

SKF Agri Hub for seeding discs

Pre-assembled units with high-performance seal help extend service life and sow greater profitability



During their intensive seeding seasons, farmers have always wanted to see earthworms in the soil – a sure sign of effective tillage. Today, farmers also want to see their seeding equipment running precisely and reliably, at the lowest possible cost per hectare.

Unfortunately, straw, stones, sap, water and more can cause seeding disc bearing seals to fail, leading to contaminant ingress, lubricant loss and premature bearing failures.

For farmers, these results can negatively impact seeding precision and their bottom line. For OEMs, premature bearing failures can drive warranty costs while damaging reputations and customer relationships. SKF Agri Hub for seeding discs can help.

These fully integrated units feature today's most reliable seal – a robust, five-lip design – plus a double-row deep groove ball bearing and a metal-sheet flange for additional strength. Cost-effective and relubrication-free, the SKF Agri Hub for seeding discs can help extend service life and cut operating costs.





Benefits

OEMs

- Cuts combined warranty, engineering, testing and assembly costs by up to 50%*
- Extends bearing unit service life
- Reduces mounting times and mistakes
- Differentiates designs
- Fast delivery worldwide

End-users

- Increases bearing unit service life by up to 40%*
- Reduces maintenance and ownership costs by up to 20%*
- Can be installed or replaced quickly and easily
- Improves profitability
- Fast delivery worldwide

Seeding machine applications

- Seeding/coulter discs
- Opener discs
- Closing discs
- Row markers



Product description

Ideal for minimum tillage or direct seeding applications, the standard SKF Agri Hub for seeding discs is available as a fully assembled hub unit with a metal-sheet flange. Sealed-for-life and relubrication-free, the unit's primary features include:

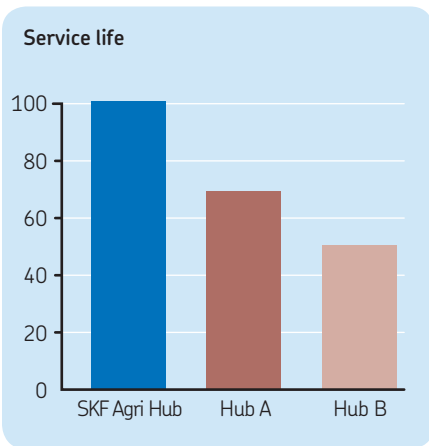
- Double-row deep groove ball bearing, enabling a higher carrying capacity compared to conventional one-row designs
- Eco-zinc coating, contributing to long service life and precision performance
- Robust five-lip seal design that helps extend bearing service life, reducing maintenance and repairs
- Design flexibility: the standard 16 mm and 20 mm hub units are available with or without flange to accommodate design requirements.

SKF Agri Hub five-lip seal testing*

Seal delivered excellent protection in a series of condition trials:

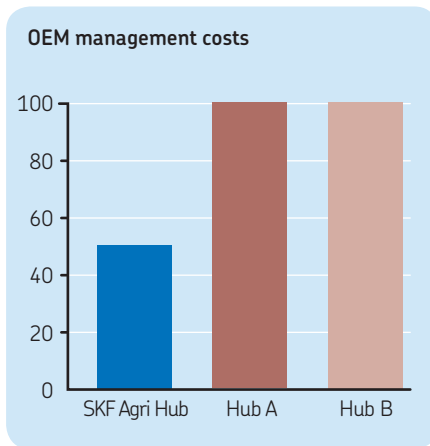
- ✓ Mud
- ✓ Dust
- ✓ Fibers, sand and stone
- ✓ High water pressure
- ✓ High air pressure
- ✓ Climatic cell

* All figures and graphs are rounded off and based on SKF testing against conventional bearings. Savings and results will vary in specific applications.



10 maintenance-free seeding seasons

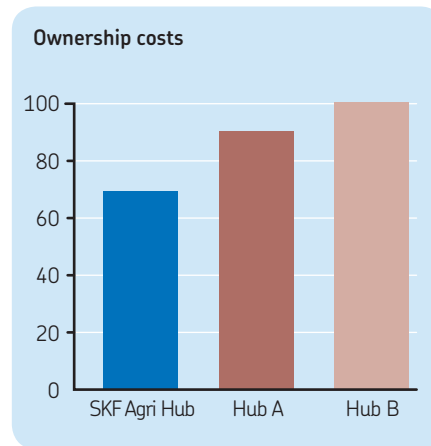
SKF testing confirms that the SKF Agri Hub for seeding discs will last up to 10 seeding seasons, or five years. Compared to conventional seal designs, the SKF five-lip seal keeps more contaminants out of the bearing, helping to reduce downtime and extend service life by up to 40%*. Farmers can stay more productive for longer, while OEMs can offer extended product reliability.



Lower management costs for OEMs

Service life and reliability increases can help OEMs reduce warranty-related issues and expenses. Fewer calls about repairs mean fewer callbacks to distributors, and fewer repair engineers in the field.

Unlike competitive designs, the SKF Agri Hub is a pre-assembled unit, allowing OEMs to reduce engineering and assembly times. By purchasing an integrated, validated unit from one supplier, OEMs can spend less time on product testing and sourcing. Combined, these reductions can save OEMs up to 50%* in total management costs.



Lower ownership costs for farmers

With longer service life and virtually no maintenance demands, the SKF Agri Hub for seeding discs can help farmers cut lifetime maintenance and ownership costs by up to 20%.

Because the unit is a single component, it is easy to install and replace. Relubrication-free, the SKF Agri Hub can help reduce grease consumption and limit the risk of soil or groundwater contamination.

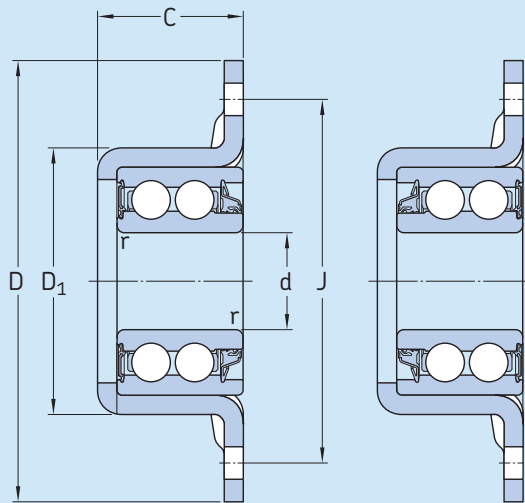


SKF Agri Solutions are growing

The SKF Agri Hub for seeding discs is just one of an expanding range of proven SKF products for applications covering the full agricultural process, from tillage to harvesting. Backed by more than 100 years of rotating machinery expertise, a global manufacturing and supply footprint, and extensive engineering consultancy services, SKF Agri Solutions are helping OEMs and end-users develop the tools they need to compete.

For more information about the full range of SKF Agri Solutions for the agriculture industry, contact your SKF representative, or visit www.skf.com/agrisolutions

Technical data



C = 30,1
D = Ø91 +/-0,5
D ₁ = Ø55
d = Ø20 or Ø16 +/-0,02
J = Ø75
N = Ø6,7 +0,25/-0

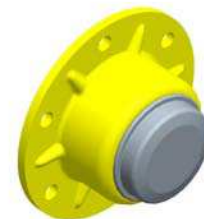
Designation	Attachment holes in outer ring	Basic load ratings		Bearing unit	Bore diameter d	5 Lip seal position
		dynamic C	static C ₀			
–	–	kN		–	mm	–
BB2-3500	–	20,8	13,2	Bearing	–	–
ADH-7545	6 x Ø 6,7 + 0,25	20,8	13,2	Flanged unit	20	on flange side
ADH-7545 B	6 x Ø 6,7 + 0,25	20,8	13,2	Flanged unit	16	on flange side
ADH-7546	6 x Ø 6,7 + 0,25	20,8	13,2	Flanged unit	20	on opposite flange side
ADH-7546 B	6 x Ø 6,7 + 0,25	20,8	13,2	Flanged unit	16	on opposite flange side

Mounting instructions:

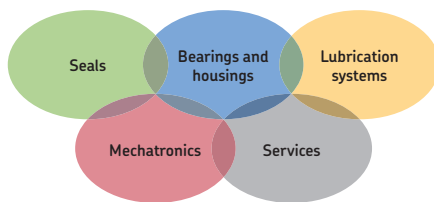
- M6 x 1 screws mounting torque 10,4 Nm
- M16 x 1,5 nut torque 110 Nm
- Self locking nut

Additional options

An optional protection cap is also available on demand. BB2-3500 is provided as a single part without flanged unit



Protection cap



The Power of Knowledge Engineering

Combining products, people, and application-specific knowledge, SKF delivers innovative solutions to equipment manufacturers and production facilities in every major industry worldwide. Having expertise in multiple competence areas supports SKF Life Cycle Management, a proven approach to improving equipment reliability, optimizing operational and energy efficiency and reducing total cost of ownership.

These competence areas include bearings and units, seals, lubrication systems, mechatronics, and a wide range of services, from 3-D computer modelling to cloud-based condition monitoring and asset management services.

SKF's global footprint provides SKF customers with uniform quality standards and worldwide product availability. Our local presence provides direct access to the experience, knowledge and ingenuity of SKF people.

© SKF is a registered trademark of the SKF Group.

© SKF Group 2013

The contents of this publication are the copyright of the publisher and may not be reproduced (even extracts) unless prior written permission is granted. Every care has been taken to ensure the accuracy of the information contained in this publication but no liability can be accepted for any loss or damage whether direct, indirect or consequential arising out of the use of the information contained herein.

PUB 46/P2 12062/1 EN · August 2013

Certain image(s) used under license from Shutterstock.com

