

SKF lubrication control centre ST-1240

for single-line, dual-line and progressive lubrication systems



SKF ST-1240-IF



SKF ST-1240-GRAPH

The SKF control centres can be used in SKF MonoFlex, SKF DuoFlex and SKF ProFlex lubrication systems for controlling two separate lubrication channels, each having independent lubrication parameters and/or lubricants.



Two channel control centre ST-1240-IF

SKF ST-1240-IF is a 2 channel lubrication control center. It supports any combination of SKF MonoFlex and SKF DuoFlex and SKF ProFlex lubrication systems.

The lubrication channels can be zones, separated by shut-off valves, or complete lubrication systems with separate pumping centers and lubricants. Configuration can be set in the field by the user interface.

Pressure switches, pressure transmitters or piston detectors can be used in both channels.

The user interface is a robust three button and three digit display.

It is compatible with:

- SKF MonoFlex = single-line system
- SKF DuoFlex = dual-line system
- SKF ProFlex = progressive system

SKF ST-1240-IF also supports

- SKF Online 1440 control software
- SKF Doser monitors
- Automatic pump change (Dualset)
- Grease spraying with air monitoring



Description	Value
Model	SKF ST-1240-IF
Interfaces	IF-105 user interface RS-422 Modbus port Optional SMS control
Operation temperature	-10 to +50 °C
Operating voltage range	93 to 132 V AC, 186 to 264 V AC
Operating voltage frequency	47 to 63 Hz
Operating current	5,4 A/115 V AC, 2,2 A/230 V AC
Fuse	Automatic fuse, 6 A
Cable connections	Screw connections for 2,5 mm ² wires
Casing	380 x 300 x 210 mm (w x h x d), painted RAL 7035
Protection class	IP65
Weight	10 kg
EMC standards	EN61000-6-4, EN61000-6-2
Electrical safety standards	EN61010-1 Power supply according to EN60950

Two channel control centre SKF ST-1240-GRAPH

SKF ST-1240-GRAPH is a 2 channel lubrication control centre. It supports any combination of SKF MonoFlex and SKF DuoFlex and SKF ProFlex lubrication systems.

The lubrication channels can be zones, separated by shut-off valves, or complete lubrication systems with separate pumping centres and lubricants. Configuration can be set in the field by the user interface.

Pressure switches, pressure transmitters or piston detectors can be used in both channels.

The user interface is an alphanumeric touch screen display.

It is compatible with:

- SKF MonoFlex = single-line system
- SKF DuoFlex = dual-line system
- SKF ProFlex = progressive system
- Special applications

SKF ST-1240-GRAPH also supports

- SKF Online 1440 control software
- SKF Doser monitors
- Automatic pump change (Dualset)
- Grease spraying with air monitoring



Description	Value
Model	SKF ST-1240-GRAPH
Interfaces	Alphanumeric touch screen display RS-422 Modbus port
Operation temperature	0 to +50 °C
Operating voltage range	93 to 132 V AC, 186 to 264 V AC
Operating voltage frequency	47 to 63 Hz
Operating current	5,4 A/115 V AC, 2,2 A/230 V AC
Fuse	Automatic fuse, 6 A
Cable connections	Screw connections for 2,5 mm ² wires
Casing	380 x 300 x 210 mm (w x h x d), painted RAL 7035
Protection class	IP65
Weight	10 kg
EMC standards	EN 61000-6-4, EN 61000-6-2 IEC 61000-4-2, level 3, control panel IEC 61000-4-3, 10 V/m, control panel IEC 61000-4-4, level 3, control panel
Electrical safety standards	EN 61010-1 Power supply according to EN60950 IEC 61131-2, control panel

NOTE!

For all systems described in this brochure, see important product usage information on the back cover.

Four channel control center ST-1240-GRAPH-4

SKF ST-1240-GRAPH-4 is a 4 channel lubrication control center. It supports any combination of SKF MonoFlex and SKF ProFlex lubrication systems.

The lubrication channels can be zones, separated by shut-off valves, or complete lubrication systems with two separate pumping centers and lubricants. Configuration can be set in the field by the user interface.

Pressure switches, pressure transmitters or piston detectors can be used in all channels.

The user interface is an alphanumeric touch screen display.

SKF ST-1240-GRAPH-4 also supports grease spraying with air monitoring in two of the four channels.

It is compatible with:

- SKF MonoFlex = single-line system
- SKF ProFlex = progressive system

Description	Value
Model	SKF ST-1240-GRAPH-4
Interfaces	Alphanumeric touch screen display RS-422 Modbus port
Operation temperature	0 to +50 °C
Operating voltage range	93 to 132 VAC, 186 to 264 VAC
Operating voltage frequency	47 to 63 Hz
Operating current	5,4 A/115 VAC, 2,2 A/230 VAC
Fuse	Automatic fuse, 6 A
Cable connections	Screw connections for 2,5 mm ² wires
Casing	380 x 300 x 210 mm (w x h x d), painted RAL 7035
Protection class	IP65
Weight	10 kg
EMC standards	EN 61000-6-4, EN 61000-6-2 IEC 61000-4-2, level 3, control panel IEC 61000-4-3, 10 V/m, control panel IEC 61000-4-4, level 3, control panel EN 61010-1
Electrical safety standards	Power supply according to EN60950 IEC 61131-2, control panel

SKF Online 1440

SKF Online 1440 is a windows software designed for controlling, monitoring and analysing lubrication systems. The maximum number of control centers that can be connected to the system is 20.

The application can be run from PCs which are connected into the control center by direct cable or by Ethernet. The application has two main functions:

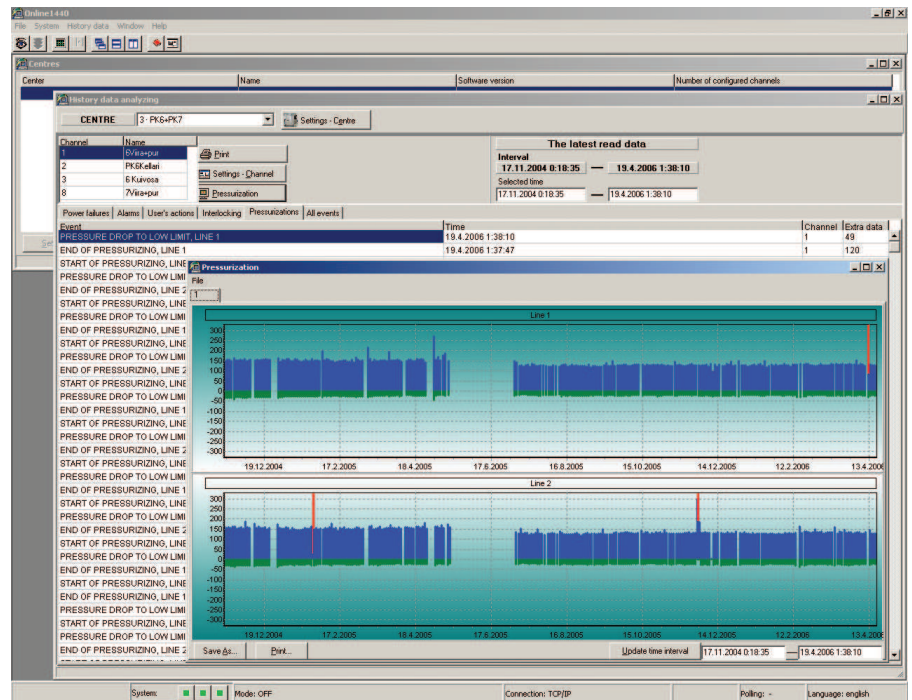
- 1 System control – online
- 2 Analysing the lubrication history data.

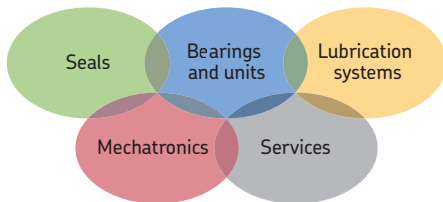
Online - function enables the user to monitor system operation online, starting extra lubrication cycles, resetting alarms and setting the parameters for the centre and the lubrication channels.

History data - function enables the user to read and analyse lubrication history, lubrication trends, alarms, user actions etc.

The system settings can be saved into a file and restored as parameter values for the system, if necessary.

Models ST-1240-IF and ST-1240 - GRAPH are compatible with SKF Online 1440 Software.





The Power of Knowledge Engineering

Drawing on five areas of competence and application-specific expertise amassed over more than 100 years, SKF brings innovative solutions to OEMs and production facilities in every major industry worldwide. These five competence areas include bearings and units, seals, lubrication systems, mechatronics (combining mechanics and electronics into intelligent systems), and a wide range of services, from 3-D computer modelling to advanced condition monitoring and reliability and asset management systems. A global presence provides SKF customers uniform quality standards and worldwide product availability.

SKF lubrication systems

e-mail: skf-lube@skf.com

Important information on product usage

All products from SKF may be used only for their intended purpose as described in this brochure and in any instructions. If operating instructions are supplied with the products, they must be read and followed.

Not all lubricants are suitable for use in centralized lubrication systems. SKF does offer an inspection service to test customer supplied lubricant to determine if it can be used in a centralized system. SKF lubrication systems or their components are not approved for use with gases, liquefied gases, pressurized gases in solution and fluids with a vapor pressure exceeding normal atmospheric pressure (1 013 mbar) by more than 0,5 bar at their maximum permissible temperature.

Hazardous materials of any kind, especially the materials classified as hazardous by European Community Directive EC 67/548/EEC, Article 2, Par. 2, may only be used to fill SKF centralized lubrication systems and components and delivered and/or distributed with the same after consulting with and receiving written approval from SKF.

© SKF is a registered trademark of the SKF Group.

© SKF Group 2011

The contents of this publication are the copyright of the publisher and may not be reproduced (even extracts) unless prior written permission is granted. Every care has been taken to ensure the accuracy of the information contained in this publication but no liability can be accepted for any loss or damage whether direct, indirect or consequential arising out of the use of the information contained herein.

PUB LS/P8 12404 EN · October 2011

Printed in Sweden on environmentally friendly paper.

