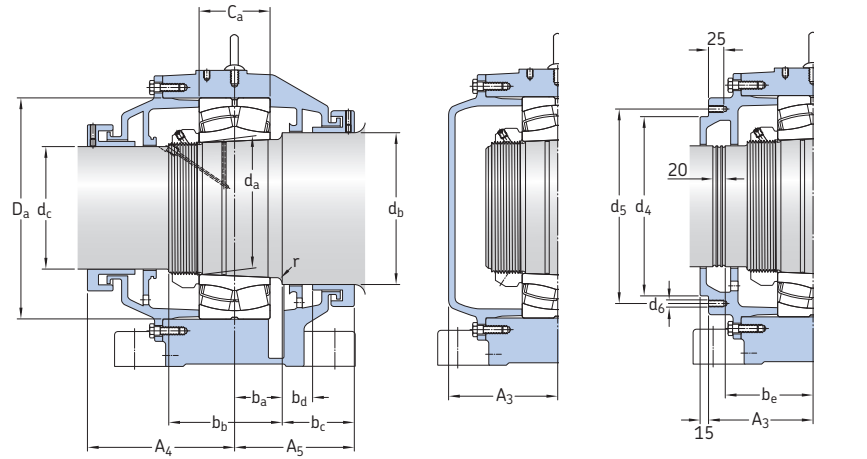


### 13.4 SBPN drying cylinder housings, with inch connection threads – short, wide base

d 180 – 320 mm  
7.087 – 12.598 in.



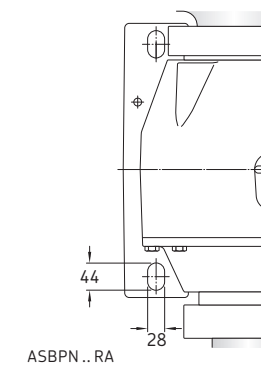
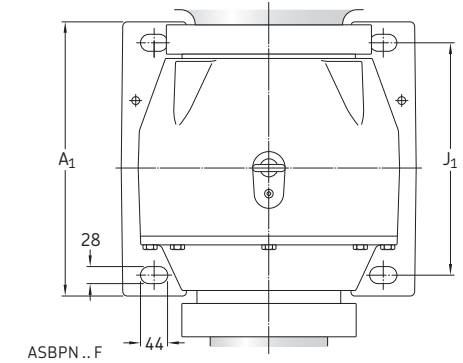
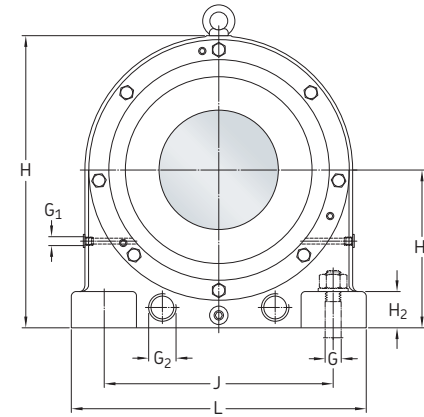
Housing for through shaft  
(designation suffix B)

Housing for shaft end  
(designation suffix A)

Housing for steam joint  
connection  
(designation suffix B42)

Shaft diameter $d_a$	Housing Designation	Appropriate parts Bearing <sup>1)</sup> Lock nut Locking clip	Dimensions Housing													Mass Housing kg
			$A_1$	$A_3$	$A_4$	$A_5$	$C_a$	$D_a$	H	$H_1$	$H_2$	J	$J_1$	L		
mm/in.	–	–	mm													
180 7.087	<b>ASBPN 3136 FN9</b> <b>ASBPN 3136 RAN9</b>	23136 CCK/W33 N036 W036 C 3136 K	350	155	230	195	96	300	400	220	50	320	280	400		
220 8.661	<b>ASBPN 3144 FN9</b> <b>ASBPN 3144 RAN9</b>	23144 CCK/W33 N044 W044 C 3144 K	410	175	255	200	120	370	490	265	60	380	340	490		
260 10.236	<b>ASBPN 3152 FN9</b> <b>ASBPN 3152 RAN9</b>	23152 CCK/W33 N052 PL 52 C 3152 K	445	200	280	225	144	440	570	310	75	470	375	580		
300 11.811	<b>ASBPN 3160 FN9</b> <b>ASBPN 3160 RAN9</b>	23160 CCK/W33 N060 PL 60 C 3160 K	480	215	290	235	160	500	630	335	85	560	410	670		
320 12.598	<b>ASBPN 3164 FN9</b> <b>ASBPN 3164 RAN9</b>	23164 CCK/W33 N064 PL 64 C 3164 KM	500	225	300	255	176	540	680	360	85	580	430	710		

<sup>1)</sup> 231(00) – spherical roller bearing, C... – CARB toroidal roller bearing. Only typical bearings are listed. Other bearing variants can also fit the housing.



Shaft diameter $d_a$	Dimensions Housing			Shaft										Mass Housing kg			
	G	$G_1$	$G_2$	$b_a$	$b_b$	$b_c$ min.	$b_d$	$b_e$	$d_b$	$d_c$	$d_d$	Threads/ inch	$d_4$		$d_5$	$d_6$	r
mm/in.	–	–	–	mm													
mm/in.	–	–	–	in.													
180 7.087	1 UNC	NPTF 1/2	NPTF 1.1/4	65	150	130	55	128	200	160	7.063	8	225	250	M12	5	<sup>1)</sup>
220 8.661	1 UNC	NPTF 1/2	NPTF 1.1/4	75	190	125	50	148	250	200	8.625	8	305	330	M12	8	203
260 10.236	1 UNC	NPTF 1/2	NPTF 1.1/2	95	225	130	55	173	300	240	10.189	6	355	380	M12	8	<sup>1)</sup>
300 11.811	1 UNC	NPTF 1/2	NPTF 1.1/2	105	250	130	55	188	340	280	11.781	6	435	460	M12	8	<sup>1)</sup>
320 12.598	1 UNC	NPTF 1/2	NPTF 1.1/2	115	270	140	65	198	360	300	12.559	6	455	480	M12	8	<sup>1)</sup>

<sup>1)</sup> Contact SKF for missing values.