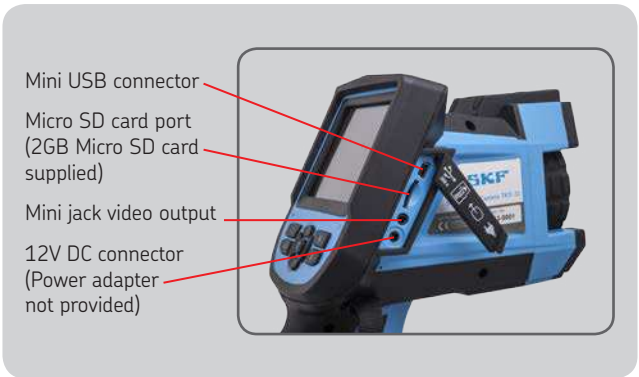


SKF Thermal Camera TKTI 21 & 31

Quick Start guide

1. Camera Description



2. Charging the battery

Before first use, it is recommended to fully charge the two batteries.

The battery door is located in the bottom of the handle. Open the battery compartment as shown below.



Battery door

Remove the battery and place it in the charger provided. To fully charge the battery will take approximately 3 hours. Insert the battery back into the camera taking care the connectors are in the same position as shown below.



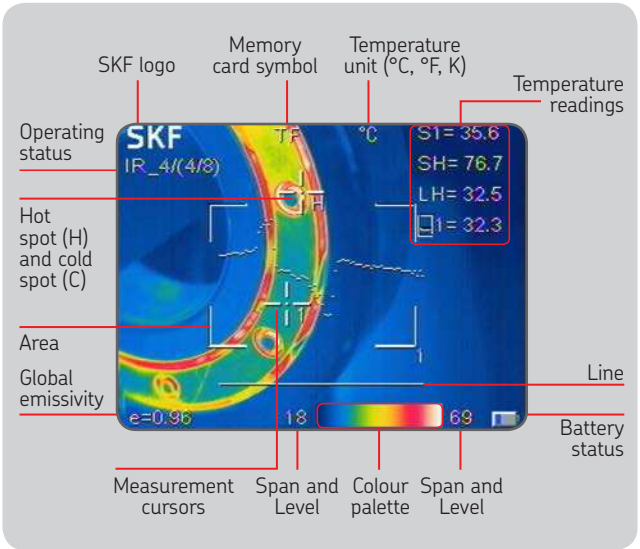
Battery insertion

Batteries care

- Batteries should be stored at ambient temperature.
- Lithium batteries will self-discharge during storage, they should be fully charged before storage.
- The batteries should be fully charged at least once every 3 months.

3. Starting the camera

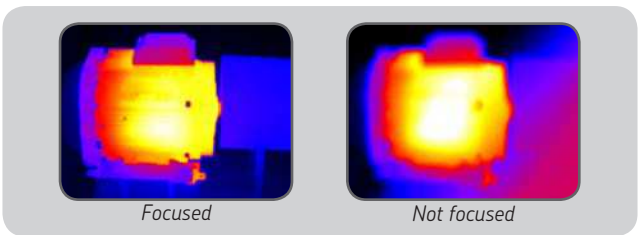
- Remove the lens cap
- Switch the unit on by pressing the **On/Off button** for at least 3 seconds until the display switches on.
- A thermal image will appear on the screen
- The clicking noise is due to the frequent calibration of the infrared detector.



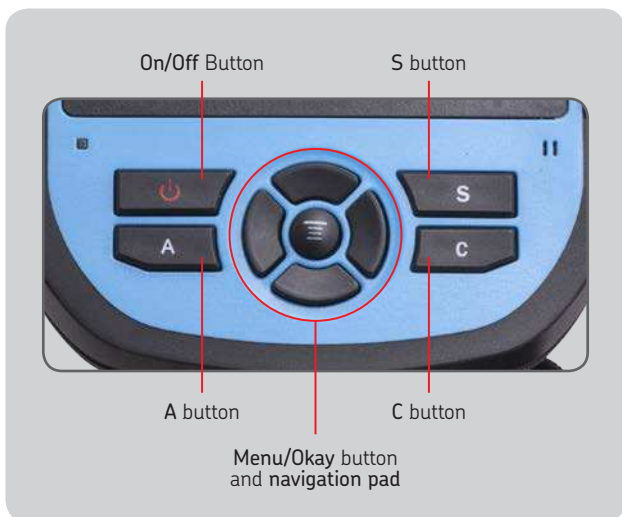
Screen elements

Focus

Adjust the focus by gently rotating the lens in front of the camera clockwise and anti-clockwise.



4. Operating the camera



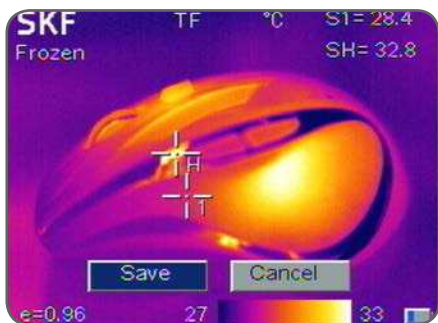
- Operate the laser with the **trigger**
- Press the **A** button successively to change the cursors settings, adjust the Span and Level, change the colour palette
- Select the Span and Level by highlighting the span/level temperatures with the **A** button. Use the navigation pad to adjust the Span or Level.
- Switch between the Infrared image and the visual image with the **C** button. The **C** button is also used to quit a menu
- Save an image with the **S** button
- Access the main menu by pressing the **Menu/Okay** button
- Use the **navigation pad** to browse through menus and options

Infrared settings

- Set the emissivity of the object of interest and the reflected temperature (TReflect) via **Setup -> Adjustment**.

An **emissivity table** with the most common materials is provided. The **reflected temperature** is usually set to the average room temperature.

5. Saving images



Saving an infrared image

Make sure the image is focused correctly

- Press the S button
- By default the infrared and visual images are saved together
- Validate Save to save the image or Cancel to go back to live image

6. Viewing saved images

- To view saved images, access the menu File -> Open
- The image number will appear on the top left part of the screen
- Navigate to the desired image
- The open image can be analysed on the screen
- Press the C button to return to live mode

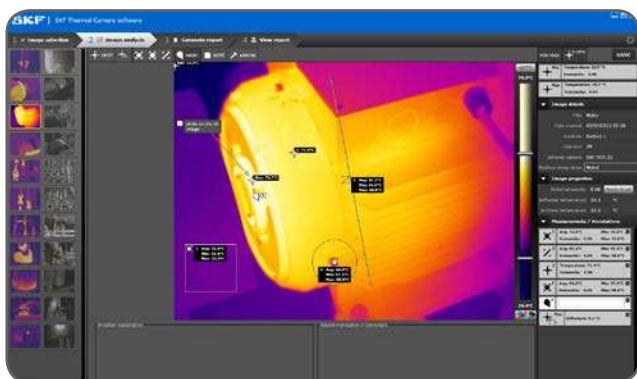
7. Downloading saved images

- Connect the camera to your PC by plugging the USB cable (supplied) to the mini USB port
- The memory card appears as a removable disc in the file browser of your computer
- Copy the images from the memory card to your hard disk
- Analysis and report writing software is included on the CD-ROM

8. Image analysis and Report generation Software

Use the SKF TKTI Thermal Camera Software to:

- Load and analyse the images
- Create comprehensive pdf and MS Word reports



SKF Thermal Camera Software

SKF Thermal Camera Software updates are available for free on www.SKF.com.

More options and possibilities are explained in full detail in the instructions for use included on the CD-ROM.



WARNING
LASER RADIATION
DO NOT STARE INTO BEAM
CLASS 2 LASER PRODUCT
P ≤ 1mW λ = 635nm



SKF Maintenance Products

® SKF is a registered trademark of the SKF Group.
© SKF Group 2013/09

www.mapro.skf.com • www.skf.com/mount • MP5416EN

The contents of this publication are the copyright of the publisher and may not be reproduced (even extracts) unless prior written permission is granted. Every care has been taken to ensure the accuracy of the information contained in this publication but no liability can be accepted for any loss or damage whether direct, indirect or consequential arising out of use of the information contained herein.