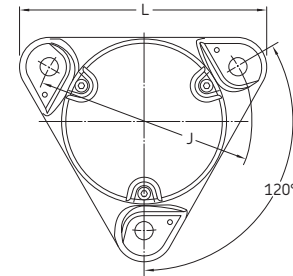
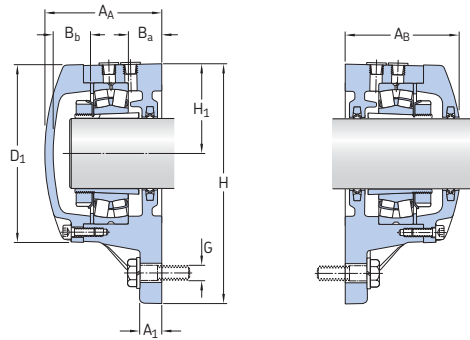


## 11.1 FNL flanged housings for bearings on adapter sleeves

$d_a$  20 – 40 mm



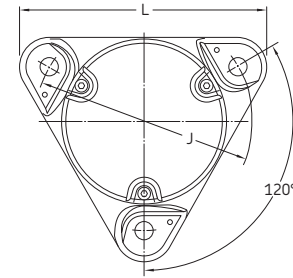
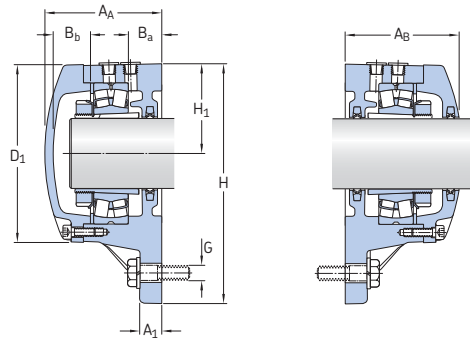
Shaft diameter $d_a$	Housing for shaft end	for through shaft	Appropriate parts			Contact seal
			Bearing <sup>1)</sup>	Adapter sleeve <sup>2)</sup>	Locating ring or spacing washer <sup>3)</sup>	
mm	–	–	–	–	–	–
20	FNL 505 A	FNL 505 B	1205 EKTN9 2205 EKTN9 22205 EK C 2205 KTN9	H 205 H 305 H 305 H 305 E	1 FRB 5/52 1 ZW 42 × 52 1 ZW 42 × 52 1 ZW 42 × 52	TFL 505
25	FNL 506 A	FNL 506 B	1206 EKTN9 2206 EKTN9 22206 EK C 2206 KTN9	H 206 H 306 H 306 H 306 E	1 FRB 6/62 1 ZW 50 × 62 1 ZW 50 × 62 1 FRB 2/62	TFL 506
30	FNL 507 A	FNL 507 B	1207 EKTN9 2207 EKTN9 22207 EK C 2207 KTN9	H 207 H 307 H 307 H 307 E	1 FRB 8/72 1 ZW 65 × 72 1 ZW 65 × 72 1 ZW 65 × 72	TFL 507
35	FNL 508 A	FNL 508 B	1208 EKTN9 2208 EKTN9 22208 EK C 2208 KTN9	H 208 H 308 H 308 H 308 E	1 FRB 7/80 1 ZW 70 × 80 1 ZW 70 × 80 1 ZW 70 × 80	TFL 508
40	FNL 509 A	FNL 509 B	1209 EKTN9 2209 EKTN9 22209 EK C 2209 KTN9	H 209 H 309 H 309 H 309 E	1 FRB 6/85 1 ZW 75 × 85 1 ZW 75 × 85 1 ZW 75 × 85	TFL 509

Shaft diameter $d_a$	Dimensions Housing										Mass Housing	
	$A_A$	$A_B$	$A_1$	$B_a$	$B_b$	$D_1$	H	$H_1$	J	L		G
mm	mm	mm	mm	mm	mm	mm	mm	mm	mm	mm	mm	kg
20	57	56,5	10	15	15	74	100	38	96	110	10	1,10
25	60,5	60	12	16	15	86	117	44	116	130	10	1,60
30	64,5	64	12	16	17	95	130	48,5	130	145	12	2,00
35	67	66	12	17	18	105	143	54	140	160	12	2,40
40	72	70,5	12	19	19	113	160	60	160	179	12	3,20

<sup>1)</sup> Only the basic bearing designation is listed. Other bearing variants can also fit the housing.  
12(00), 22(00) – self-aligning ball bearing, 222(00) – spherical roller bearing, C... – CARB toroidal roller bearing  
<sup>2)</sup> The adapter sleeve fits the bearing in the same row only.  
<sup>3)</sup> The locating ring or spacing washer fits the bearing in the same row only.

## 11.1 FNL flanged housings for bearings on adapter sleeves

$d_a$  45 – 60 mm



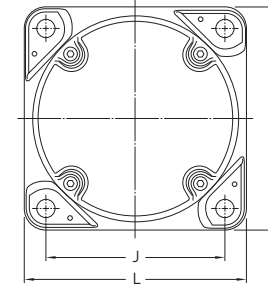
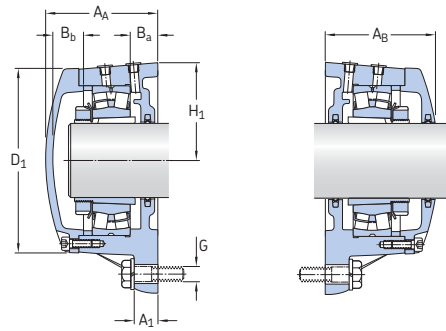
Shaft diameter $d_a$	Housing for shaft end	for through shaft	Appropriate parts			
			Bearing <sup>1)</sup>	Adapter sleeve <sup>2)</sup>	Locating ring or spacing washer <sup>3)</sup>	Contact seal
mm	–	–	–	–	–	–
45	FNL 510 A	FNL 510 B	1210 EKTN9 2210 EKTN9 22210 EK C 2210 KTN9	H 210 H 310 H 310 H 310 E	1 FRB 5/90 1 ZW 80 × 90 1 ZW 80 × 90 1 ZW 80 × 90	TFL 510
50	FNL 511 A	FNL 511 B	1211 EKTN9 2211 EKTN9 22211 EK C 2211 KTN9	H 211 H 311 H 311 H 311 E	1 FRB 6/100 1 ZW 85 × 100 1 ZW 85 × 100 1 ZW 85 × 100	TFL 511
55	FNL 512 A	FNL 512 B	1212 EKTN9 2212 EKTN9 22212 EK C 2212 KTN9	H 212 H 312 H 312 H 312 E	1 FRB 8/110 1 ZW 90 × 110 1 ZW 90 × 110 1 FRB 2/110	TFL 512
60	FNL 513 A	FNL 513 B	1213 EKTN9 2213 EKTN9 22213 EK C 2213 KTN9	H 213 H 313 H 313 H 313 E	1 FRB 10/120 1 FRB 2/120 1 FRB 2/120 1 FRB 2/120	TFL 513

Shaft diameter $d_a$	Dimensions Housing											Mass Housing
	$A_A$	$A_B$	$A_1$	$B_a$	$B_b$	$D_1$	H	$H_1$	J	L	G	
mm	mm	mm	mm	mm	mm	mm	mm	mm	mm	mm	mm	kg
45	77	75	15	22	21	118	160	60	160	179	12	3,50
50	84	82	15	24	23	127	172,5	65	170	192	12	4,30
55	85	83	15	23	22	142	189	72	180	210	12	5,20
60	88	86	15	22	24	152	203	78	190	225	12	6,30

<sup>1)</sup> Only the basic bearing designation is listed. Other bearing variants can also fit the housing.  
12(00), 22(00) – self-aligning ball bearing, 222(00) – spherical roller bearing, C... – CARB toroidal roller bearing  
<sup>2)</sup> The adapter sleeve fits the bearing in the same row only.  
<sup>3)</sup> The locating ring or spacing washer fits the bearing in the same row only.

## 11.1 FNL flanged housings for bearings on adapter sleeves

$d_a$  65 – 100 mm



Shaft diameter $d_a$	Housing for shaft end	for through shaft	Appropriate parts			Contact seal
			Bearing <sup>1)</sup>	Adapter sleeve <sup>2)</sup>	Locating ring or spacing washer <sup>3)</sup>	
mm	–	–	–	–	–	–
65	FNL 515 A	FNL 515 B	1215 K 2215 EKTN9 22215 EK C 2215 K	H 215 H 315 H 315 H 315 E	2 FRB 8/130 1 FRB 10/130 1 FRB 10/130 1 FRB 10/130	TFL 515
70	FNL 516 A	FNL 516 B	1216 K 2216 EKTN9 22216 EK C 2216 K	H 216 H 316 H 316 H 316 E	2 FRB 8,5/140 1 FRB 10/140 1 FRB 10/140 1 FRB 10/140	TFL 516
75	FNL 517 A	FNL 517 B	1217 K 2217 K 22217 EK C 2217 K	H 217 H 317 H 317 H 317 E	2 FRB 9/150 1 FRB 10/150 1 FRB 10/150 1 FRB 10/150	TFL 517
80	FNL 518 A	FNL 518 B	1218 K 2218 K 22218 EK C 2218 K	H 218 H 318 H 318 H 318 E	2 FRB 10/160 1 FRB 10/160 1 FRB 10/160 1 FRB 10/160	TFL 518
90	FNL 520 A	FNL 520 B	1220 K 2220 KM 22220 EK C 2220 K	H 220 H 320 H 320 H 320 E	1 FRB 10/180 <sup>4)</sup> 1 FRB 12/180 <sup>4)</sup> 1 FRB 10/180 1 FRB 10/180 1 FRB 10/180	TFL 520
100	FNL 522 A	FNL 522 B	1222 K 2222 KM 22222 EK C 2222 K	H 222 H 322 H 322 H 322 E	2 FRB 12,5/200 1 FRB 10/200 1 FRB 10/200 1 FRB 10/200	TFL 522

Shaft diameter $d_a$	Dimensions Housing											Mass Housing
	$A_A$	$A_B$	$A_1$	$B_a$	$B_b$	$D_1$	H	$H_1$	J	L	G	
mm	mm											kg
65	106	104	25	30	24	168	190	95	152	190	16	10,0
70	113	110	25	31	27	175	196	98	152	196	16	10,5
75	117,5	115	25	31	27	188	210	105	170	210	16	12,5
80	121	118	25	30	28	196	210	105	170	210	16	12,0
90	130	127	30	30	31	224	250	125	198	250	20	19,0
100	140	137	30	30	33	244	270	135	219	270	20	23,5

<sup>1)</sup> Only the basic bearing designation is listed. Other bearing variants can also fit the housing.  
12(00), 22(00) – self-aligning ball bearing, 222(00) – spherical roller bearing, C... – CARB toroidal roller bearing  
<sup>2)</sup> The adapter sleeve fits the bearing in the same row only.  
<sup>3)</sup> The locating ring or spacing washer fits the bearing in the same row only.  
<sup>4)</sup> One FRB 10/180 and one FRB 12/180 at each side of the bearing.