



FAQ:

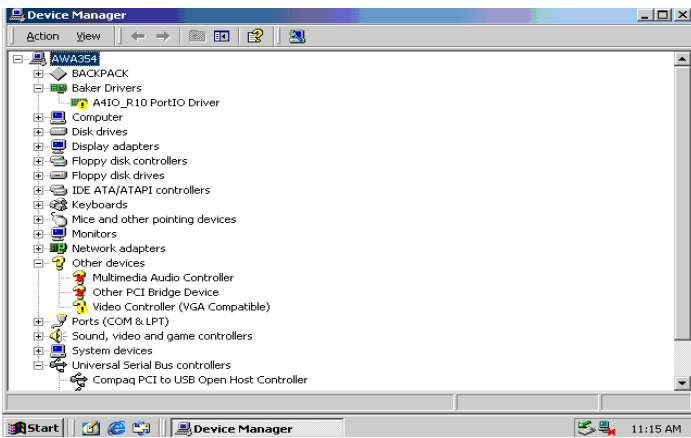
AWA IV tester will not perform any baker test, yet the computer operates flawlessly. All data can be retrieved and or reviewed. If the Baker AWA diagnostics are initialized, no I/O functions will enable.

Answer:

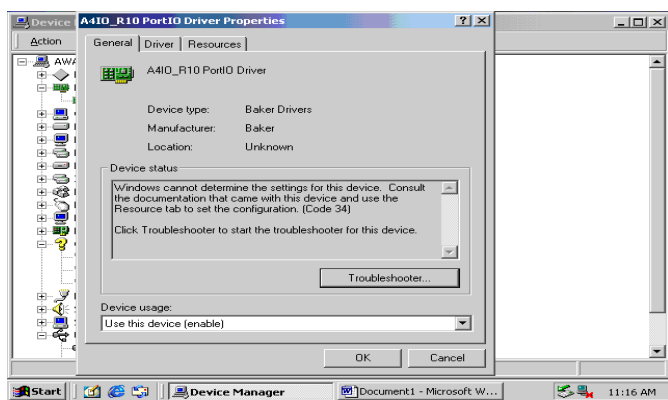
It is possible that the A4IO_R10 PortIO Driver may be corrupted. In rare circumstances the driver has become disconnected from the Windows 2000 operating system. A replacement driver is present in the factory new AWA testers in the My documents\awa folder. This could happen because of computer crashes, or improper computer shutdown.

The best method to verify if the AWA has lost or corrupted it's driver is to look in the "Device manager" The screen captures below show a couple of problem devices: The A4IO_R10 PortIO Driver, and the "Video Controller (VGA Compatible)

(Fig 1)



(Fig 2)



If the problems are seen as illustrated in Fig 1 and Fig 2 then the proper method to reload the drivers is as follows:

Windows 2000 Service pack 3 and 4:

Start – Settings – Control Panel – System – Hardware – Hardware Wizard – Add/Troubleshoot a device – Add a new device – No, I want to select the hardware from a list – Other devices – Have disk – Browse – My Documents\awa – A4_R10_W2000.inf
The wizard will walk you through the rest of the way.

