



## XE “ Recommended Testing Sequence”

Version 3 of the MTA for Windows software uses a different database structure than prior versions. The test results data are arranged differently, the database keys are different, and several tables have been combined or added, in addition to many other improvements. One of the major changes is that the surge data is no longer stored in a separate set of files in a “Srg” folder – all surge waveform data is now stored in the database.

**Note:** Care needs to be taken when upgrading to this new version of the database. After installation of the new software, the old databases on your computer will still be present. It is left to the user to insure a smooth transition to the new database and software. Here are a few suggestions for making the change to the Version 3+ database:

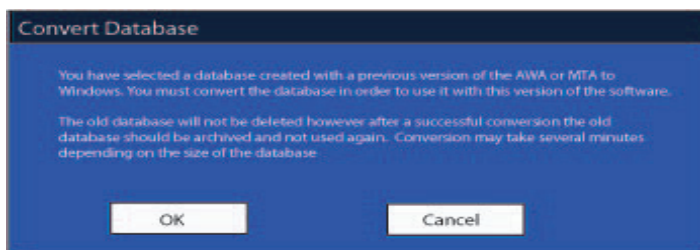
- 1) Make a backup copy of all old databases. Use WinZip, an older stand alone version of the Data Transfer XE “Data Transfer” archive feature, or simply use Windows Explorer to make a copy.
- 2) Install the MTA for Windows 3+ software.
- 3) Convert all of the old databases to the new version by opening each of the old databases with the MTA version 3+ software, as described later.
- 4) Verify data has been correctly converted in the new databases. The old databases will still be on the machine.

Once confident the data is correct, remove the old databases from the computer, to avoid confusion as to what version to use. The old data is typically stored in the C:\MTADData\YourDatabaseName\. To delete the old databases, after conversion, delete each database’s individual folder. The version 3.0+ database is stored in the C:\MTADData\ and not in individual folders. For example: old database is called MyBakerDb.mdb, is located in C:\MTADData\MyBakerDb\MyBakerDb.mdb. It will also have a srg folder. After conversion it will be located in C:\MTADData\MyBakerDb\_Rev3.mdb with no srg folder if all defaults are taken. Note: If defaults are not used, attention need to be paid to what the names are and where the databases were saved.

If data resides on a network or desktop(s), make sure that all databases, not just those stored on the computer, have been upgraded. This will insure the old databases do not get advertently used for new testing.

Converting the Data XE “Recommended Testing Sequence” Version 3+ software stores database files in a different place than prior versions: Database files are now in C:\MTADData without an additional database folder. Older versions stored database files in subfolders within C:\MTADData. Of course these locations are the default locations programmed into the software; databases can be stored anywhere on the machine’s disk or even a network.

When using the Version 3+ software for the first time, the databases from previous versions will have to be converted. The conversion process happens automatically when the application opens an older database. In order to open an older database, the File XE “File” -Open dialog will have to be used to pick the old database from the C:\MTADData\Your Database Name\ folder where they are stored.



The software will automatically identify the database as an old database and presents the operator with the following message indicating the database will be converted.

The Version 3+ software will then present a Convert Database XE “Convert Database” Into save dialog box with a new database name filled in: the new name is the old one with a \_Rev3 appended to it. The database name can be changed to whatever is desired, however, it is recommended that a consistent naming convention and an unambiguous location be used.

Once a File XE “File” name is entered press the Save button. The conversion will begin immediately. All Test ID XE “Test ID” ’s, Motor ID XE “Motor ID” ’s and Test result data will be converted. When the conversion is concluded the application will open the converted database.

