



VKBA 7573

Technical Bulletin - February 2012

VKBA 7573



Chevrolet Kalos and Aveo, Kalos and Aveo Variant



Technical Information: VKBA 7573 (REAR AXLE)



When servicing the Chevrolet/Daewoo Kalos and Chevrolet Aveo Wheel Bearing, it is not always necessary to change the whole Wheel Bearing. Instead, the hub can be reused by replacing the bearing only. However, it is important to mount the bearing into the hub in the correct manner, by pushing on the outer race of the bearing, to prevent damages to the internal components and raceway of the bearing. The kit VKBA 7573 comes with a HUB 1 bearing, a circlip and a nut, and is applicable for both the ABS and non-ABS version:



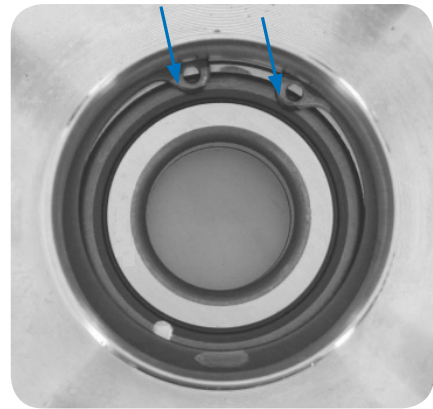
CAR MAKER	MODEL	ENGINE	OE NUMBER
Daewoo	Kalos	1.2 / 1.4 / 1.5	96471773 / 96471774 96471775 / 96471776
Chevrolet	Kalos	1.2 / 1.4	
Chevrolet	Aveo	1.2 / 1.4 / 1.5 / 1.6	



Fitting instructions for VKBA 7573

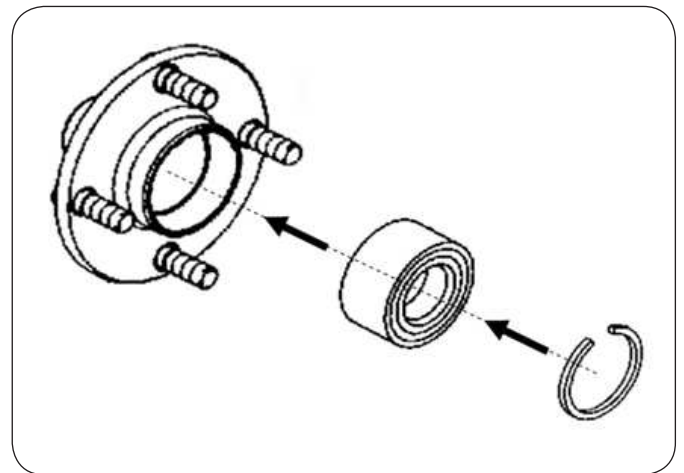
1. Remove the circlip and push out the bearing from the hub.

Check the hub, internally and externally. If the hub is damaged or in poor condition, a complete unit will need to be ordered and this kit will not be sufficient.

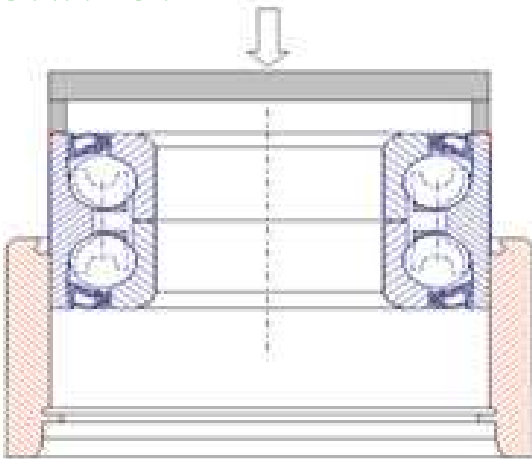


2. Mount the new bearing into the hub followed by the circlip as per normal HUB 1 assembly technique, including application of the LGAF-3 Antifret paste.

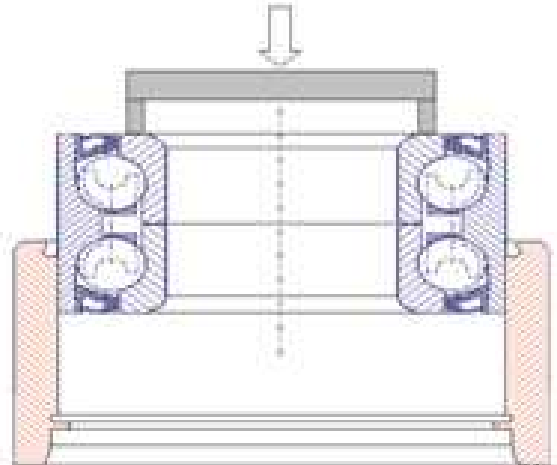
This step should be handled with caution while pressing the bearing into the hub as wrong application of forces on the bearing would result in bearing damage.



CORRECT



NOT CORRECT



3. Mount to axle and torque new axle nut.

© SKF is a registered trademark of the SKF Group.

© SKF Group 2012

The contents of this publication are the copyright of the publisher and may not be reproduced (even extracts) unless written permission is granted. Every care has been taken to ensure the accuracy of the information contained in this publication but no liability can be accepted for any loss or damage whether direct, indirect or consequential arising out of the use of the information contained herein.

