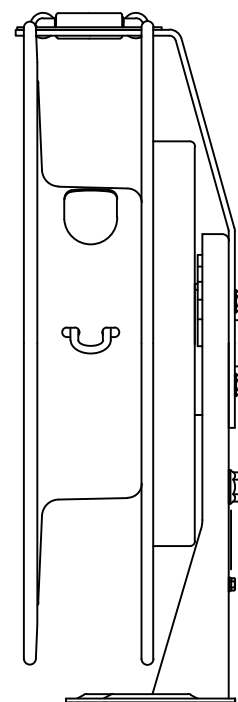
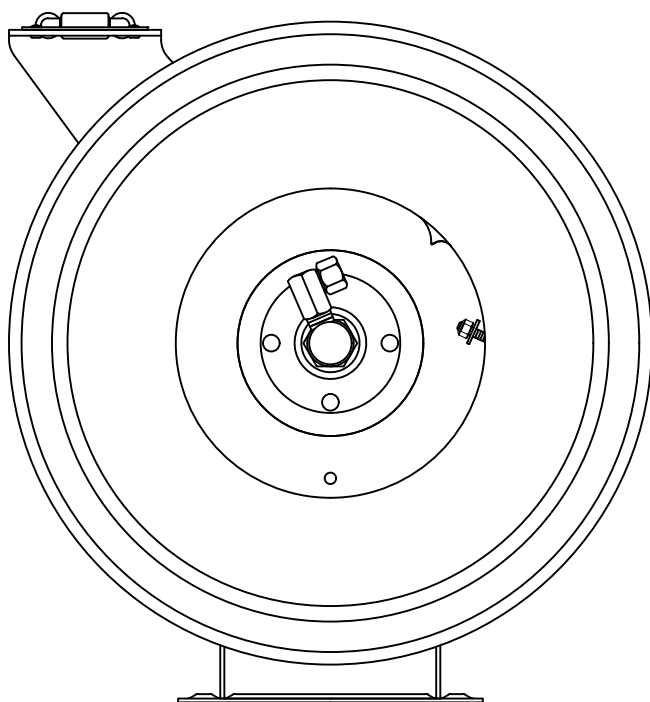


Heavy-duty hose reels

Models 7134-A, 7135-A, 7136-A



Date of issue	May 2023
Form number	671067
Version	2

Contents

Safety *	3
Explanation of signal words for safety	3
Description	4
Delivery hoses	4
Dimensions	4
Reel models 7134-A, 7135-A, 7136-A*	4
Service hints	5
Overhaul	6
Disassembly	6
Sheave and power spring assembly ..	6
Base and hose guide assembly	6
Pawl assembly	6
Low-pressure swivel assembly	6
Medium and high pressure swivel assemblies	6
Clean and inspect	6
Assembly	7
Pawl assembly	7
Base and hose guide assembly	7
Sheave and power spring assembly ..	7
Swivel assemblies	7
Components lubricated in clean oil ..	7
Components lubricated in lithium grease	7
Bench test	8
Installation	8
On bench	8
Heavy-duty hose reels - section view ..	8
Setting spring tension	9
Reel operation	9
Latch lockout	9
Suspension bracket for ceilings greater than 20 ft (6.1 m) - typical	10
Reel packages	11
Reel packages	11
Troubleshooting chart	11
Heavy-duty hose reels - exploded view	12
Parts list for model 7134- (all colors) ...	13
Parts list for model 7135- (all colors) ...	14
Hose guide assembly kit item (all models)	14
Parts list for model 7136- (all colors) ...	15

* Indicates change.

Safety *

The assembly must be installed, maintained and repaired exclusively by persons familiar with the instructions.

Always disconnect power source (electricity, air or hydraulic) from the equipment when it is not being used.

This equipment generates high pressure. Extreme caution should be used when operating this equipment as material leaks from loose or ruptured components can inject fluid through the skin and into the body. If any fluid appears to penetrate the skin, seek attention from a doctor immediately. Do not treat injury as a simple cut. Tell attending doctor exactly what type of fluid was injected.

Any other use not in accordance with instructions will result in loss of claim for warranty or liability.

- Do not misuse, over-pressurize, modify parts, use incompatible chemicals, fluids, or use worn and/or damaged parts.
- Do not exceed the stated maximum working pressure of the equipment or of the lowest rated component in your system.
- Always read and follow the manufacturer's recommendations regarding fluid compatibility, and the use of protective clothing and equipment.
- Failure to comply may result in personal injury and/or damage to equipment.

Explanation of signal words for safety

NOTE

Emphasizes useful hints and recommendations as well as information to prevent property damage and ensure efficient trouble-free operation.

CAUTION

Indicates a dangerous situation that can lead to light personal injury if precautionary measures are ignored.

WARNING

Indicates a dangerous situation that could lead to death or serious injury if precautionary measures are ignored.

DANGER

Indicates a dangerous situation that will lead to death or serious injury if precautionary measures are ignored.

WARNING

Do not operate equipment without reading and fully understanding safety warnings and instructions.

Failure to follow warnings and instructions may result in serious injury.



CAUTION

Do not operate equipment without wearing personal protective gear.

Wear eye protection. Protective equipment such as dust mask, non-skid safety shoes, hard hat, or hearing protection used for appropriate conditions will reduce personal injuries.

Failure to comply may result in light personal injury.



WARNING



Do not allow any body part to be trapped by equipment.

Body parts can be crushed by subassemblies during

operation.

Failure to comply may result in death or serious physical injury.

WARNING



Do not allow fluid to leak onto floor when operating equipment. If spill occurs,

clean any fluid on floor before continuing operation.

Failure to comply may result in death or serious personal injury.

WARNING

Do not use this equipment to supply, transport, or store hazardous substances and mixtures in accordance with annex I part 2-5 of the CLP regulation (EG 1272/2008) or HCS 29 CFR 1910.1200 marked with GHS01, GHS06 and GHS08 hazard pictograms shown:



* Indicates change.

Description

NOTE

Install these reels at a height no greater than 20 ft (6.1 m) from the floor to comply with the warranty.

Hose reel models 7134-A, 7135-A, and 7136-A are designed to handle a maximum of 50 feet of hose and be mounted to the wall, ceiling, or floor.

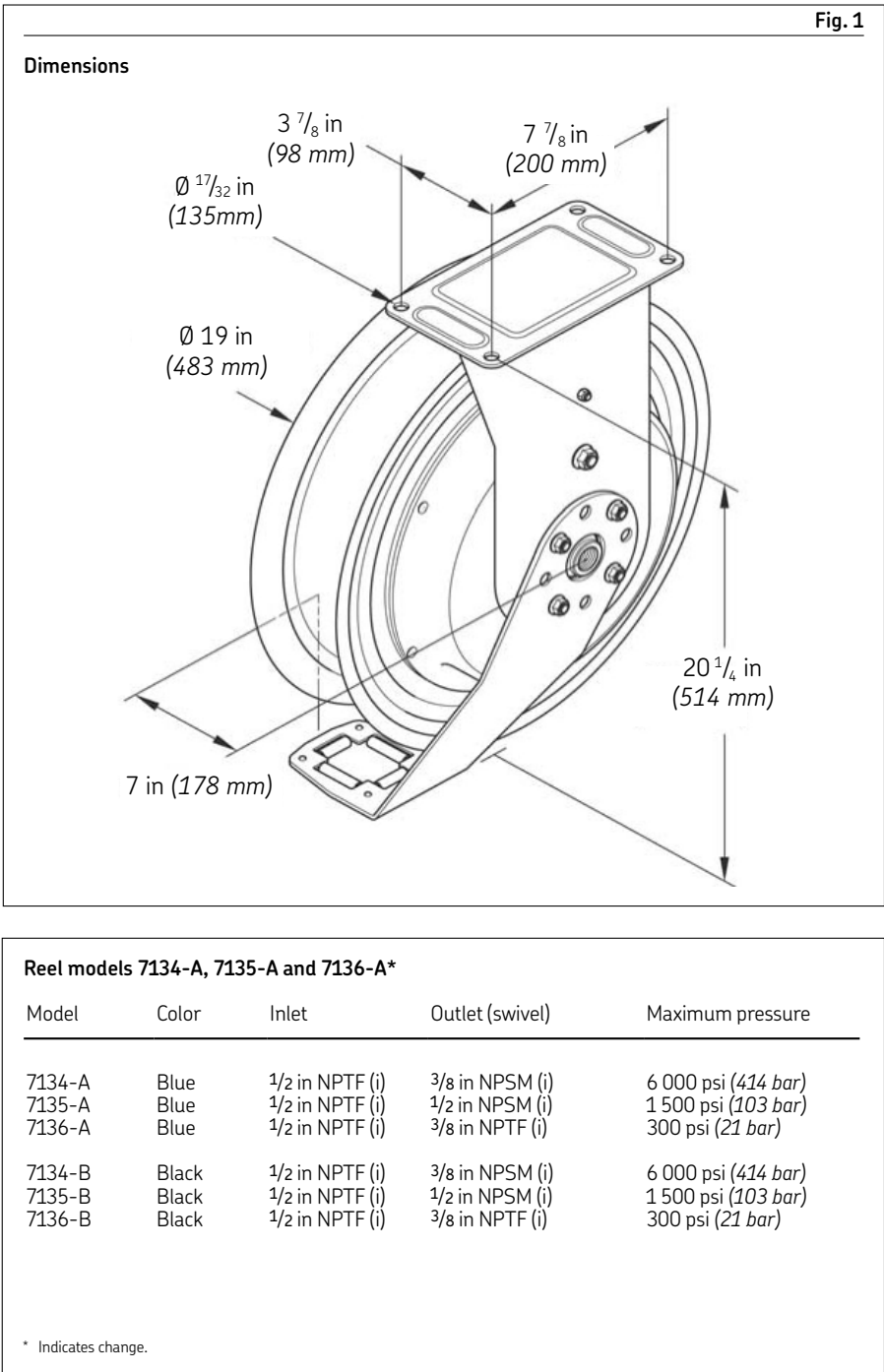
The reels mount as a single unit or in banks of as many as required. Banked reels should be a minimum of 9 in. (228 cm) apart on center. For ease in reel maintenance, a space of up to 15 in (381 mm) is recommended. See Fig. 3, page 10.

Each model reel is spring-powered and self-retracting. When the hose is extended, the reel can be latched on either of two ratchet sections per revolution of the sheave. A pull releases the latch from the ratchet and allows the hose to retract onto the reel.

Reel models 7134-A contains a high-pressure swivel assembly and are designed for dispensing grease.

A medium-pressure swivel assembly is included with Model 7135-A. This model reel is designed for fluid lubricants such as motor and gear oil, and automatic transmission fluid.

Model 7136-A includes a low-pressure swivel for handling air and water.



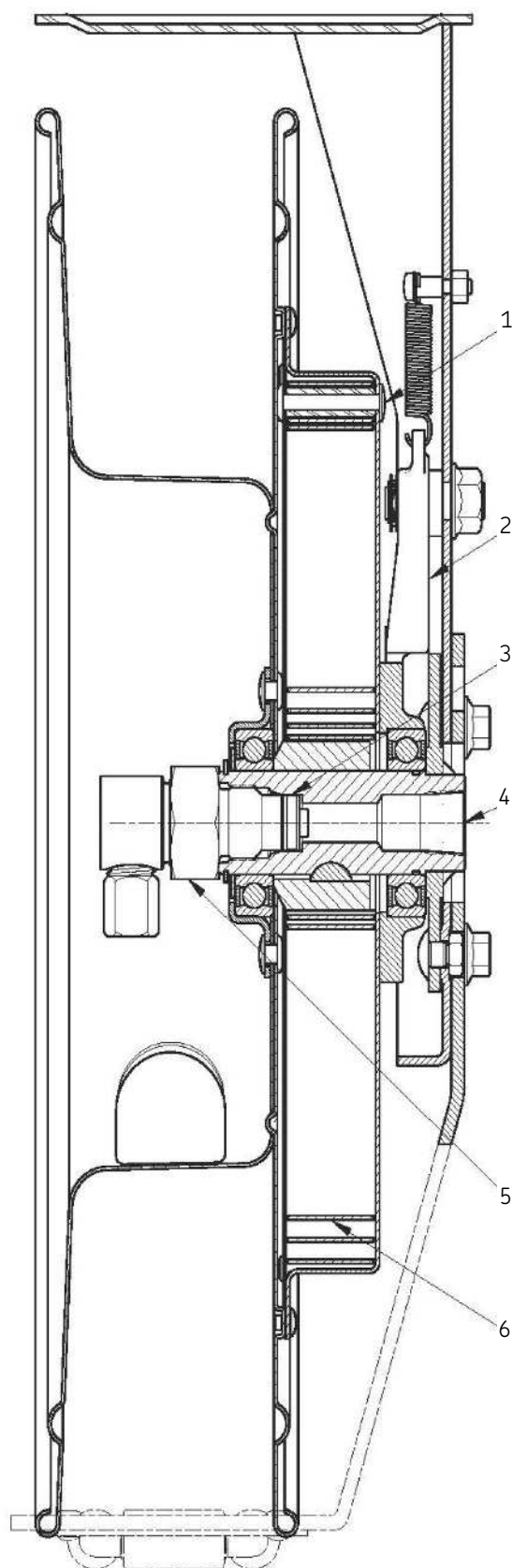
Delivery hoses			
Reel model	Rating	Hose material	Hose length
7134-A	High pressure	1/4 in ID two-wire braid	317874-50
7135-A	Medium pressure	3/8 in NPTF (e) X 1/4 in NPTF (i)	
7136-A	Low pressure	1/2 in ID one-wire braid	317813-50
		1/2 in NPTF (e) X 1/2 in NPTF (e)	
		3/8 in ID spiral reinforced	317803-50
		1/4 in NPTF (e) X 1/4 in NPTF (e)	

Low and medium pressure delivery hoses are available separately in 25, 30, 40 and 50 ft (7.6, 9.1, 12.1, 15.2 m) lengths and high pressure delivery hoses in 30 and 50 ft (9.1 and 15.2 m) lengths. The hose length is designated by the dash number.

Example: 317874-50 is 50 feet long.

Service hints

Refer to Overhaul procedures for details.



Item	Description
1	Observe color of rivet on power spring cassette to identify power spring.
2	Use care during assembly of sheave and power spring onto base and shaft assembly. Ratchet can interfere with pawl.
3	Lubricate seal component with oil prior to assembly (high and medium pressure swivels). Damage to seal component can occur.
4	Apply a high quality thread sealant to component that attaches to main shaft. Product leakage can occur.
5	Inspect low-pressure swivel body and stud prior to kit installation. Mating surfaces are subject to wear.
6	Remove power spring tensions prior to reel disassembly. Personal injury can occur.

Overhaul

NOTE

Refer to **Fig. IPB 1, page 12** for component identification on all overhaul procedures.

⚠ WARNING

Release all pressure within system prior to performing any overhaul procedure.

- Disconnect air supply line to pump motor.
- Operate control valve to discharge remaining pressure within system into an appropriate container.
- Disconnect delivery connecting hose.

Read each step of instructions carefully. Make sure a proper understanding is achieved before proceeding.

Disassembly

NOTE

Release tension on power spring prior to disassembly.

- 1 Pull on delivery hose to unlatch reel.
 - 2 Allow hose to retract onto reel.
 - 3 Turn reel in same direction until power spring bypasses spring arbor (34). Pronounced "click" will sound.
 - 4 Unwrap each coil of hose from sheave assembly (24).
- Remove wing nuts (21) and washers (22) that secure u-bolt (23) to sheave assembly (24).
- 5 Remove u-bolt (23) from sheave (24).
 - 6 For models 7134-A and 7135-A, remove hose from 90 ° union (13 or 18) or swivel assembly (1).

Sheave and power spring assembly

- 7 Remove swivel assembly (1, 10 or 14) from shaft and flange assembly (43).
- 8 For models 7134-A and 7135-A, remove 90 ° union from swivel assembly.
- 9 Remove retaining ring (19) and washer (20) from shaft and flange assembly (43), using care not to mar surface of shaft.
- 10 Remove sheave and power spring assembly from shaft and flange assembly (43).

NOTE

Perform steps 9, 10 and 11 only if replacing sheave assembly (24) or power spring assembly (33).

- 11 Position sheave and power spring assembly with ratchet upward.
- 12 Drill out rivets (45) that secure power spring assembly to sheave assembly.
- 13 Remove power spring assembly from sheave assembly.

Base and hose guide assembly

- 14 Remove spring arbor (34) from shaft and flange assembly.
- 15 Remove woodruff key (35).
- 16 Remove bearing (44) from shaft and flange assembly.
- 17 Remove nuts (38) that secure hose guide assembly (37) to base assembly (39).
- 18 Remove hose guide assembly from base assembly.
- 19 Remove nuts (41) that secure shaft and flange assembly to base assembly.
- 20 Remove shaft and flange assembly from base assembly.
- 21 Remove bolts (42) from shaft and flange assembly as required.
- 22 Remove nut (36) that secures screw (27) to base assembly.
- 23 Remove screw and pawl spring sleeve (28) from base assembly and pawl spring (29).
- 24 Remove nut (40) that secures latch pawl assembly to base assembly.

- 25 Remove latch pawl assembly from base assembly.

Pawl assembly

- 26 Remove retaining ring (26) from pawl shaft (32).
- 27 Remove washers (25), wave spring (30), and pawl (31) from pawl shaft.
- 28 Remove pawl spring from pawl.

Low-pressure swivel assembly

- 29 Remove o-ring (5) from swivel body (4).
- 30 Push retainer (8) toward swivel stud (2) to expose keeper (9).
- 31 Remove keeper (9) from swivel stud (2).
- 32 Remove retainer (8), thrust washer (7), and swivel body (4) from swivel stud (2).
- 33 Remove o-rings (3 and 6) from swivel body (4).

Medium and high pressure swivel assemblies

Body and stud assemblies for medium and high-pressure swivels cannot be repaired. Sealing and back-up components are available separately.

NOTE

Use repair kit for replacement parts. Make sure all components are included in kit before discarding used parts.

Clean and inspect

Clean all metal parts in a modified petroleum-based solvent. Solvent should be environmentally safe. Remove old sealant from threads of all components.

Assembly

NOTE

Prior to assembly, certain components require lubrication. Refer to **Tables 1** and **2** for details.

Pawl assembly

NOTE

Refer to **Fig. 2, page 8** and **Fig. IPB 1, page 12** for component identification on assembly procedures.

- 1 Install pawl shaft (32) threaded end first into inside of base assembly (39).
- 2 Apply medium strength threadlocker to threads of pawl shaft.
- 3 Tighten nut (40) onto pawl shaft from 42 to 48 ft.lbs (57 to 65 Nm) while holding pawl shaft stationary.
- 4 Install pawl (31) flat-side first onto pawl shaft.
- 5 Install washer (25), wave spring (30), and additional washer (25) onto pawl shaft.
- 6 Install retaining ring (26) onto pawl shaft.
- 7 Install pawl spring (29) into eye on pawl. See **Fig. 2, page 8** for proper orientation.
- 8 Install screw (27) into large diameter end of pawl spring sleeve (28).
- 9 Install screw and sleeve assembly through pawl spring and into base and shaft assembly.
- 10 Install nut (36) onto screw, tightening securely.

Table 1

Components lubricated in clean oil

Item	Description
5	O-ring, 7/8 in ID x 1 1/16 in OD
12	Seal, 1/2 in ID x 3/4 in OD
17	Seal, 3/8 in ID x 3/4 in OD

Base and hose guide assembly

- 11 Install bolts (42) into shaft and flange assembly (43).
- 12 Secure shaft and flange assembly to base assembly with nuts (41), tighten nuts securely in a criss-cross pattern.
- 13 Position hose guide assembly (37) onto bolts in base assembly.

NOTE

Hose guide assembly can attach to base assembly in five separate positions. Select required relationship of guide to mounting plate of base assembly.

- 14 Secure hose guide assembly to base assembly with nuts (38), tightening nuts securely in a criss-cross pattern.
- 15 Install and seat bearing (44) onto shaft and flange assembly.
- 16 Install and hold woodruff key (35) into shaft of assembly.
- 17 Slide spring arbor (34), flat side first, onto shaft and onto woodruff key.

Sheave and power spring assembly

- 18 Position sheave assembly (24) bearing side up.

NOTE

Make sure to align mark on power spring assembly with alignment mark on sheave assembly. See **Fig. IPB 1, page 12**.

- 19 Position power spring assembly (33) at alignment marks on sheave assembly.
- 20 Secure power spring assembly to sheave assembly using screws and nuts included with replacement assembly. Be sure screw heads seat properly into rib of sheave.
- 21 Install and seat power spring and sheave assembly onto spring arbor, verifying end of power spring properly engages cam on spring arbor. Ratchet must clear pawl or engage properly.
- 22 Install washer (20) and retaining ring (19) onto shaft and flange assembly.

Swivel assemblies

Low-pressure swivel assembly

NOTE

Do not mix o-rings. O-ring (6) is slightly larger in outside diameter than o-ring (3).

- 23 Install o-ring (6) into threaded end of swivel body (4).
- 24 Install o-ring (3) into opposite end of swivel body.
- 25 Install swivel body onto swivel stud (2).
- 26 Install thrust washer (7) and retainer (8), flat side first onto swivel stud (2).
- 27 Push retainer to expose groove in swivel stud (2).
- 28 Install keeper (9) onto swivel stud (2).
- 29 Install o-ring (5) onto swivel body.
- 30 Screw swivel assembly into base and shaft assembly.
- 31 Tighten swivel assembly securely.

Table 2

Components lubricated in lithium grease

Item	Description
3	O-ring, 1/2 in ID x 5/8 in OD
4	Cavity in swivel body
6	O-ring, 1/2 in ID x 11/16 in OD
29	Hooks of pawl spring
30	Wave spring
32	Bearing surface of pawl shaft
33	Ratchet teeth on power spring assembly

Medium and high-pressure swivel assemblies

- 32 Screw 90 ° union (13 or 18) with thread sealant into swivel body and stud assembly.
- 33 For model 7134-A, install and seat back-up washer (16) and seal (17) onto body and stud assembly (15).
- 34 For model 7135-A, install and seat seal (12), heel end first, onto body and stud assembly (11).
- 35 Screw swivel assembly into base and shaft assembly.
- 36 Tighten swivel assembly securely.

Bench test

While facing ratchet on power spring assembly, turn reel in counterclockwise direction and allow ratchet to latch pawl.

If reel does not tension or latch properly, refer to troubleshooting chart.

Installation

On bench

- 1 Feed end of delivery hose through opening in sheave assembly (24).

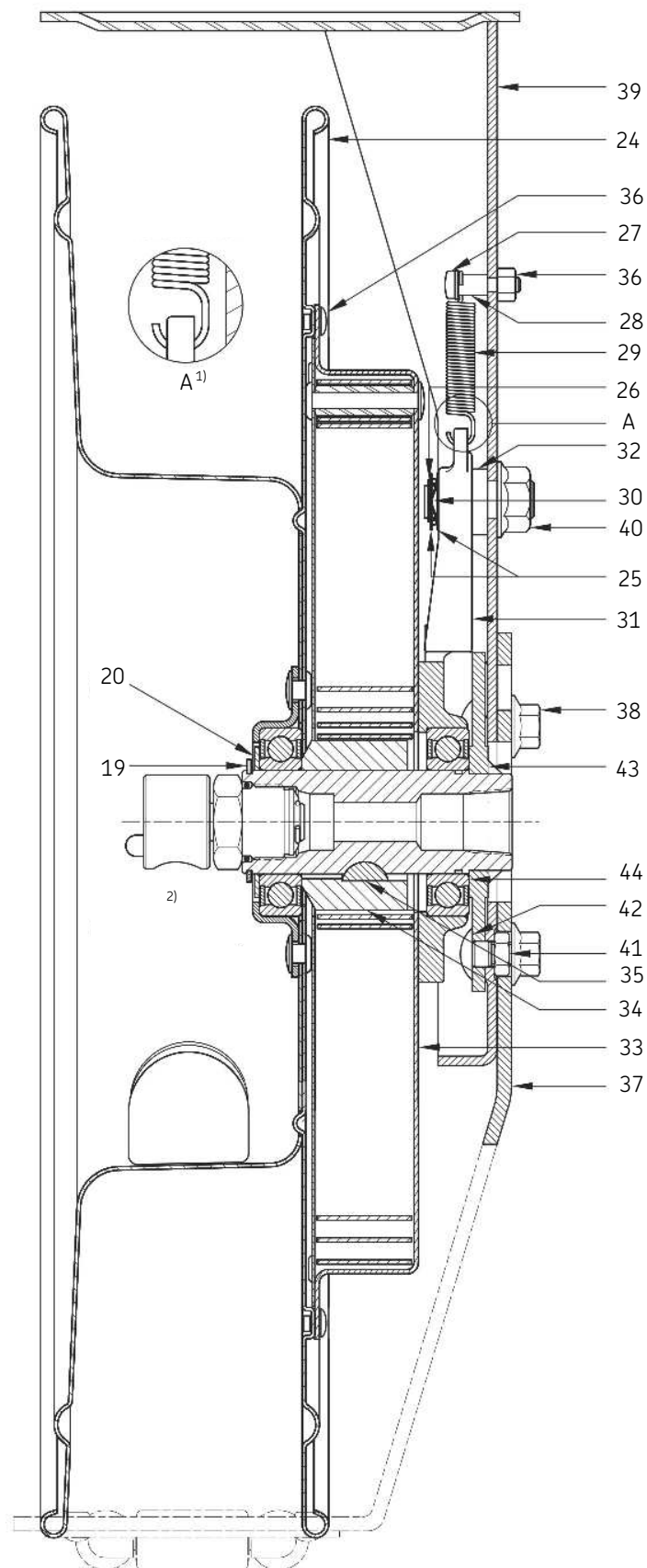
NOTE

Final u-bolt adjustment must occur after hose has been pressurized.

- 2 Screw delivery hose securely into 90 ° union (13 or 18) or into swivel stud (2).
- 3 Loosely attach delivery hose to sheave assembly with u-bolt (23), washers (22) and wing nuts (21).
- 4 Rotate sheave assembly to wrap hose onto reel. Clicking sound is power spring bypassing cam on spring arbor.

Fig. 2

Heavy-duty hose reels - section view



1) Spring hook points toward reel.

2) Low-pressure swivel assembly

NOTE

It is mandatory that these reels be installed at a height no greater than 20 ft (6.1 m) from the floor. Should the existing ceiling height be greater, mount the reel to a suspension bracket. See **Fig. 3, page 10**.

- 5 Screw connecting hose (with thread sealant) into outlet of reel.
- 6 Mount reel assembly with appropriate hardware.

NOTE

Fully extend hose when system is pressurized.
Failure to comply may result in damage to sheave assembly.

- 7 Attach connecting hose to distribution system.
- 8 Install control valve.
- 9 Pull hose fully from reel and pressurize system.
- 10 Tighten wing nuts onto u-bolt.
- 11 Retract hose onto reel.

NOTE

Do not overwind power spring. Too much tension reduces life of product.
Failure to comply may result in damage to spring.

- 12 Install and secure hose stop to desired position.

Setting spring tension

To adjust tension on the power spring:

NOTE

Add or remove hose coils to provide amount of spring tension that gently holds hose stop against hose guide. When hose is fully extended from reel, power spring should be a minimum of 1/2 turn from a fully wound condition.

- 13 Add/remove one coil of hose to/from sheave assembly.
- 14 Repeat **step 13** until proper tension is achieved.

⚠ WARNING

Do not exceed lowest pressure rating of any component in system.

Never point control valve at any portion of body or another person. Lubricant discharged at high velocity can penetrate skin and cause severe injury. Should any fluid appear to puncture skin, seek medical care immediately.

Ensure all components are in operable condition. Replace any necessary parts prior to operation.

Hold delivery hose securely until reel is securely latched or fully retracted. Uncontrolled retraction can result in injury.

Failure to comply warnings stated above may result in death or serious personal injury.

Should reel latch in this condition, it will be necessary to have an assistant maintain tension on hose while latching mechanism is manually released.

- 1 Instruct assistant to grip hose securely with both hands to prevent uncontrolled retraction.
- 2 Grip sheave assembly securely with gloved hands.
- 3 Turn sheave assembly in direction just enough that allows pawl (32) to be free of tension from ratchet on power spring assembly (34). This direction further increases tension on power spring.
- 4 While maintaining position of sheave assembly with one hand, move pawl away from ratchet. Use a screwdriver or other suitable tool.
- 5 Instruct assistant to allow hose to retract slowly onto sheave assembly.

Reel operation

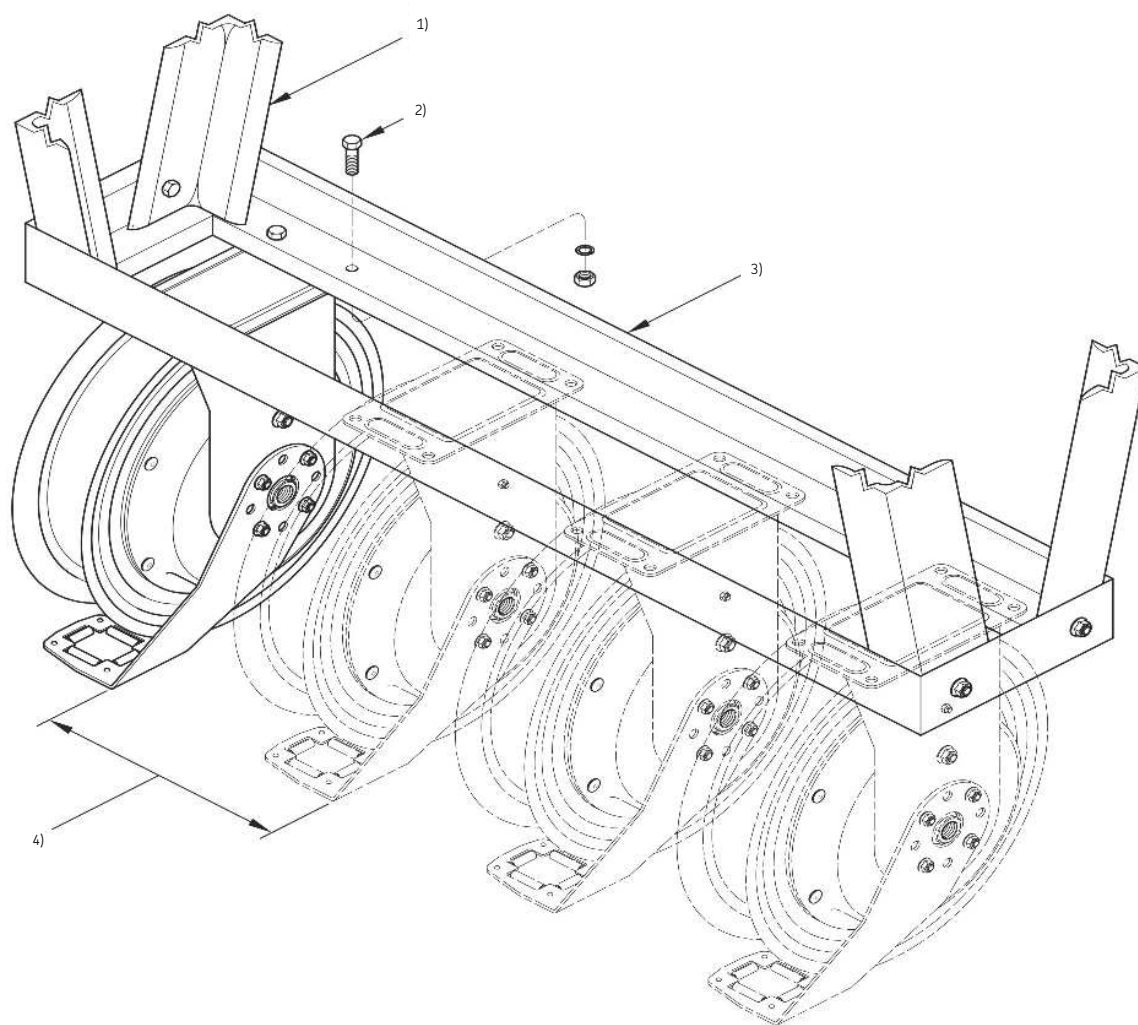
Latch lockout

Do not extend hose from reel too rapidly. Too much velocity can cause reel to over-run and latch. If this occurs, pulling on hose will not release latch mechanism.

⚠ WARNING

Reel is under maximum spring tension. Personal injury may occur.

Suspension bracket for ceilings greater than 20 ft (6.1 m) - typical



- 1) Suspension angle iron for attachment to joist
- 2) $\frac{7}{16}$ in - 14 x 1 in bolt
- 3) Welded angle iron to form base (locally fabricated)
- 4) 9 in (23 cm) minimum
15 in (38 cm) recommended

Reel packages

Hose reel models 7134-A, 7135-A and 7136-A are included in the reel packages listed below.

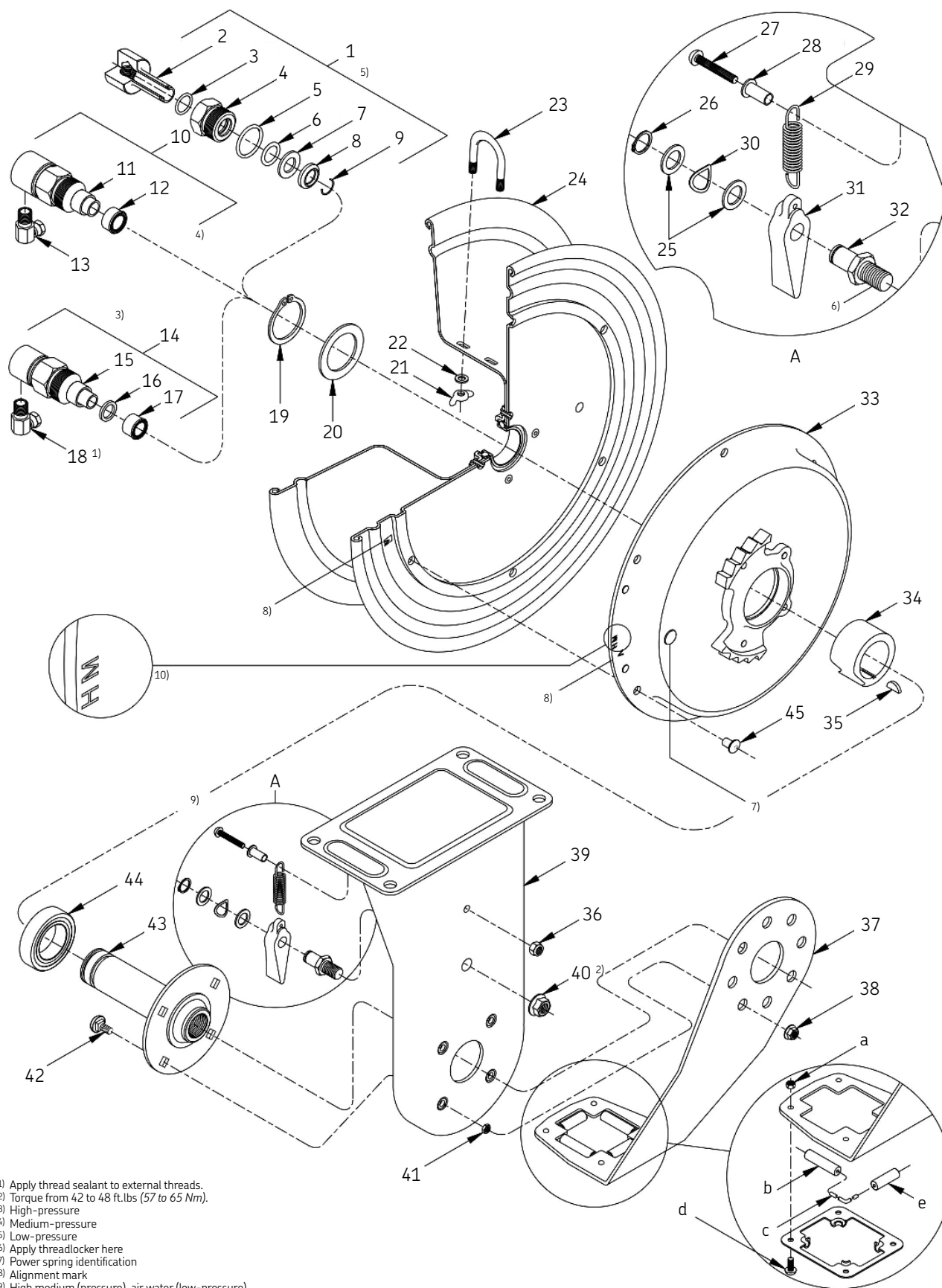
Reel packages									
Reel package model	Hose reel (bare)	Color	Inlet components		Outlet components				
			90 ° union	Connection hose	Bushing	Delivery hose	Air coupler	Air connector	Hose Stop
8078-BBL	7134-A	Blue	1001-86	317876-2	N/A	317874-50	N/A	N/A	337439
8078-BBK	7134-B	Black	1001-86	317876-2	N/A	317874-50	N/A	N/A	337439
8078-DBL	7135-A	Blue	1001-88	317813-2	N/A	317813-50	N/A	N/A	337439
8078-DBK	7135-B	Black	1001-88	317813-2	N/A	317813-50	N/A	N/A	337439
8078-FBL	7136-A	Blue	1001-88	317811-2	339236	317803-50	328030	328034	337439
8078-FBK	7136-B	Black	1001-88	317811-2	339236	317803-50	328030	328034	337439

N/A = Not applicable

Troubleshooting chart		
Indications	Possible problems	Solution
Reel does not latch. Reel does not retract. Reel retracts partially.	Spring (29) broken or not attached to latch pawl (31) . Power spring broken. ¹⁾ 1. Improper power spring tension. 2. <i>Reel installed over 20 ft (6.1 m).</i> 3. <i>Hose length greater than 50 ft (15.2 m).</i>	Replace or secure spring (29) . Replace power spring assembly (33) . 1. Set tension properly. 2. Install reel at 20 ft (6.1 m). 3. Install a hose not to exceed 50 ft (15.2 m).
Reel does not unlatch after maximum length of hose is removed.	1. <i>Power spring wound solid.</i> 2. <i>Hose removed from the reel too quickly.</i>	1. Decrease power spring pre-wind. 2. Remove hose slowly when close to being fully extended.
Material leakage at the swivel assembly.	1. Connection not sufficiently tight and/or thread sealant missing at 90° union. 2. Worn or damaged swivel assembly.	1. Apply sealant to male threads of 90 ° union and tighten connections. 2. Repair or replace swivel.
Material leakage at shaft and flange assembly (43) .	Connection hose not sufficiently tight and/or thread sealant missing or inadequate.	Apply sealant to connection hose and tighten to shaft and flange assembly (43) .

¹⁾ The possible causes for broken components are listed in *italics*

Heavy-duty hose reels - exploded view



Parts list for model 7134 (all colors)*

Item	Description	Model	Part number	Quantity
14	Swivel assembly, high-pressure		339226-1	1
15	Body and stud assembly, swivel			1
16	Washer, back-up (brass)		1)	1
17	Seal, 3/8 in ID x 3/4 in OD		1)	1
18	90 ° union, 3/8 in NPTF x 3/8 in NPSM		1001-66	1
19	Ring, Retaining		171007-33	1
20	Washer		339209	1
21	Nut, wing, 1/4 -20			2
22	Washer, 5/16 in			2
23	U-bolt		339219	1
24	Sheave assembly (w/ bearing) - blue	7134-A	339199-B	1
	Sheave assembly (w/ bearing) - black	7134-B	339199-C	1
25	Washer		2)	2
26	Ring, retaining		2)	1
27	Screw, 10-32 x 7/8 in			1
28	Sleeve, pawl spring		339212 2)	1
29	Spring, pawl		339210 2)	1
30	Spring, wave		2)	1
31	Pawl		2)	1
32	Shaft, pawl		2)	1
33	Spring assembly, power (high/med) - blue	7134-A	339200-D	1
	Spring assembly, power (high/med) - black	7134-B	339200-E	1
	Spring assembly, power (low)		339200-A	1
34	Arbor, spring		339197	1
35	Key, woodruff		172209-3	1
36	Nut, elastic stop, 10-32			1
37	Guide assembly, hose - blue	7134-A	339174-B	1
	Guide assembly, hose - black	7134-B	339174-C	1
38	Nut, flange, 5/16 -18			4
39	Base assembly - blue	7134-A	339182-A	1
	Base assembly - black	7134-B	339182-B	1
40	Nut, 1/2 -20			1
41	Nut, jam, 5/16 -18		77696	4
42	Bolt, carriage, 5/16 -18 x 1 in			4
43	Shaft and flange assembly		339214-1	1
44	Bearing, ball		339193	1
45	Rivet			6

Part numbers left blank are not available seperately.

1) Repair kit 393695 high pressure swivel repair kit.

2) Repair kit 393692 pawl assembly kit.

* Indicates change.

Parts list for model 7135 (all colors)*

Item	Description	Model	Part number	Quantity
10	Swivel assembly, medium-pressure		339227	1
11	Body and stud assembly, swivel			1
12	Seal, 1/2 in ID x 3/4 in OD (pack of five)			1
13	90 ° Union, 1/2 in NPTF x 1/2 in NPSM			1
18	90 ° union, 3/8 in NPTF x 3/8 in NPSM		1001-66	1
19	Ring, retaining		171007-33	1
20	Washer		339209	1
21	Nut, wing, 1/4 -20			2
22	Washer, 5/16 in			2
23	U-bolt		339219	1
24	Sheave assembly (w/ bearing) - blue	7135-A	339199-B	1
	Sheave assembly (w/ bearing) - black	7135-B	339199-C	1
25	Washer		1)	2
26	Ring, retaining		1)	1
27	Screw, 10-32 x 7/8 in			1
28	Sleeve, pawl spring		339212 1)	1
29	Spring, pawl		339210 1)	1
30	Spring, wave		1)	1
31	Pawl		1)	1
32	Shaft, pawl		1)	1
33	Spring assembly, power (high/med) - blue	7135-A	339200-D	1
	Spring assembly, power (high/med) - black	7135-B	339200-E	1
34	Arbor, spring		339197	1
35	Key, woodruff		172209-3	1
36	Nut, elastic stop, 10-32			1
37	Guide assembly, hose - blue	7135-A	339174-B	1
	Guide assembly, hose - black	7135-B	339174-C	1
38	Nut, flange, 5/16 -18			4
39	Base assembly - blue	7135-A	339182-A	1
	Base assembly - black	7135-B	339182-B	1
40	Nut, 1/2 -20			1
41	Nut, jam, 5/16 -18		77696	4
42	Bolt, carriage, 5/16 -18 x 1 in			4
43	Shaft and flange assembly		339214-1	1
44	Bearing, ball		339193	1
45	Rivet			6

Part numbers left blank are not available separately.

1) Repair kit 393692 pawl assembly kit.

* Indicates change.

**Hose guide assembly kit item
(all models) 1)**

Item	Description	Quantity
a	Nut, elastic stop, 10-32	4
b	Roller, long	2
c	Pin	2
d	Screw, 10-32 x 1/2 in	4
e	Roller, short	2

1) Repair 393696 hose guide assembly repair kit (contains hardware to replace drilled rivets).

Parts list for model 7136 (all colors)*

Item	Description	Model	Part number	Quantity
1	Swivel assy, low pressure		339228	1
2	Stud, swivel		339241	1
3	O-ring, 1/2 in ID x 5/8 in OD (pack of ten)		X171009-2 ²⁾	1
4	Body, Swivel		339242	1
5	O-ring, 7/8 in ID x 1 1/16 in OD (pack of ten)		X171009-18 ²⁾	1
6	O-ring, 1/2 in ID x 11/16 in OD (pack of ten)		X171000-10 ²⁾	1
7	Washer, thrust (nylon)		²⁾	1
8	Retainer		339239	1
9	Keeper		²⁾	1
18	90 ° union, 3/8 in NPTF x 3/8 in NPSM		1001-66	1
19	Ring, retaining		171007-33	1
20	Washer		339209	1
21	Nut, wing, 1/4 -20			2
22	Washer, 5/16 in			2
23	U-bolt		339219	1
24	Sheave assembly (w/ bearing) - blue	7136-A	339199-B	1
	Sheave assembly (w/ bearing) - black	7136-B	339199-C	1
25	Washer		¹⁾	2
26	Ring, retaining		¹⁾	1
27	Screw, 10-32 x 7/8 in			1
28	Sleeve, pawl spring		339212 ¹⁾	1
29	Spring, pawl		339210 ¹⁾	1
30	Spring, wave		¹⁾	1
31	Pawl		¹⁾	1
32	Shaft, pawl		¹⁾	1
33	Spring assembly, power (high/med) - blue	7136-A	339200-G	1
	Spring assembly, power (high/med) - black	7136-B	339200-H	1
34	Arbor, spring		339197	1
35	Key, woodruff		172209-3	1
36	Nut, elastic stop, 10-32			1
37	Guide assembly, hose - blue	7136-A	339174-B	1
	Guide assembly, hose - black	7136-B	339174-C	1
38	Nut, flange, 5/16 -18			4
39	Base assembly - blue	7136-A	339182-A	1
	Base assembly - black	7136-B	339182-B	1
40	Nut, 1/2 -20			1
41	Nut, jam, 5/16 -18		77696	4
42	Bolt, carriage, 5/16 -18 x 1 in			4

Part numbers left blank are not available separately.

¹⁾ Repair kit 393692 pawl assembly kit.

²⁾ Repair kit 393693 low-pressure swivel repair kit.

* Indicates change.

alemite.com

® Alemite, LLC is a registered trademark.

The contents of this publication are the copyright of the publisher and may not be reproduced (even extracts) unless prior written permission is granted. Every care has been taken to ensure the accuracy of the information contained in this publication but no liability can be accepted for any loss or damage whether direct, indirect or consequential arising out of the use of the information contained herein.

May 2023 · Form 671067 Version 2