


SKF @ptitude Observer Database Administrator

User Manual Part No. 32170600-EN

Revision H

Observer 10.2.0

 **WARNING!** - Read this manual before using this product. Failure to follow the instructions and safety precautions in this manual can result in serious injury, damage to the product, or incorrect readings. Keep this manual in a safe location for future reference.

Copyright © 2017 by SKF Group

All rights reserved.

SKF Condition Monitoring Center – Luleå

Aurorum 30, 977 75 Luleå, Sweden

Telephone: +46 (0) 31 337 10 00, Fax: +46 (0) 920 134 40



SKF Group

® SKF is a registered trademark of the SKF Group.
All other trademarks are the property of their respective owners.
© SKF 2017

The contents of this publication are the copyright of the publisher and may not be reproduced (even extracts) unless prior written permission is granted. Every care has been taken to ensure the accuracy of the information contained in this publication but no liability can be accepted for any loss or damage whether direct, indirect or consequential arising out of the use of the information contained herein. SKF reserves the right to alter any part of this publication without prior notice.

Patents: US 4,768,380 • US 5,633,811 • US 5,679,900 • US 5,845,230 • US 5,852,351 •
US 5,854,553 • US 5,854,994 • US 5,870,699 • US 5,907,491 • US 5,992,237 • US 6,006,164 •
US 6,124,692 • US 6,138,078 • US 6,199,422 • US 6,202,491 • US 6,275,781 • US 6,301,514 •
US 6,437,692 • US 6,489,884 • US 6,513,386 • US 6,633,822 • US 6,789,025 • US 6,792,360 •
US 7,103,511 • US 7,697,492 • WO/2003/048714

Product Support – Contact Information

Product Support – To request a [Return Authorization](#), [Product Calibration](#) or a [Product Support Plan](#), use the web page links for direct contact and support.

Product Sales – For information on purchasing condition monitoring products, services or customer support, contact your [local SKF sales office](#).

General Product Information

For general product information (i.e., product data sheet, accessories catalog, etc.), visit the [Condition Monitoring Products](#) page on SKF.com and select the appropriate product link.

Technical Support Group

Discuss/review issues of specific interest with maintenance and reliability specialists from around the world at the [SKF Knowledge Centre](#).

For technical support, contact TSG-EMEA@skf.com for customers in Europe, MiddleEast and Africa.
Telephone +46 (0) 31 337 65 00
or TSG-Americas@skf.com for customers in North America, South America and Asia.
Telephone +1 800 523 7514
Telephone in Latin America +55 11 4448 8620

Product Registration

Please take a moment to register your product at www.skf.com/cm/register to receive exclusive benefits offered only to our registered customers, including receiving technical support, tracking your proof of ownership, and staying informed about upgrades and special offers. (Please visit our website for more details on these benefits.)

Tell us how we're doing!

It's important that you're satisfied with the quality of our product user manuals. We appreciate your feedback; if you have comments or suggestions for improvement, [please tell us how we're doing!](#)

020917dc

Table of Contents

Introduction	1
Overview	1-1
Installation	1-1
Starting	1-1
SQL Server Interfaces	2
Launching	2-1
Server Operations	2-2
Database Operations	2-7
End User License Agreement	A

1 Introduction

Overview

The SKF @ptitude Observer Database Administrator is an invaluable tool when working with SKF @ptitude Observer system. It has many features which are necessary to use in order to have a complete and updated system.

The SKF @ptitude Observer Database Administrator has tools for working with the SKF @ptitude Observer database which currently supports SQL Server versions from 2005 to 2016.

SKF @ptitude Observer is shipped with SQL Server Express 2014 which is a free version of the SQL Server engine but with the limitation of storing ten Gigabytes per database.

Installation

The SKF @ptitude Observer Database Administrator tool is installed from the auto run menu of the SKF @ptitude Observer DVD. It is included in the SKF @ptitude Monitoring Suite package as an option. For detailed information on how to install SKF @ptitude Monitoring Suite, refer to "@ptitude Observer Installation Manual".

The default installation path is **C:\Program Files (x86)\SKF\ObserverX.Y**.

Starting

To start @ptitude Observer Database Administrator tool, click the shortcut on the start menu under **Programs\SKF @ptitude Monitoring Suite X.Y \@ptitude Observer Database administrator**.

2 SQL Server Interfaces

Launching

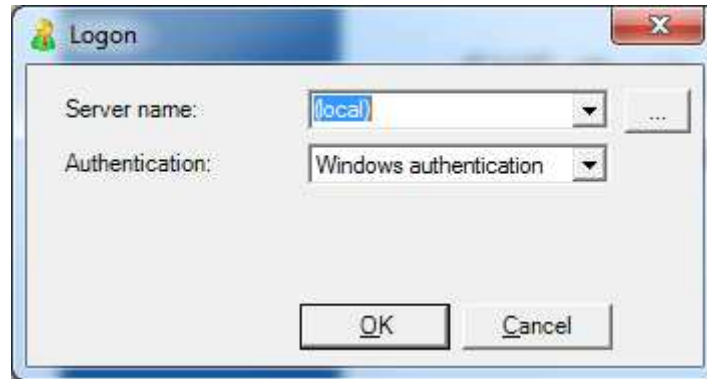


Figure 2 - 1.
Example of Logon to SQL Server.

- **Server Name** specifies which computer holds the database server. It is possible to specify either an IP address or a computer name, if you wish to connect to a different database server. The default value is *(Local)* which specifies the computer you are working with at the moment.
- **Authentication** defines whether to use *Windows authentication* or *SQL Server authentication*.
- **User name** is required for *SQL Server authentication*. The user name "sa" is frequently used. However, user name can be changed along with the password if you wish to login with different criteria.
- **Password** is required for *SQL Server authentication*.

After a successful login, a screen opens up with a list of available SQL databases. The following is an example.

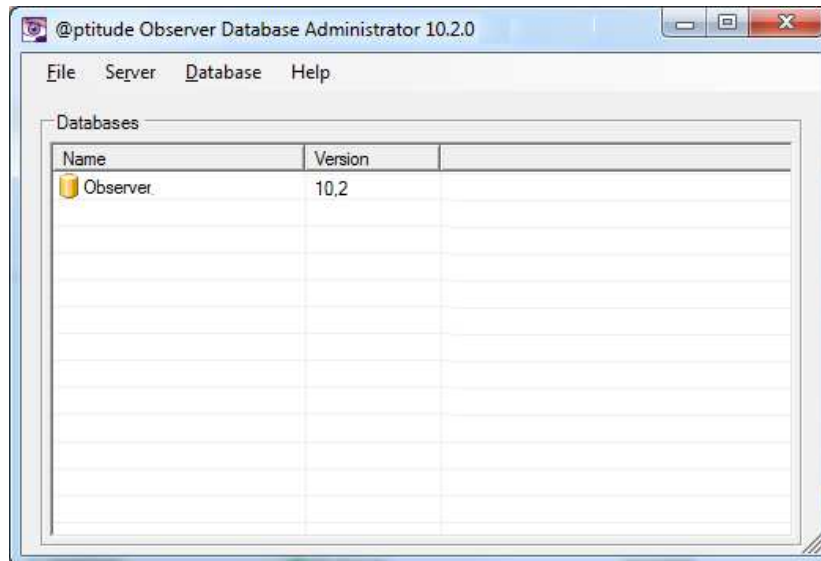


Figure 2 - 2.
Example of Overview of SQL Databases

SQL server interfaces are grouped into two operations; Server operations and Database operations.

Server Operations

The server operations are, as the name suggests, operations related to the server rather than any specific database.

The following are the available server operations.

- Install database from DVD
- Create new database
- Attach database
- Manage logins
- Database transfer
- Restore database
- Hide system databases
- Update database list

Install Database from DVD

Install database from DVD allows to install available @ptitude Observer databases from the @ptitude Observer DVD.

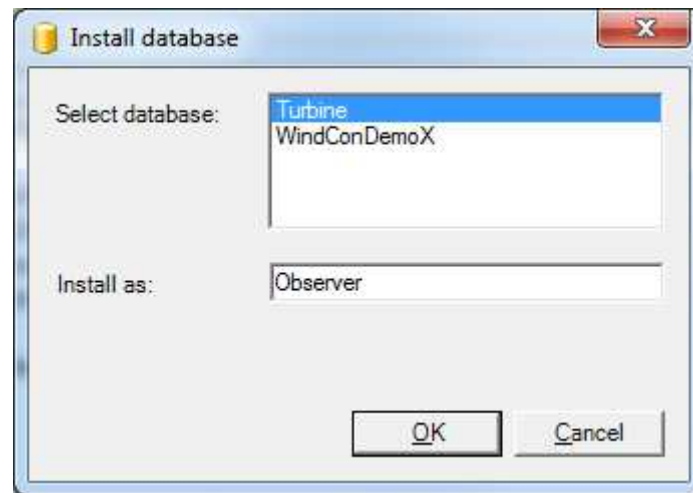


Figure 2 - 3.
Example of Install a SQL Database.

- **Select database** you wish to install.
- **Install as** assigns a name to the selected database.

Create New Database

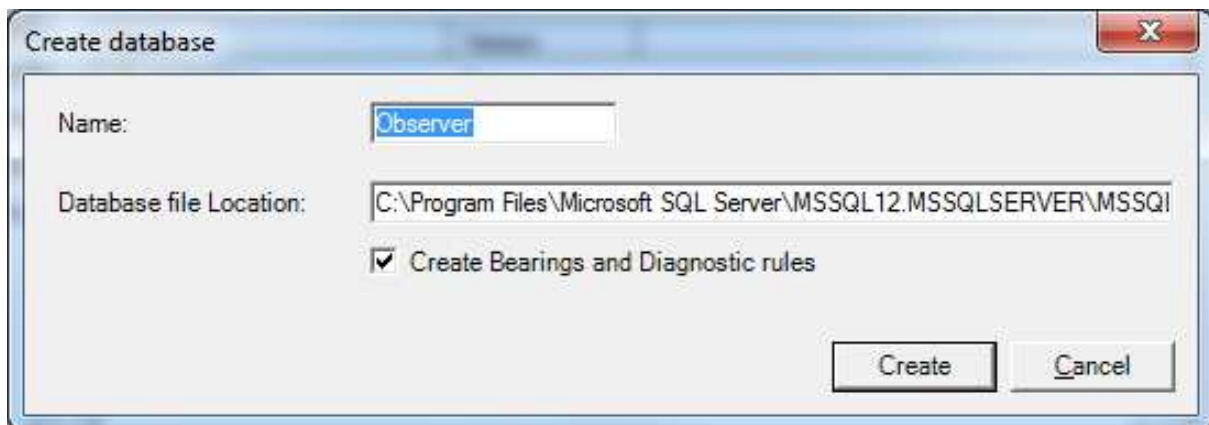


Figure 2 - 4.
Example of Create a SQL Database.

- **Name** is for the database to be created. This name cannot be the same as an existing database name.
- **Database file location** is where the new database shall reside.

Attach Database

Attach database is used to attach a detached database to the SQL server.

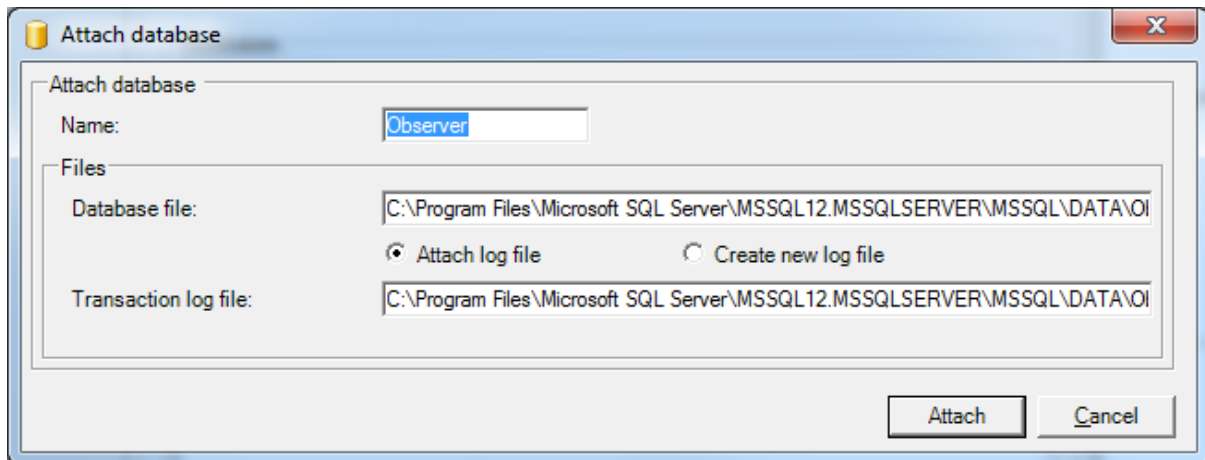


Figure 2 - 5.
Example of Attach a SQL Database.

- **Name** is the database to be attached.
- **Database file** is the .mdf file of the database to be attached.
- **Transaction log file** is the SQL server log file of the database to be attached. You may select to attach an existing log file or create a new one.
 - **Attach log file** allows to attach an existing log file from the location stated at **Transaction log file**.
 - **Create new log file** allows to create a new log file.

Manage Logins

Manage logins operation allows to add or remove SQL Server logins. Later, these logins can be added to the list of the [Manage Users](#) in order to access specific databases. Note that the logins and users you manage in @ptitude Observer Database Administrator tool are for the SQL server and the databases only. They are not the users who can configure in @ptitude Observer.

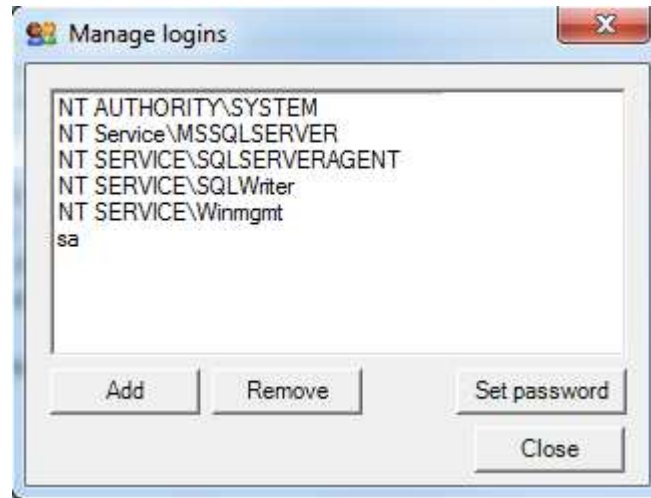


Figure 2 - 6.
Example of Manage Logins on SQL Server.

- **Add** allows you to add a user with name and password to the SQL Server logins.
- **Remove** eliminates the selected user from the SQL Server logins.
- **Set password** allows you to change the current password of the selected user.

Database Transfer

Database transfer enables the user to transfer a database from one location to another. This feature is often used by MasCon48 portable unit users to transfer the database from the portable unit to a stationary or portable PC or vice versa.

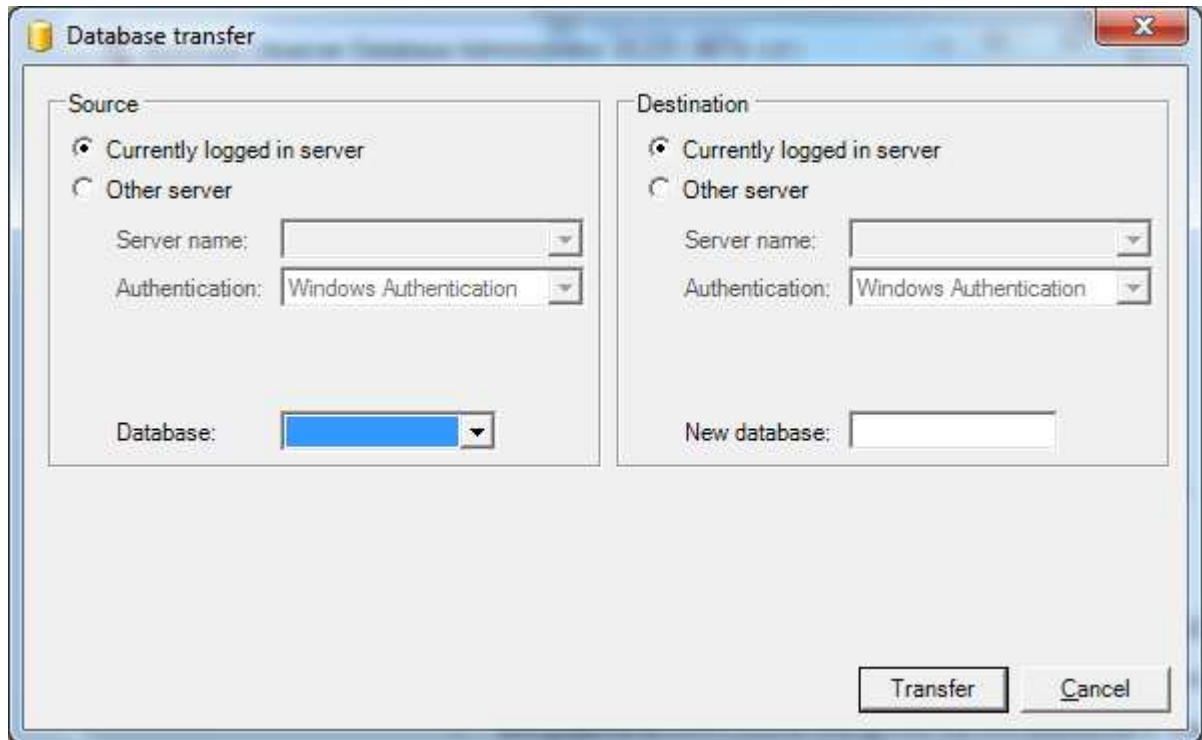


Figure 2 - 7.
Example of SQL Server Database Transfer.

- **Source** refers to the source location from which the database should be copied.
 - **Currently logged in server** is the SQL Server that @ptitude Observer Database Administrator tool has been connected to when starting the software.
 - **Other server** refers to a server located in a different location rather than the current location. In this case, you are to enter additional information such as the server name, authentication and database. In addition, login and password are required if the authentication has been set to SQL Server authentication.
- **Destination** refers to the target location to which the database should be copied.
 - **Currently logged in server** is the SQL Server that @ptitude Observer Database Administrator tool has been connected to when starting the software.
 - **Other server** refers to a server located in a different location than the current location. In this case, you are to enter additional information such as the server name, authentication and new database name. In addition, login and password are required if the authentication has been set to SQL Server authentication. The new database name cannot be an already existing name in the destination server.

Restore Database

Restore database operation restores databases from the backup files, if necessary. Backup files are handled by [Manage Backup](#) interface under Database Operations.

Hide System Databases

Hide system databases operation is a toggle button that shows or hides system databases from the list of databases.

Update Database List

Update database list refreshes the list of databases.

Database Operations

The database interfaces are, as the name suggests, the interfaces that are related to databases. The specific database on which the interface is to be performed is selected from the database list. Most interfaces support the selection of multiple databases if more than one is installed. To select multiple databases, hold the [Ctrl-key] or the [shift-key] and click on the databases in the list. Remember to double check which databases you have selected. Model, Master, msdb, pubs and tempdb databases should never, under any circumstances be selected for modification.

The following are the available database operations.

- [Upgrade selected databases](#)
- [Update diagnoses](#)
- [Update bearing library](#)
- [Update to UTC](#)
- [Update Seeds](#)
- [Manage users](#)
- [Manage backup](#)
- [Backup now](#)
- [Detach database](#)
- [Shrink database](#)
- [Run SQL script](#)

Upgrade Selected Databases

Upgrade selected databases operation upgrades the selected databases according to definition files. A definition file specifies how the database structure should look like in a @ptitude Observer database. This feature is used when upgrading the system to the new version of @ptitude Observer. The definition file is located in the @ptitude Observer DVD under the directory NewVer\Database administrator and has the extension .DEF.

The interface can take from 10 seconds up to two minutes depending on the speed of the CPU and the available memory at the moment. When the interface is completed, the user will receive a message stating that the upgrade has been finished. Otherwise, the user will receive an error message.

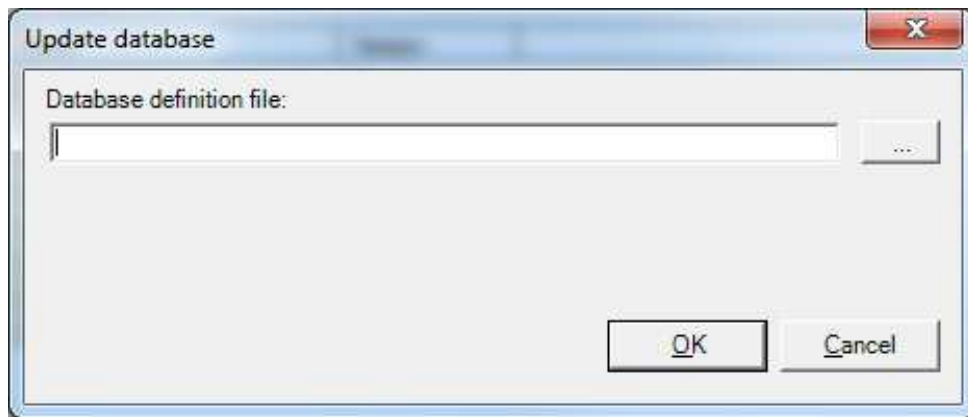


Figure 2 - 8.
Update a SQL Database.

- **Database definition file** is a text file with .DEF extension. It is used to upgrade the selected database(s) to the latest version. The database definition file can be found in the directory where Observer is installed or on the Observer DVD in the NewVer/Database administrator directory.

Update Diagnoses

Update Diagnoses updates the standard diagnosis rules with the latest released rules for the selected database(s). You may change any of the displayed unit values.

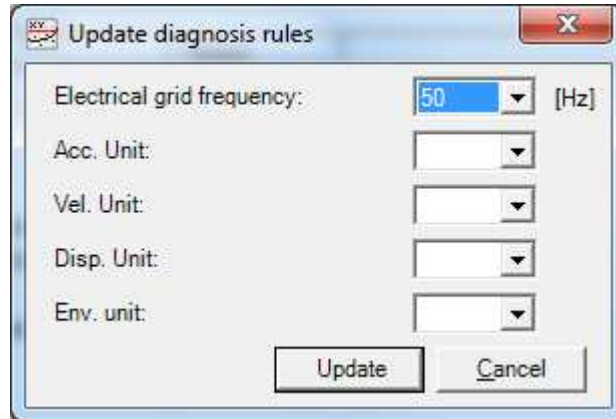


Figure 2 - 9.
Example of Update Diagnosis Rules on a SQL Database.

Update Bearing Library

Update bearing library updates the bearing information in the selected @ptitude Observer database(s) with new bearings as new bearings become available on the market.

The update contains information from 20 different bearing manufactures including SKF. The bearing information file has the extension .brg, and is located in the directory NewVer\Database administrator in the @ptitude Observer DVD.

It is recommended that you update the bearing database when you update @ptitude Observer to a newer version.

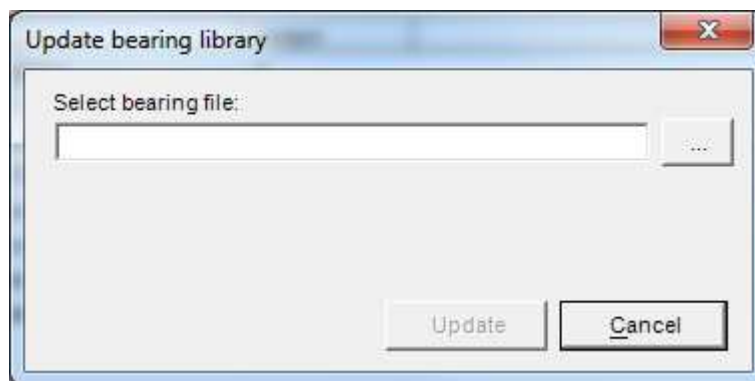


Figure 2 - 10.
Update a Bearing Library on a SQL Database.

Update to UTC

Update to UTC (universal time) converts the local time to the universal time. In order to have the time converted correctly, you need to enter the local time zone of @ptitude Observer Monitor computer. Note that @ptitude Observer 8 and later versions use the universal time. Therefore, this function is mainly useful for the older databases which were converted to the latest version.

Update Seeds

This function should be executed on the database if the database had previously been set up as a destination for an SQL Server replication procedure (configured in SQL Server Enterprise Manager). This will restore the Seed.

Manage Users

The manage users can be used to add or remove a user for the selected database. However, this is not to be confused with the users in *@ptitude Observer*.

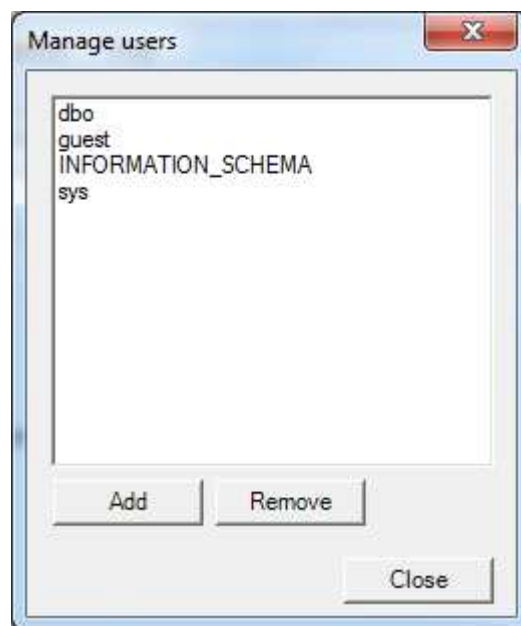


Figure 2 - 11.
Example of Manage Users on a SQL Database.

- **Add** brings you to Edit user screen as shown below and allows you to add a user.
- **Remove** allows you to remove a selected user from the list.

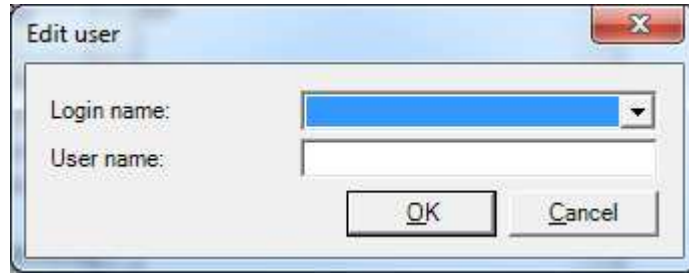


Figure 2 - 12.
Edit a User on a SQL Database.

- **Login name** is a name that was created by Manage Logins under Server Interfaces.
- **User name** is the name to be used which is optional. If user name is omitted, the login name becomes user name.

Manage Backup

It is important that you make sure that the system performs backups frequently.

The manage backup allows you to create backup jobs inside the SQL Server. The backup job creates a .bak file and places the file in the path directory specified with the form below. The backups can be performed daily at a specific time. It is recommended that the backups are configured to run when the computer or network environment has low workload. This is a complete backup which backs up everything in the @ptitude Observer database each time it runs and overwrites existing backup files if they exist.

The file has been moved or copied to a backup media such as a backup tape, CD or DVD. It is common that the backup is performed directly to a network resource which is regularly backed up.

To temporarily disable backups, the user can uncheck **Enabled** field.

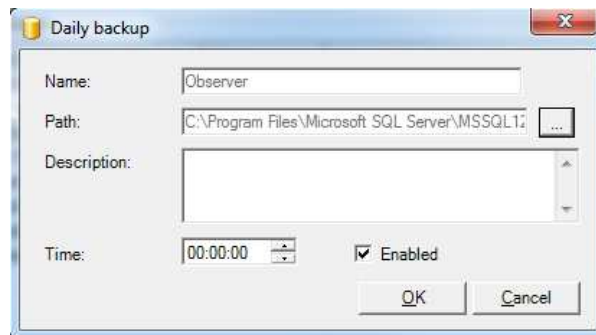


Figure 2 - 13.
Example of Daily Backup on a SQL Database.

Important- This feature is available only with SQL Server full version. It is not available with the SQL Server Express version which is included in the @ptitude Observer DVD.

Backup Now

It performs a backup of the selected database immediately.

Detach Database

Detaching a database is an effective way to disconnect a database from the SQL Server and move it to a different location. Detaching a database will free up the .ldf file and the .mdf file for the specific database and the user can freely copy, rename or move the files. If you intend to touch the database files, it is crucial that you first detach the database or else you might risk a danger of database becoming corrupted.

Shrink Database

Shrink database allows each file within the selected database(s) to be shrunk to remove unused pages and tries to minimize fragmentation. Both data and transaction log files can be shrunk. This activity occurs in the background and does not affect any user activity within the database. As @ptitude Observer database grows, this interface becomes more resourceful.

Run SQL Script

Run SQL script allows the user to execute advanced Structured Query Language scripts directly on the specific database.

Important - Use it with caution. Improper usage of this function may cause loss of data and database corruptions.

Appendix A

End User License Agreement

THIS END-USER LICENSE AGREEMENT (this “Agreement”) is entered into by and between SKF USA Inc. and/or SKF Condition Monitoring Center AB (hereinafter referred to collectively as the “Licensor”) and any person or business that executes this Agreement by clicking the “I agree” icon at the end of this Agreement or by accessing, using, or installing the Software (“Licensee” or “You”). Licensor and Licensee shall be referred to collectively in this Agreement as the Parties.

BY CLICKING THE ACCEPTANCE BUTTON OR ACCESSING, USING, OR INSTALLING THE SOFTWARE, OR ANY PART THEREOF, YOU EXPRESSLY AGREE TO BE BOUND BY ALL OF THE TERMS OF THIS AGREEMENT. IF YOU DO NOT AGREE TO ALL OF THE TERMS OF THIS AGREEMENT, THE BUTTON INDICATING NON-ACCEPTANCE MUST BE SELECTED, AND YOU MAY NOT ACCESS, USE, OR INSTALL ANY PART OF THE SOFTWARE.

1. DEFINITIONS

- (a) **Derivative Works.** The Term “Derivative Works” shall have the same meaning as set forth in the U.S. Copyright Act, as amended from time to time, in title 17 of the United States Code.
- (b) **Effective Date.** The term “Effective Date” shall mean the date on which Licensee assents to the terms of this Agreement by clicking the “I agree” button at the bottom of this Agreement.
- (c) **Intellectual Property Rights.** The term Intellectual Property Rights shall mean all rights arising or protectable under the copyright, trademark, patent, or trade secrets laws of the United States

or any other nation, including all rights associated with the protection of computer programs and/or source code.

- (d) **Person.** The term “Person” shall mean an individual, a partnership, a company, a corporation, an association, a joint stock company, a trust, a joint venture, an unincorporated organization, or a governmental entity (or any department, agency, or political subdivision thereof).
- (e) **Software.** The term “Software” shall mean the software application entitled Software for Wireless Monitoring System V/T, SKF @ptitude Analyst, SKF @ptitude Inspector, SKF @ptitude Observer, SKF @ptitude Decision Support or any other software within the SKF @ptitude family suite, which is an application developed, owned, marketed, and licensed by Licensor. The term Software shall include the object code of Software for Wireless Monitoring System V/T, SKF @ptitude Analyst, SKF @ptitude Inspector, SKF @ptitude Observer, SKF @ptitude Decision Support or any other object code within the SKF @ptitude family suite and any and all user manuals, or other technical documentation, authored by Licensor in connection with Software for Wireless Monitoring System V/T, SKF @ptitude Analyst, SKF @ptitude Inspector, SKF @ptitude Observer, SKF @ptitude Decision Support or any other software within the SKF @ptitude family. The term “Software” includes any corrections, bug fixes, enhancements, releases, updates, upgrades, or other modifications, including custom modifications, to Software for Wireless Monitoring System V/T, SKF @ptitude Analyst, SKF @ptitude Inspector, SKF @ptitude Observer, SKF @ptitude Decision Support or any other software within the SKF @ptitude family suite and any and all user manuals. The term Software also includes any supplemental, add-on, or plug-in

software code provided to Licensee in the course of receiving Product Support Plan services from Licensor. The term Software shall not be construed to include the source code for Software for Wireless Monitoring System V/T, SKF @ptitude Analyst, SKF @ptitude Inspector, SKF @ptitude Observer, SKF @ptitude Decision Support or any other software within the SKF @ptitude family suite.

2. LICENSE

(a) Grant of License. Licensor grants Licensee, pursuant to the terms and conditions of this Agreement, a non-exclusive, non-transferable, and revocable license to use the Software in strict accordance with the terms and conditions of this Agreement, including any concurrent use, network or other limitations set forth in subsection (b) below. All rights not specifically granted by Licensor under this Agreement are retained by Licensor and withheld from Licensee.

(b) Installation and Use Rights. Licensee shall use the Software only on its internal computer equipment, whether such equipment is owned, leased, or rented, at the Licensee's principal business office. The following paragraphs govern your installation and use rights with regard to the Software, depending on the type of license you have obtained from Licensor.

(i) If you obtained a stand-alone license of the Software, you may install one (1) copy of the Software on one (1) computer residing in your principal business office.

(ii) If you obtained a network license of the Software, you may install one (1) copy of the Software on as many networked clients

(workstations) as authorized by your network license, as set forth more particularly in the applicable purchase order or other ordering documents memorializing your license acquisition; provided, however, that all network clients (workstations) are connected to a single licensed database residing in your principal business office.

(iii) If you obtained a network license of the Software, you may connect to multiple licensed databases, you may install the database-dedicated clients up to the total number of networked clients acquired by you under the applicable purchase order or other ordering documents memorializing your license acquisition.

(c) Other Conditions of Use. Licensor understands and agrees that the Software works in conjunction and is compatible with database software licensed to you by Microsoft or Oracle. Upon installation of the Software, the Software may detect an installed database software application from Oracle or Microsoft, and if so, the Software will be fully installed. If no installed database software application from Oracle or Microsoft is detected, the Software will not install until such time as Licensee installs a valid and Software compatible copy of an Oracle database or a Microsoft SQL Server database and consents to the license terms of such database software application. If Licensee does not agree to the terms of the the Oracle database license or the Microsoft SQL Server license, or if the Licensee fails to install such database software, the Software will not work. Licensee is responsible for maintaining a valid database license

in accordance with the Oracle or Microsoft license agreement (which ever is applicable) at all times.

translate the Software or prepare Derivative Works based on the Software;

(d) Restrictions on Use. Licensee may use the Software only for its internal business purposes and on the identified equipment on which the Software was first installed or for which it is otherwise licensed; provided, however, that Licensee may temporarily use the Software on a back-up system in the event that the primary licensed system is inoperative or test system not used for production but solely for the purposes of testing the Software. Licensee may not use the Software for any other purpose. Licensee shall not:

- (i)** permit any parent, subsidiaries, affiliated entities or third parties to use the Software;
- (ii)** use the Software in the operation of a service bureau;
- (iii)** allow access to the Software through any workstations located outside of Licensee's principal business offices;
- (iv)** rent, resell, lease, timeshare or lend the Software to any Person;
- (v)** sublicense, assign, or transfer the Software or this license for the Software to any Person;
- (vi)** reproduce, distribute, or publicly display the Software;
- (vii)** make the Software accessible to any Person by any means, including posting on a web site or through other distribution mechanisms over the Internet;
- (viii)** reverse assemble, disassemble, reverse engineer, reverse compile, decompile, or otherwise

- (ix)** place, reproduce, or make available the Software on Licensee's computer network if Licensee is only authorized by this Agreement to operate the Software on a single workstation;
- (x)** exceed at any given point in time the total number of network clients authorized by the applicable purchase order or ordering document to use or access the Software;
- (xi)** edit or modify the Software except as expressly authorized by Licensor, including altering, deleting, or obscuring any proprietary rights notices embedded in or affixed to the Software;
- (xii)** use the Software in any manner that disparages Licensor, Microsoft, or Oracle, or use the Software in a way that infringes the Intellectual Property Rights of the foregoing parties; or
- (xiii)** use the Software in a manner that violates any federal, state, or local law, rule or regulation, or use the Software to violate the rights of any third party, or use the Software to promote pornography, hatred, or racism.

(e) Copies. Licensee, solely to enable it to use the Software, may make one archival copy of the Software's computer program, provided that the copy shall include Licensor's copyright and any other proprietary notices. The Software delivered by Licensor to Licensee and the archival copy shall be stored at

Licensee's principal business office. If you purchased a network license of the Software, you may install one additional copy of the Software on your network for the limited purpose of testing the Software's operation. Except for the limited reproduction rights set forth in this paragraph, Licensee shall have no other right to copy, in whole or in part, the Software. Any copy of the Software made by Licensee is the exclusive property of Licensor.

- (f) **Modifications.** Licensee agrees that only Licensor shall have the right to alter, maintain, enhance or otherwise modify the Software.
- (g) **Protection of Software.** Licensee agrees that it will take action by instruction, written agreement, or otherwise as appropriate with any person permitted access to the Software to enable Licensee to comply with its obligations hereunder. Licensee shall maintain records of the number and location of all copies of Software. Licensee shall not provide, permit access to or use of, or otherwise make available any Software in any form without Licensor's prior written agreement, except to Licensee's employees for purposes specifically authorized by this Agreement. Licensee understands and agrees that the source code for the Software is a valuable copyright and contains valuable trade secrets of Licensor. Licensee agrees not to discover or attempt to discover, or assist or permit any Person to discover or attempt to discover, by any means whatsoever the source code of the Software.
- (h) **Licensor's Audit Rights.** Licensor shall possess the right to audit Licensee's use of the Software to determine compliance with this Agreement (hereinafter referred to as "Licensor's Audit Rights"). Licensor's Audit Rights

shall be exercised in accordance with the following paragraphs:

- (i) **Notice of Audit.** Licensor shall provide Licensee with at least five (5) calendar days advance written notice of its intent to exercise the Licensor's Audit Rights.
- (ii) **Conduct of Audit.** The audit conducted by Licensor shall consist of a physical review of the computer hardware, software, and middleware operated by Licensee at its principal business office and any other office for which Licensor, in its sole and arbitrary discretion, deems an audit appropriate. Licensee shall provide Licensor with unrestricted access to its computer hardware, software, and middleware in connection with any audit conducted by Licensor.
- (iii) **Costs of Audit.** If Licensor's audit uncovers a violation of this Agreement by Licensee, Licensee shall pay all costs and expenses incurred by Licensor in exercising the Licensor Audit Rights, including, without limitation, all attorneys' fees and agent fees incurred by Licensor. If Licensor concludes that no violation of this License Agreement has occurred, Licensor shall bear all costs and expenses incurred in exercising the Licensor Audit Rights. If Licensee obstructs, restricts, or otherwise prevents Licensor from conducting a full and unrestricted audit, Licensee shall bear all costs and expenses, including attorneys' fees, incurred by Licensor in enforcing

this Section 2(h) before any court or judicial tribunal.

(iv) **Frequency of Audits.** Licensor's Audit Rights shall be exercised no more than two (2) times in any one calendar year.

(i) **Validity of Intellectual Property Rights.** In any action, dispute, controversy, or lawsuit arising out of or related to this Agreement, Licensee shall not contest the validity of Licensor's Intellectual Property Rights related to the Software. Licensee hereby agrees that it has had an opportunity to investigate the validity of Licensor's Intellectual Property Rights, and acknowledges that Licensor's Intellectual Property Rights related to the Software are valid and enforceable.

(j) **Material Terms and Conditions.** Licensee specifically agrees that each of the terms and conditions of this Section 2 are material and that failure of Licensee to comply with these terms and conditions shall constitute sufficient cause for Licensor to terminate this Agreement and the license granted hereunder immediately and without an opportunity to cure. This subsection 2(j) shall not be construed to preclude, or in any way effect, a finding of materiality with respect to any other provision of this Agreement.

3. LICENSE FEE

The applicable licensee fees will be set forth in the quote issued to Licensee by Licensor or otherwise established in the applicable purchase order or other ordering documents memorializing your license acquisition.

4. OWNERSHIP

(a) **Title.** Licensee understands and agrees that Licensor owns all Intellectual Property Rights related to the Software, including custom modifications to the

Software, whether made by Licensor or any third party. Licensee agrees that this Agreement effects a license, not a sale, of the Software and that the first sale doctrine, as codified in 17 U.S.C. § 109, does not apply to the transaction effected by this Agreement.

(b) **Transfers.** Under no circumstances shall Licensee sell, license, sublicense, publish, display, distribute, assign, or otherwise transfer (hereinafter referred to collectively as a "Transfer") to a third party the Software or any copy thereof, in whole or in part, without Licensor's prior written consent. Any Transfer effected in violation of this Section 4(b) shall be void ab initio and of no force or effect.

5. MAINTENANCE AND SUPPORT

Licensor may provide you with support services related to the Software called Product Support Plan ("PSP") services. Use of PSP is governed by the policies and programs described in the PSP literature or other material from Licensor's Product Support Department (hereinafter referred to as the "PSP Policies") that may be updated by Licensor from time to time. If you select and pay for PSP, the PSP Policies shall be specifically incorporated into this Agreement by this reference. Licensee acknowledges that Licensor may use any technical information provided by Licensee in the course of receiving PSP services for Licensor's business purposes, including for product support and development. Licensor will not utilize such technical information in a manner that identifies Licensee.

6. CONFIDENTIAL INFORMATION

Licensee agrees that the Software contains proprietary information, including trade secrets, know-how and confidential information (hereinafter referred to collectively as the "Confidential Information"), that is the exclusive property of Licensor. During the period this Agreement is in effect and at all times after its termination, Licensee

and its employees and agents shall maintain the confidentiality of the Confidential Information and shall not sell, license, publish, display, distribute, disclose or otherwise make available the Confidential Information to any Person nor use the Confidential Information except as authorized by this Agreement. Licensee shall not disclose the Confidential Information concerning the Software, including any flow charts, logic diagrams, user manuals and screens, to persons not an employee of Licensee without the prior written consent of Licensor.

7. LIMITED WARRANTIES

- (a)** Licensor warrants that the Software will perform substantially in accordance with its documentation for a period of 180 days from the date of shipment of the Software; provided, however, that the foregoing warranty only applies if: (i) Licensee makes Licensor aware of any defect with the Software within seven (7) days after the occurrence of the defect; (ii) Licensee has paid all amounts due under this Agreement; and (iii) Licensee has not breached any provision of this Agreement. The foregoing warranty does not apply in the event that: (i) the Software and documentation have been subject to misuse, neglect, alteration, modification, customization, improper installation, and/or unauthorized repair; (ii) the Software or any associated software or equipment have not been properly maintained in accordance with applicable specifications and industry standards or have been maintained in unsuitable environmental conditions; or (iii) Licensee has used the Software in conjunction with other equipment, hardware, software, or other technology that created an adverse impact on the operation, functioning, or performance of the Software.
- (b)** EXCEPT AS SET FORTH IN THIS SECTION 7 AND TO THE EXTENT PERMITTED BY APPLICABLE LAW, ALL

EXPRESS AND/OR IMPLIED WARRANTIES OR CONDITIONS, INCLUDING BUT NOT LIMITED TO IMPLIED WARRANTIES OR CONDITIONS OF MERCHANTABILITY, MERCHANTABILITY OF A COMPUTER PROGRAM, INFORMATIONAL CONTENT, SYSTEM INTEGRATION, FITNESS FOR A PARTICULAR PURPOSE, AND NON-INFRINGEMENT, ARE HEREBY DISCLAIMED AND EXCLUDED BY LICENSOR.

- (c)** The remedies set forth in this Section 7 are the exclusive remedies available to Licensee for any problem in the performance of the Software.

8. LIMITATIONS ON LIABILITY

- (a) Limitations and Exclusions.** IN NO EVENT WILL LICENSOR BE LIABLE TO LICENSEE FOR ANY DIRECT, INDIRECT, INCIDENTAL, CONSEQUENTIAL, PUNITIVE OR OTHER SPECIAL DAMAGES, LOST PROFITS, OR LOSS OF INFORMATION SUFFERED BY LICENSEE ARISING OUT OF OR RELATED TO THIS AGREEMENT OR THE USE OF THE SOFTWARE, FOR ALL CAUSES OF ACTION OF ANY KIND (INCLUDING TORT, CONTRACT, NEGLIGENCE, STRICT LIABILITY, BREACH OF WARRANTY OR CONDITION, AND STATUTORY) EVEN IF LICENSOR HAS BEEN ADVISED OF THE POSSIBILITY OF SUCH DAMAGES. THE PRECEDING EXCLUSION AND DISCLAIMER OF DAMAGES SHALL APPLY TO ALL CLAIMS MADE BY LICENSEE RELATED TO OR ARISING OUT OF LICENSEE's USE OF THE SOFTWARE, INCLUDING, BUT NOT LIMITED TO, CLAIMS ALLEGING THAT THE SOFTWARE, OR ANY COMPONENT THEREOF, FAILED OF ITS ESSENTIAL PURPOSE OR FAILED IN SOME OTHER RESPECT.

- (b) **Acknowledgment.** Licensee agrees that the limitations of liability and disclaimers of warranty set forth in this Agreement will apply regardless of whether Licensor has tendered delivery of the Software or Licensee has accepted the Software. Licensee acknowledges that Licensor has set its prices and entered into this Agreement in reliance on the disclaimers of warranty and the limitations and exclusions of liability set forth in this Agreement and that the same form an essential basis of the bargain between the Parties.

9. **TERM AND TERMINATION**

- (a) **Term.** This Agreement shall commence on the Effective Date and shall continue in existence until it is terminated in accordance with Section 9(b) below.
- (b) **Termination.** Licensor may terminate this Agreement and the license conveyed hereunder in the event that Licensee breaches any provision, term, condition, or limitation set forth in this Agreement, including but not limited to the license restrictions set forth in Section 2(d) of this Agreement.
- (c) **Effect of Termination.** Within ten (10) days after termination of this Agreement and the license granted hereunder, Licensee shall return to Licensor, at Licensee's expense, the Software and all copies thereof, and deliver to Licensor a certification, in writing signed by an officer of Licensee, that all copies of the Software have been returned to Licensor and that Licensee has discontinued its use of the Software.

10. **ASSIGNMENT**

Licensee shall not assign or otherwise transfer the Software or this Agreement to anyone, including any parent, subsidiaries, affiliated entities or third Parties, or as part of the sale of any portion of its business, or pursuant to any merger, consolidation or

reorganization, without Licensor's prior written consent. Any assignment or transfer effected in violation of this Section 10 shall be void ab initio and of no force or effect.

11. **FORCE MAJEURE**

Neither party shall be in default or otherwise liable for any delay in or failure of its performance under this Agreement if such delay or failure arises by any reason beyond its reasonable control, including any act of God, any acts of the common enemy, the elements, earthquakes, floods, fires, epidemics, riots, failures or delay in transportation or communications; provided, however, that lack of funds shall not be deemed to be a reason beyond a party's reasonable control. The Parties will promptly inform and consult with each other as to any of the above causes that in their judgment may or could be the cause of a delay in the performance of this Agreement.

12. **NOTICES**

All notices under this Agreement are to be delivered by depositing the notice in the mail, using registered mail, return receipt requested, to the party's last known principal business address or to any other address as the party may designate by providing notice. The notice shall be deemed delivered four (4) days after the notice's deposit in the mail, if such notice has been sent by registered mail.

13. **CHOICE OF LAW**

This Agreement (including all Exhibits), including its formation, execution, interpretation, and performance, and the rights and obligations of the Parties hereunder, shall be governed by and construed in accordance with the laws of the Commonwealth of Pennsylvania, without regard to any conflicts of law (or choice of law) principles thereof.

14. **CONSENT TO JURISDICTION**

In the event that either party initiates litigation relating to or arising out of this Agreement, Licensor and Licensee irrevocably submit to the exclusive

jurisdiction of the state or federal court in or for Philadelphia, Pennsylvania for the purposes of any suit, action or other proceeding relating to arising out of this Agreement or any transaction contemplated hereby or thereby (“Legal Proceedings”). Licensee further agree that service of any process, summons, notice, or document by U.S. registered mail to such Party’s respective address shall be effective service of process for any Legal Proceeding. Licensor and Licensee irrevocably and unconditionally waive any objection to personal jurisdiction and/or the laying of venue of any Legal Proceeding in the state or federal court in or for Philadelphia, Pennsylvania, and hereby further irrevocably and unconditionally agree not to plead, argue, or claim in any such court that any Legal Proceeding brought in any such court has been brought in an inconvenient forum and otherwise waive any and all objections to the forum.

15. EXPORT CONTROLS

Licensee shall not export or reexport, directly or indirectly, the Software without complying with the export controls imposed by the United States Export Administration Act of 1979, as amended (or any future U.S. export control legislation) and the regulations promulgated thereunder.

16. GOVERNMENT END USERS

If Licensee is acquiring the Software for or on behalf of a subdivision of the U.S. federal government, this Section 16 shall apply. The Software was developed completely at private expense, is existing computer software, is a trade secret for all purposes of the Freedom of Information Act, is “restricted computer software” and in all respects proprietary data belonging solely to Licensor, and all rights are reserved under the copyright laws of the United States. Use, duplication, or disclosure by the Government is subject to restricted rights as set forth in subparagraphs (a) through (d) of the Commercial Computer Software Restricted Rights clause at FAR 52.227-19, or for DoD

units, the restrictions as set forth in subparagraph (c)(1)(ii) of the Rights in Technical Data and Computer Software clause at DFARS 252.227-7013.

17. TRADEMARKS

Licensee agrees that SKF @ptitude Analyst, SKF @ptitude Inspector, SKF @ptitude Observer, SKF @ptitude Decision Support or any other software within the SKF @ptitude family suite and the trade dress, logos and other designations of source used by Licensor to identify the Software are trademarks or registered trademarks of Licensor. Licensee shall not use Licensor’s trademarks or service marks without the prior written consent of Licensor. If the Software contains any active links to web sites, you agree to maintain such active links and not redirect or modify them.

18. GENERAL PROVISIONS

(a) Complete Agreement. The Parties agree that this Agreement is the complete and exclusive statement of the agreement between the Parties, which supersedes and merges all prior proposals, understandings and all other agreements, oral or written, between the Parties relating to the use of the Software.

(b) Amendment. This Agreement may not be modified, altered or amended except by written instrument duly executed by both Parties. Any purchase orders or other ordering documents issued to Licensee by Licensor shall not have the effect of amending or modifying this Agreement, and shall only serve to memorialize the number of licenses or products ordered by Licensee. In the event of a conflict between the PSP Policies and this Agreement, the terms of this Agreement shall control.

(c) Waiver. The waiver or failure of either party to exercise in any respect any

right provided for in this Agreement shall not be deemed a waiver of any further right under this Agreement.

- (d) **Severability.** If any provision of this Agreement is invalid, illegal or unenforceable under any applicable statute or rule of law, it is to that extent to be deemed omitted. The remainder of the Agreement shall be valid and enforceable to the maximum extent possible.
- (e) **Read and Understood.** Each party acknowledges that it has read and understands this Agreement and agrees to be bound by its terms.
- (f) **Limitations Period.** No action arising under, or related to, this Agreement, may be brought by either party against the other more than two (2) years after the cause of action accrues, unless the cause of action involves death or personal injury.
- (g) **Attorneys' Fees.** In the event any litigation is brought by either party in connection with this Agreement, the prevailing party in such litigation will be entitled to recover from the other party all the costs, reasonable attorneys'

fees, and other expenses incurred by such prevailing party in the litigation.

- (h) **Authorized Representative.** The person installing or using the Software on behalf of Licensee represents and warrants that he or she is legally authorized to bind Licensee and commit Licensee to the terms of this Agreement.
- (i) **Injunctive Relief.** Licensee agrees that Licensor may suffer irreparable harm as a result of a violation of Sections 2, 4, 6, 10, 15, and 17 of this Agreement and that monetary damages in such event would be substantial and inadequate to compensate Licensor. Consequently, Licensor shall be entitled to seek and obtain, in addition to such other monetary relief as may be recoverable at law or in equity, such injunctive other equitable relief as may be necessary to restrain any threatened, continuing, or further breach by Licensee without showing or proving actual damages sustained by Licensor and without posting a bond.

CM-F0176 (Revision F, January 2011)