

## SKF Spherical Shim

The angular soft foot eliminator



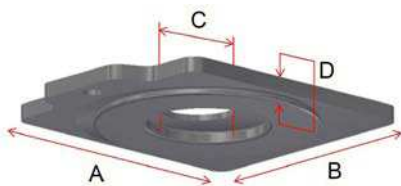
- Soft foot is one of the most prevalent conditions found in rotating equipment.
- Soft foot makes an alignment job time consuming.
- The SKF Spherical Shim eliminates soft foot and can be used in combination with traditional shims without a need for specific installation skills.

# NEW! SKF Spherical Shim



## Features & benefits:

- Optimal chocking
- Eliminates angular soft foot
- Angle compensation up to 2 degrees
- Can be used in combination with traditional shims
- Safe solution
- No shim cutting required anymore
- Suitable for bolt size M10-M42
- Other sizes on request
- No installation skills required
- Stainless steel solution



Material: Stainless Steel AISI 304

Spherical Shim type	A	B	C	D
SM SPS-A1	55	50	15	3,9
SM SPS-B1	75	70	23	5,3
SM SPS-C1	90	80	32	5,5
SM SPS-D1	125	105	44	7,0

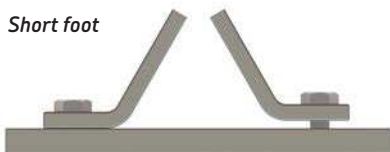
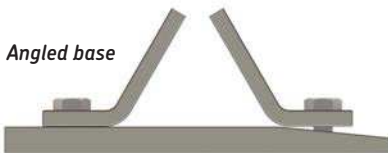
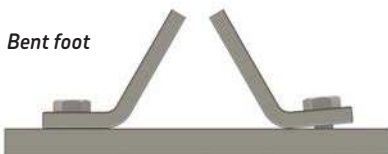
(all dimensions in mm)

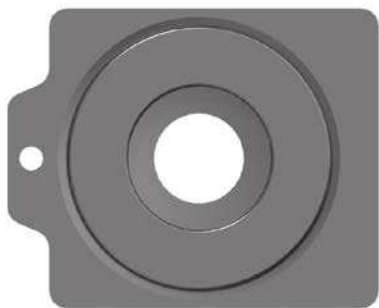
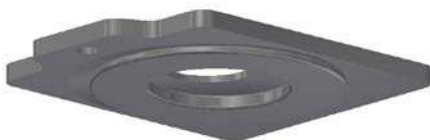
# Soft Foot

## What is “Soft Foot”?

Soft Foot is a condition whereby the mounting feet of a machine - a motor, pump, compressor, turbine or similar equipment - are not in the same plane and are not in proper contact with their mounting positions on the baseplate. It may be either an angular or parallel soft foot, but often it is a combination of the two.

## Different causes of “Soft Foot”:



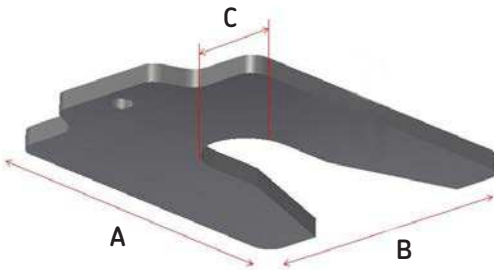


## Steelshim



### Features & benefits:

- Optimal chocking for parallel gaps
- Can be used in combination with Spherical Shim
- Safe solution
- Suitable for bolt size M10-M42
- No installation skills required
- Stainless steel solution



Material: Stainless Steel AISI 304 / AISI 301

Thicknesses: 0.05 / 0.1 / 0.2 / 0.4 / 0.5 / 0.7 / 1.0 / 2.0

Steelshim type	A	B	C
SM STS-A	55	50	15
SM STS-B	75	70	23
SM STS-C	90	80	32
SM STS-D	125	105	44

(all dimensions in mm)

## Related products



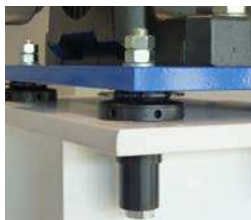
*SKF Shaft Alignment Tools*



*SKF spherical washers*



*SKF Vibracon chocks*



*SKF Vibracon low profile chock and spherical washer*

## Downloads/Contact details:



**vibracon@skf.com**

**www.vibracon.com**

© SKF is a registered trademark of the SKF Group.

© SKF Group 2016

The contents of this publication are the copyright of the publisher and may not be reproduced (even extracts) unless prior written permission is granted. Every care has been taken to ensure the accuracy of the information contained in this publication but no liability can be accepted for any loss or damage whether direct, indirect or consequential arising out of the use of the information contained herein.

**PUB 43/P2 16699 EN** · May 2016