



Service Guide

Fluid Evacuation System

Description

The Alemite model 8595-C Fluid Evacuation System provides a clean, safe way to evacuate waste fluids.

The system features a corrosion resistant aluminum double diaphragm pump that creates a powerful suction to evacuate waste fluids and transfer them through an enclosed system to a remote storage tank.

Model 8595-C includes a non U.L. listed pump for transferring non-flammable fluids such as used motor oil, coolant or windshield cleaner.

The system can evacuate used fluids from rolling drain pans, portable oil drain containers and differentials and transaxles.

The pump is air operated and can be mounted on any convenient wall surface.

One basic system can be connected with additional hardware to serve multiple service centers.

Optional Kits

For Model 8595-C, one optional kit is offered for complete system installation. Pump Wall Bracket Kit 343283 facilitates the mounting of the diaphragm pump to a wall or to a pole (with special U-bolts not provided). Wall Bracket 343283 is specially designed with hooks for

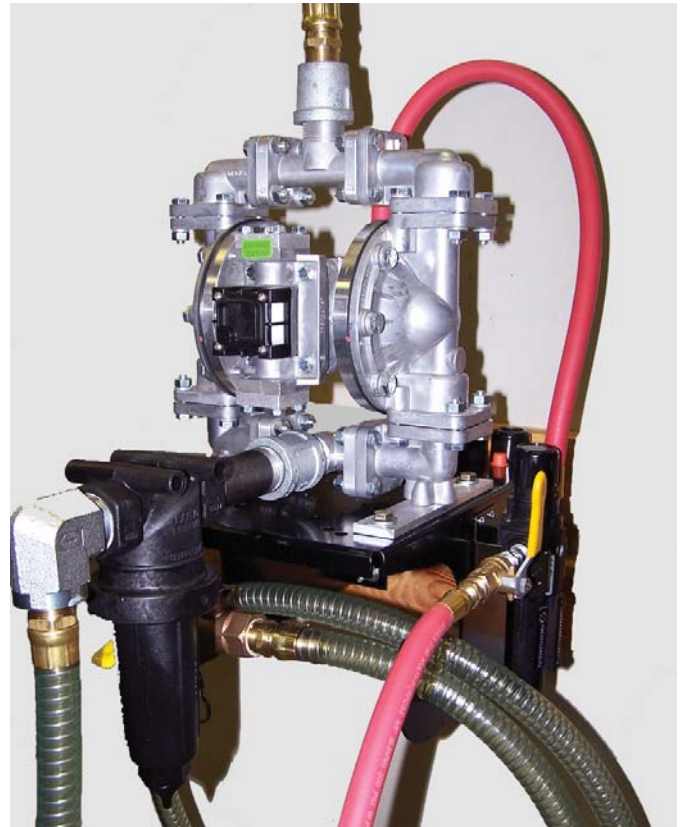


Figure 1 Fluid Evacuation Kit Model 8595-C with optional Kit 343276

hanging the suction hose when not in use. The pump wall bracket is predrilled to facilitate installation of 343280 Filter/Regulator on its side using 343284 FRL Wall Bracket Kit included with the Diaphragm Pump Evacuation Kit. (See Fig 1 for an example).

Alemite, LLC

167 Roweland Drive, Johnson City, Tennessee 37601

www.alemite.com

Copyright © 2012 by Alemite, LLC

This document contains confidential information that is the property of Alemite, LLC and is not to be copied, used, or disclosed to others without express written permission.

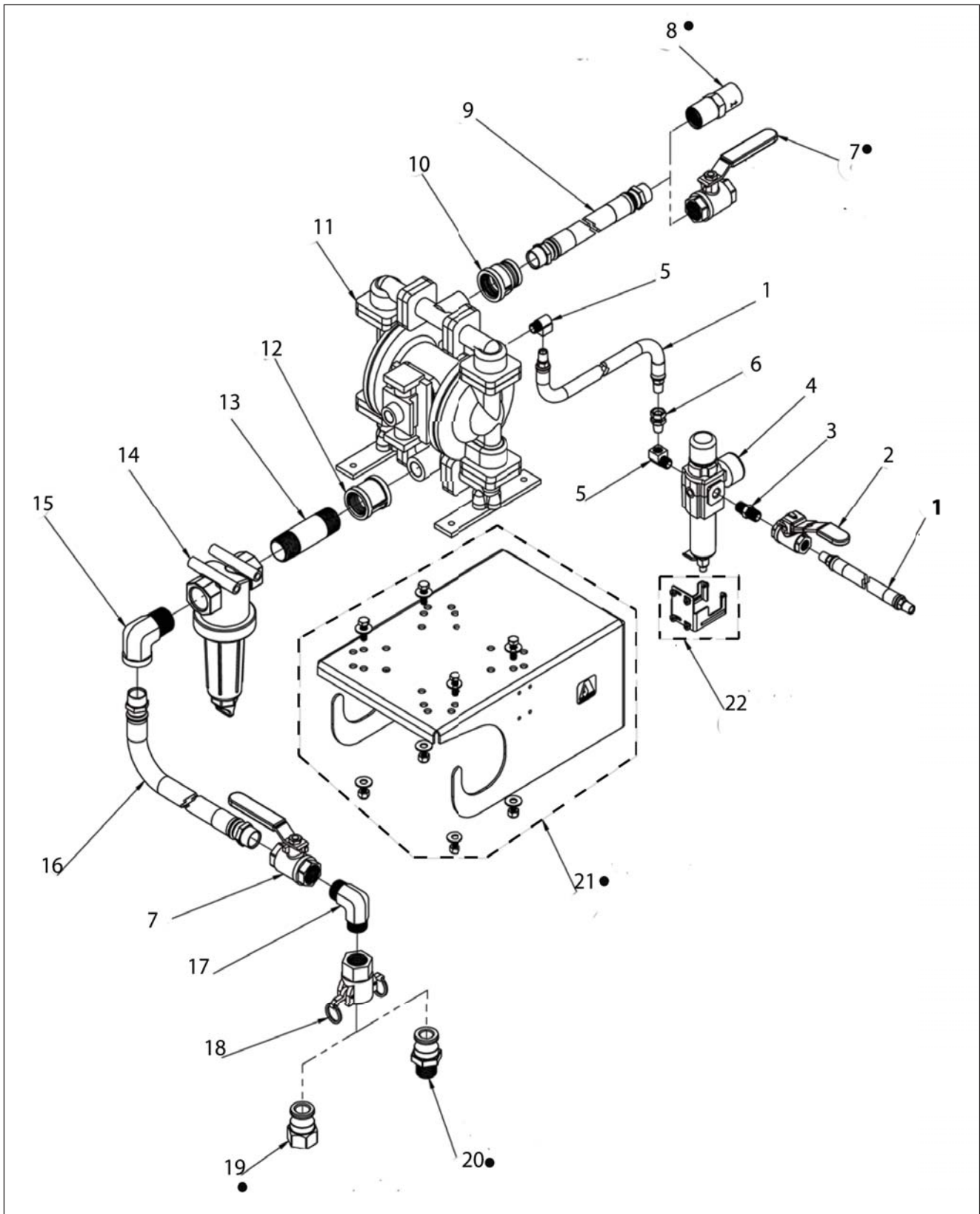


Figure 2 Fluid Evacuation Kit - exploded view

Item No.	Part No.	Description	Qty	Notes	Numeric Order Part # (Item #)
1	317803-2	Hose, Air Line	2		1000-44 (6)
2	387841	Valve, Ball 1/4 NPT Full Port	1		8322-A (11)
3	327033	Nipple, Hex 1/4 X 1/4 NPTF	1		172265-9 (13)
4	343280	Filter/Regulator , 1/4"	1		317803-2 (1)
5	339528	Elbow, 1/4 X 1/4 NPTF	2		327033 (3)
6	1000-44	Adaptor, Union	1		338564 (7)
7	338564	Valve, Ball 3/4" NPTF	2	• One valve optional	339528 (5)
8	343274	Valve, Check - 3/4"	1	•	343261 (19)
9	343268-4	Hose, Delivery	1		343262 (20)
10	343277	Coupler, Reducing	1		343263 (18)
11	8322-A	Pump, Diaphragm 1/2"	1		343264 (14)
12	343278	Coupling, 1 NPTF	1		343265 (17)
13	172265-9	Nipple, 1" NPTF	1		343266-10 (16)
14	343264	T-Strainer	1		343267 (15)
15	343267	Elbow, 3/4 F X 1 M NPTF	1		343268-4 (9)
16	343266-10	Hose, Suction			343274 (8)
17	343265	Elbow, 3/4 (M) X 3/4 (M) NPTF	1		343277 (10)
18	343263	Coupler, Camlock	1		343278 (12)
19	343261	Connector, Camlock	1	•	343280 (4)
20	343262	Connector, Camlock	1	•	343283 (21)
21	343283	Kit, Wall Bracket (Pump)	1	•	343284 (22)
22	343284	Kit, Wall Bracket (FRL)	1		387841 (2)

Legend:

Part numbers left blank (or in italics) are not serviced separately.

- designates kit items that are optional and must be purchased separately.

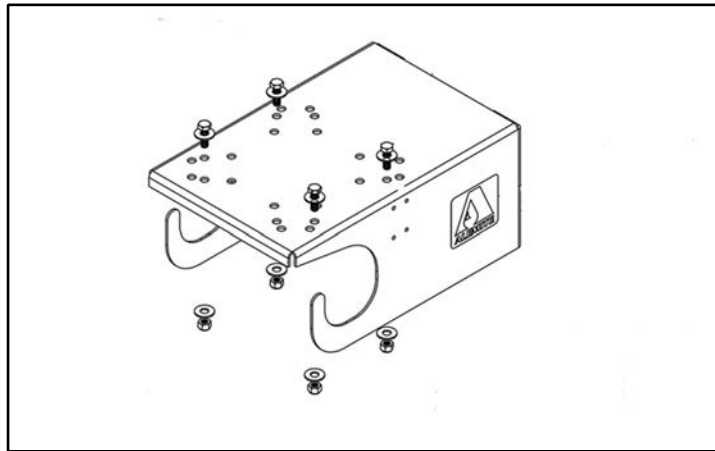


Figure 3 *KIT, WALL BRACKET (PUMP) 343283*

Part No.	Description	Qty
343260	Bracket, Wall Mount	1
	Nut, Elastic Stop 5/16-18	4
	Washer, Plain Flat (5/16)	8
	Screw, Hex Head Cap (5/16-18)	4

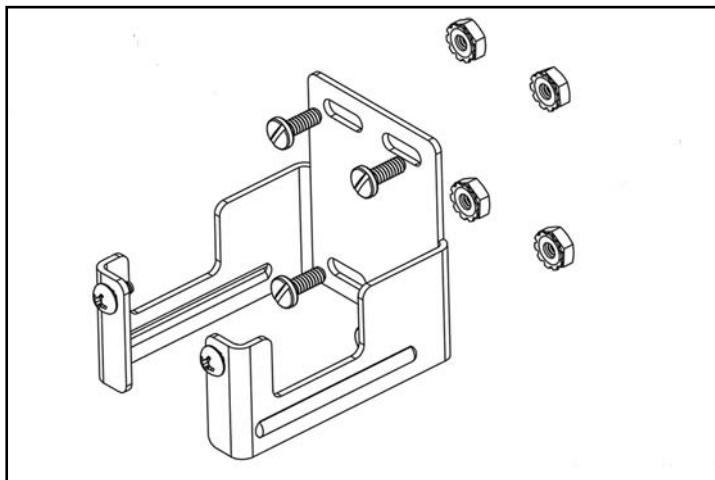


Figure 4 *KIT, WALL BRACKET (FRL) 343284*

Part No.	Description	Qty
	Bracket	1
	Screw, Pan Slotted 6-32 X 3/8	4
	Nut, Hex 6-32 w/ext Lockwasher	4

Installation

Depending on the type of fluid to be evacuated, the Fluid Evacuation System installation and use must be in accordance with the Flammable and Combustible Liquids Code (NFPA 30) and Automotive and Marine Service Station Code (NFPA 30A) and must comply with all local state and Federal codes.

Also, the United States Government safety standards have been adopted under the Occupational Safety and Health Act. These standards should be consulted, particularly the General Standards, Part 1910, and the Construction Standard, Part 1926.

Owner/Operator Responsibility

It is the owner/operator responsibility to properly use and maintain this equipment.

The instructions and warnings contained in this manual shall be read and understood by the owner/operator prior to operating this equipment.

If an owner/operator does not understand English, the contents of this manual shall be explained in the operator's native language to assure the owner/operator comprehends.

It is the owners/operators responsibility to maintain the legibility of all warning and instruction labels.

The owner/operator shall retain this manual for future reference to important warnings and installation instructions.

CAUTION

Grounding

To reduce the risk of static electrical parking, the system must be grounded. Refer to your local, state, federal electrical codes for detailed grounding instructions that are applicable to your area and type of equipment.



WARNING

Failure to heed the following warnings including failure to ground equipment, misuse, over pressuring, modifying parts, evacuating incompatible fluids, or using worn or damaged parts, may result in equipment damage and/or serious personal injury, fire, explosion, or property damage.

- Make sure the pump and all other equipment used or located in the pumping area are grounded.
- Do not use the system if any static sparking or electrical shock occurs. Stop the evacuation immediately and do not use the system until the problem is corrected.
- Do not exceed the stated maximum working pressure of the pump or of the lowest rated component in your system.
- Do not alter or modify any part of this equipment.
- Do not attempt to repair or disassemble the equipment while the system is operating.
- Make sure all connections are securely tightened before using this equipment.
- Always read and follow the fluid manufacturer's recommendations regarding fluid compatibility, and the use of protective clothing and equipment.
- Check all equipment regularly and repair or replace worn or damaged parts immediately.
- Never place your hand on or near the pump suction inlet.

