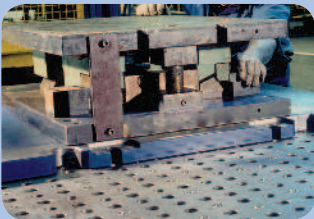


# Material handling ball transfer units from SKF



## Common applications

- Conveyors and assembly lines
- Air cargo operations
- Tool transfer stations



Heavy duty transfer table



Ball transfer table



Cargo dolly trailer

Ball transfer units from SKF are designed specifically for material handling applications. To find out how ball transfer units can help you attain maximum efficiency and smooth running, contact your SKF representative.

## User benefits

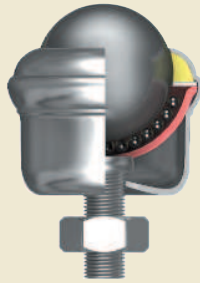
- Designed for harsh environments
- Heavy duty units designed for high load capacity
- Most designs include dirt exit holes for smooth operation and longer life
- Low friction, multi-directional movement
- Ease of accurate placement
- Local inventory for quick delivery

## Product features

- Heavy duty construction
- Product line offers load capacity range from several pounds to two tons
- Available in stainless steel
- Recirculating ball feature allows for use with ball in up or down position in select units
- Spring loaded units available
- Available in base, stud or flange mounts

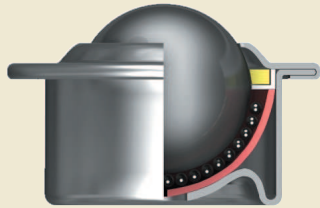


## Highlighted ball transfer unit styles for material handling applications



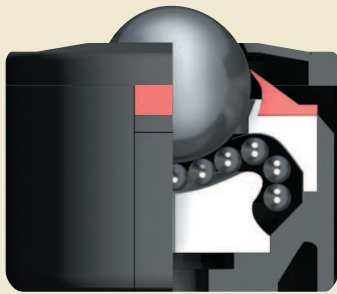
### Stud mount (Bolt fixing) units

Designed for faster assembly. Installs on any plate thickness. Available in metric or standard thread sizes. Available in ball types 13, 14, 15 & 16.



### Euro (Flange) units

Designed for drop-in installation. Can be installed with fixing clips, pop rivets or screws. A variety of fixing clips are sold separately. Felt seals are standard. Available in ball types 13, 14, 15 & 16.



### Hi-tech units

Design incorporates double sealing for excluding debris from the bearings. The top cover seal removes larger particles and the inner knife edge scraper seal skims liquid, paste, fine dust, etc. off the large ball and expels it through side vents. A dirt exit hole can also be incorporated. Available in ball types 13 and 15.

## Ball transfer installation for SKF Euro units.



Insert CL-14 fixing clip into seating hole.



Insert ball unit into seating hole. The CL-14 clip will increase the ball height slightly.



Secure ball unit in place with installation tool. Tool available via special order.

### Ball type material

Type	Load ball	Support balls	Housing
13	Carbon steel 60-66RC	Carbon steel 60-66RC	Ferrous steel Bright zinc plated
14	Nylon 66	Carbon chrome 60-66	Ferrous steel Bright zinc plated
15	Stainless steel AISI 304 52-58RC	Stainless steel AISI 420 52-58RC	Stainless steel AISI 303/AISI 304 self color
16	Stainless steel AISI 420 52-58RC	Stainless steel AISI 420 52-58RC	Ferrous steel Bright zinc plated



© SKF is a registered trademark of SKF USA Inc. All other trademarks are property of their respective owners.

The contents of this publication are the copyright of the publisher and may not be reproduced (even extracts) unless prior written permission is granted. Every care has been taken to ensure the accuracy of the information contained in this publication but no liability can be accepted for any loss or damage whether direct, indirect or consequential arising out of the use of the information contained herein.

© 2013 SKF USA Inc.

Publication 940-602

(500/AN 1/2013)

Version 1/2013

Printed in USA

Certain image(s) used under license from Shutterstock.com

