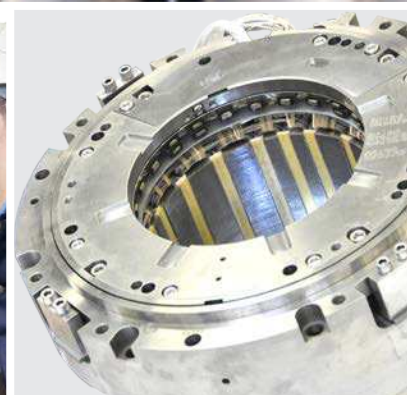
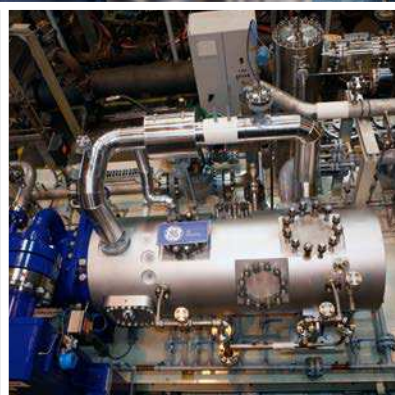


# Run your business without interruption.

SKF S2M Magnetic Bearings maintenance and support services



# Avoid critical equipment failure and loss of production.

You can count on the wide range of services designed by the SKF S2M Magnetic Bearings service team to improve the reliability of your critical rotating equipment and to reduce downtime.

Our services include: remote support; regular on-site checks; planned maintenance and during any unplanned shutdowns we can support you to get your equipment back to production as quickly as possible. Assistance can be provided on a contract or on-demand basis.

The SKF S2M Magnetic Bearings service team has unparalleled experience from over 1,100 oil and gas installations. Our worldwide network provides local dedicated expert engineers to your site so you can gain knowledge, share experiences and expertise, and secure the SKF S2M Magnetic Bearing system in your rotating equipment.



More reliability



Lower life cycle cost



Integrated monitoring



Long term partner



### Spare parts

In the event of unplanned maintenance, SKF offers a standard spare parts program that ensures spare parts are readily available for delivery to your site. SKF can also offer a customized spare parts program to minimize your equipment downtime.



### Maintenance solutions

SKF offers tailored maintenance programs on contract or on-demand to help you reduce maintenance costs and improve reliability. Preventative maintenance and audit programs are offered to uncover potential issues early on, leading to corrective actions to make sure your SKF S2M Magnetic Bearings are always in top operating condition.



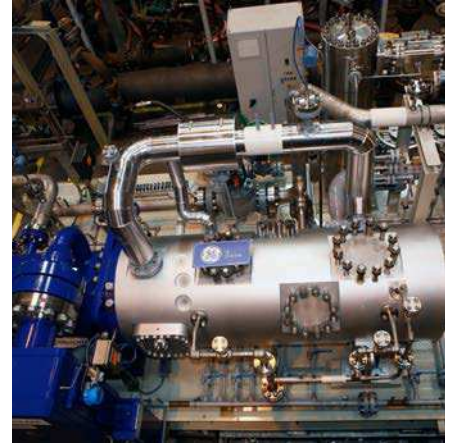
### Field service and hotline

Our field service team operates worldwide from our locations in France, Canada, China, the United States, Russia, Japan, and the United Arab Emirates. From all of these locations, our expert field service engineers can be quickly dispatched to your facility or can provide remote support through our service hotline.



### Customized training

SKF offers a wide range of certified training programs, each one led by experienced SKF engineers. These are located either at your site or at a fully equipped SKF facility – whatever best fits your needs. Courses with practical cases can be customized. They cover the operation and maintenance of the magnetic bearings systems and address how to take full advantage of their powerful HMI. They provide the end-user team with the necessary knowledge to keep the rotating equipment running safely and reliably which will maximize uptime.



### Upgrades

We can help you identify opportunities to upgrade your current magnetic bearing mechanical and electronic components. We use the latest technology to accommodate changes in the rotating equipment operation, extend its lifetime or add a new range of capabilities. Examples include implementing the upstream SKF S2M Magnetic Bearing technology in sour gas cases or retrofitting analog electronics to the latest digital control cabinets.



### Condition monitoring

SKF @pitute Observer condition monitoring solutions enable advanced tracking and diagnostic analysis keeping you informed about potential performance issues in real time. The condition monitoring system can be connected with your plant system and/or cloud based platforms. An optional SKF monitoring and analysis service is also available. We will work with you to find a monitoring solution to make sure your equipment is always operating at the highest performance level.

## Dedicated service and support worldwide

The E300V2 control cabinet for SKF S2M Magnetic Bearings gives operators unprecedented freedom to conduct their own monitoring and servicing functions. Should operators ever require on-site assistance, SKF S2M Magnetic Bearing systems are backed by a network of dedicated field engineers serving every major oil and gas region worldwide.

Local specialists are available in:

- France
- Canada
- China
- The United States
- Russia
- Japan
- The United Arab Emirates

Customer service: [Customer\\_service@S2M.fr](mailto:Customer_service@S2M.fr)

Phone: +33 2 32 64 33 01



[skf.com](http://skf.com)

© SKF is a registered trademarks of the SKF Group.

© SKF Group 2017

The contents of this publication are the copyright of the publisher and may not be reproduced (even extracts) unless prior written permission is granted. Every care has been taken to ensure the accuracy of the information contained in this publication but no liability can be accepted for any loss or damage whether direct, indirect or consequential arising out of the use of the information contained herein.

PUB MT/S2 17195 EN · February 2017

Certain image(s) used under license from Shutterstock.com.