



Mounted unit nomenclature guide

P2BL 207 WF W64

Housing style

F2B	Flange, two-bolt, cast iron
F4B	Flange, four-bolt, cast iron
F4BM	Flange, four-bolt, cast iron, medium duty
P2B	Pillow block, cast iron
P2BL	Pillow block, cast iron, low center height
P2BM	Pillow block, cast iron, medium duty
P2BX	Pillow block, pressed steel
P2BT	Tapped-base pillow block, threaded base, cast iron
WSTU	Wide slot take-up, cast iron
ECY	End cover – order separately

Reference

FYT
FY
FYM
SY
SYH
SYM
S
SYF
TU
ECY

Shaft size

Inch
 First digit: number of inches
 Second and third digits: number of sixteenths of an inch
Example: 207 indicates 2⁷/₁₆ (unit)

Metric
 First two digits: number of millimeters
Example: 25M indicates 25mm (or millimeters)

S 1¹/₄" bore, fitted into a housing that usually accommodates a 1³/₁₆" insert bearing

Suffix

Insert bearing selections (WF W64):

TF Set screw lock, seals and flingers, wide inner ring, YAR series insert

RM Set screw lock, seals, narrow inner ring, YAT series insert

FM Eccentric lock, seals, narrow inner ring, YET series insert

WF Eccentric lock, seals and flingers, wide inner ring, YEL series insert

LF ConCentra™ lock, seals and flingers, wide inner ring, YSP series insert

Additional options (WF W64):

VA228 High temperature bearings with graphite cage

VA201 High temperature bearings with graphite paste

W64 Solid Oil

-AH Air handling unit – anti rotation pin



CPB 103 ZM

Housing style

CPB	Composite pillow block
SPB	Cast stainless steel pillow block
C2F	Composite 2-bolt flange
S2F	Cast stainless steel 2-bolt flange
C4F	Composite 4-bolt flange
S4F	Cast stainless steel 4-bolt flange
CTB	Composite tapped-base pillow block
STB	Cast stainless steel tapped-base pillow block
CBF	Composite 3-bolt bracket flange
CTN	Composite narrow-slot take-up
CTW	Composite wide-slot take-up
ECWM	End cover – order separately

Shaft size

Inch
 First digit: number of inches
 Second and third digits: number of sixteenths of an inch
Example: 103 indicates 1³/₁₆ (unit)

Metric
 First two digits: number of millimeters
Example: 25 indicates 25 millimeters

Insert bearing selections

All insert bearings are fitted with heavy duty seals with rubberized flingers.

L Wide inner ring, eccentric lock,

SS Stainless wide inner ring, set screw lock, flinger, RRH series insert

ZM ZMaRC® coated, wide inner ring, set screw lock, RRZ series insert

G Relubricatable bearing unit

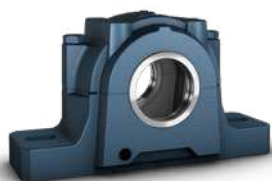
HT High Temperature plane bearing

SB Submersible plane bearing

R 1¹/₄" bore, fitted into a housing that usually accommodates a 1³/₁₆" insert bearing

W64 Solid Oil





Split pillow block unit housings

F SAF D 22634 TA

Prefix	Housing style	Material
F Four bolt base (when optional)	S Standard pillow block	- Cast iron (standard)
	D Heavy duty series	D Ductile iron
	A Inch dimensions	S Cast steel
	F Triple ring seal	

Suffix	
T	Taconite contact seal
TV	Taconite V-ring seal
TA or TVA	Taconite seal with button head grease fitting
TB or TVB	Taconite seal with giant button head grease fitting
Y	One end closed (i.e., supplied with end plug)
-11	Four-bolt base (when optional / cast steel SAFS only)
/VZ###	Special feature / modification
-##	Special feature / modification
TLC	PosiTrac Plus™ seal

Housing designation

Cast-iron	Cast-steel	Basic bearing series	Mounting method
13(00)		13(00)	Cylindrical
15(00)		12(00)K	Adapter
16(00)		13(00)K	Adapter
222(00)	222(00)	222(00) CC/W33	Cylindrical
223(00)	223(00)	223(00) CC/W33	Cylindrical
225(00)	225(00)	222(00) CCK33	Adapter
226(00)	226(00)	223(00) CCK33	Adapter
230(00)KA		230(00) CCK33	Adapter
C22(00)		C22(00)	Cylindrical
C23(00)		C23(00)	Cylindrical
C25(00)		C22(00)K	Adapter
C26(00)		C23(00)K	Adapter
C30(00)KA		C30(00)K	Adapter

Series designation

- 100 Series** Light-duty
- 01 Series** Medium-duty
- 01E & 02E Series** – Enhanced-duty
- 02 Series** Heavy-duty
- 03 Series** Extra-heavy-duty

Configuration identifier

- BCP** Bearing, cartridge and pedestal
- BCF** Bearing, cartridge and flange
- BCSAFC** Bearing, cartridge and SAF pedestal

01 BCP 415 GR AT

Shaft size

- Inch** Last two digits represent 16ths of an inch
For example: 415 = 4¹⁵/₁₆"
- Metric** 120M would represent 120mm, 130M would represent 130mm
Standard size range from 1³/₁₆" (35mm) up to 24" (600mm)
Over 24" (600mm) are made to order

Seal type

- AT** Aluminum triple labyrinth seal
- F** Felt seal
- SRS RP** SRS seal with retaining plate – operates submerged up to a depth of 30 meters

Bearing type

- EX** Expansion type
- GR** Fixed type

