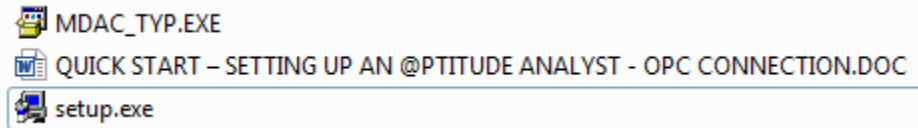


SKF @ptitude Analyst OPC Connect Installation Instructions

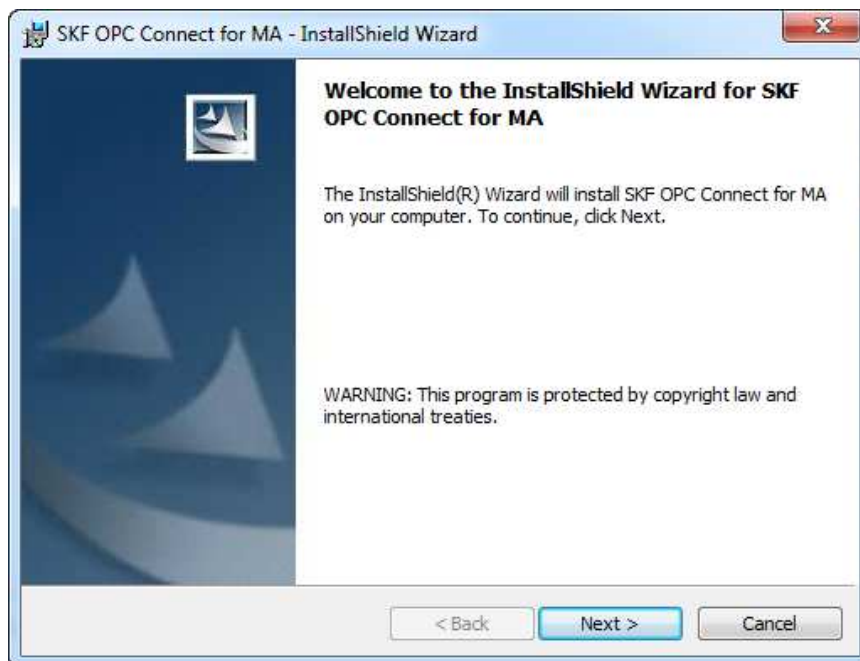
Upon entering your password, three files are extracted to your computer:

- Setup.exe (the installer)
- MDAC_TYP.EXE (used for older systems to provide support in reading Microsoft Access databases)
- The Quick Start guide



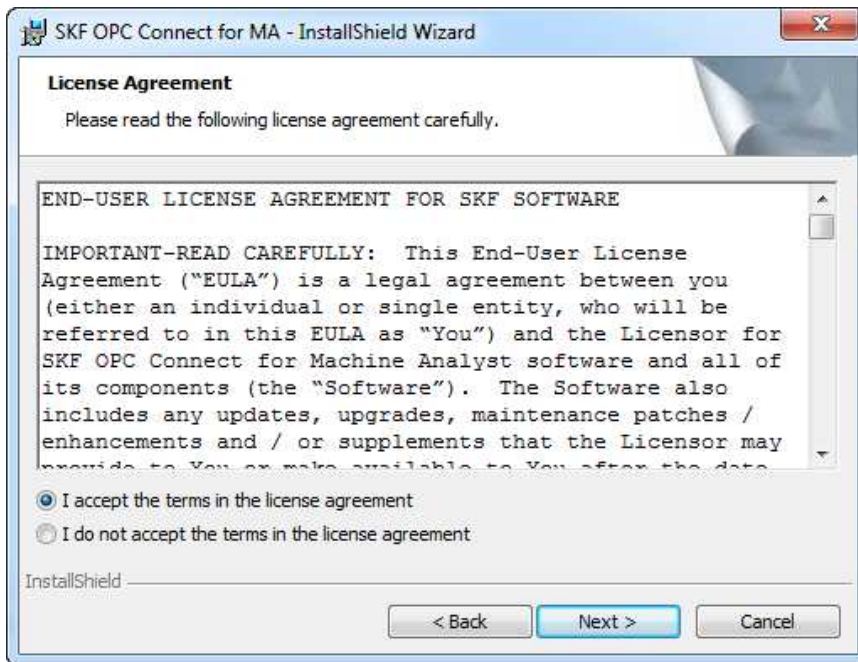
Extracted Files.

- Double-click **Setup.exe** to launch the InstallShield Wizard.



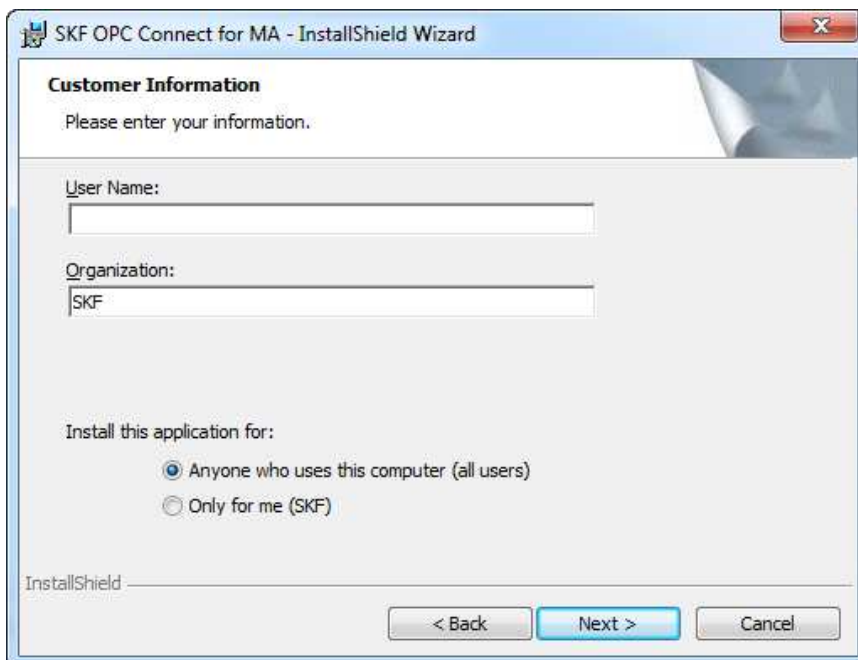
Welcome Screen.

- On the Welcome screen, click **Next** to continue to the License Agreement screen.



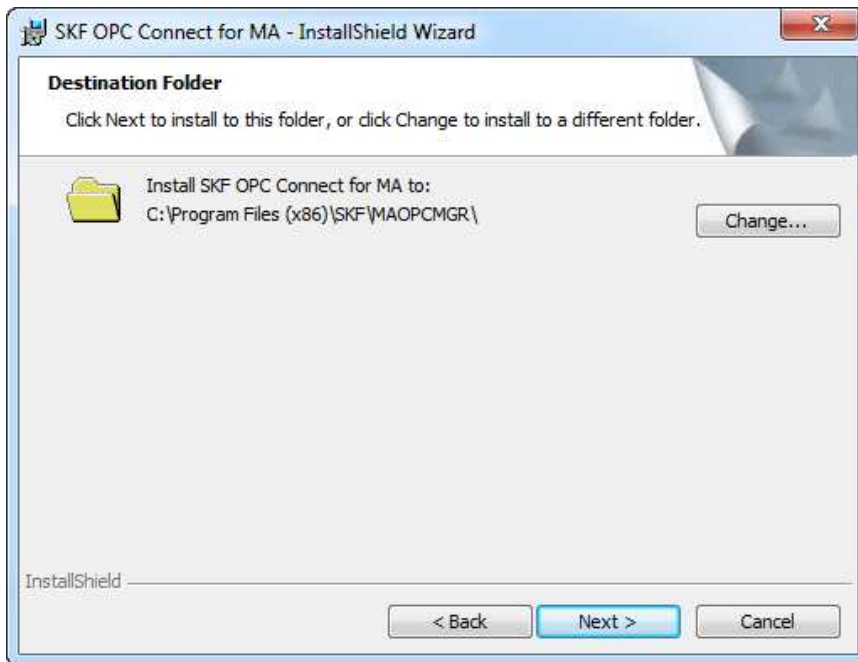
License Agreement Screen.

- Review the License Agreement information on the screen. Accept the terms, and then click **Next** to proceed to the Customer Information screen.



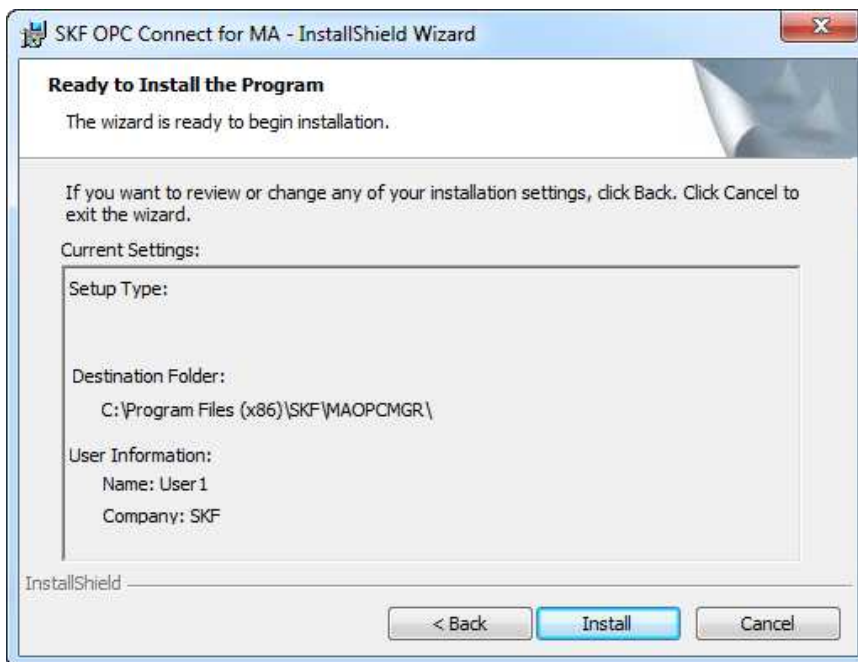
Customer Information Screen.

- Enter the **User Name**.
- Select the installation type (all users or only for me).
- Click **Next** to proceed to the Destination Folder screen.



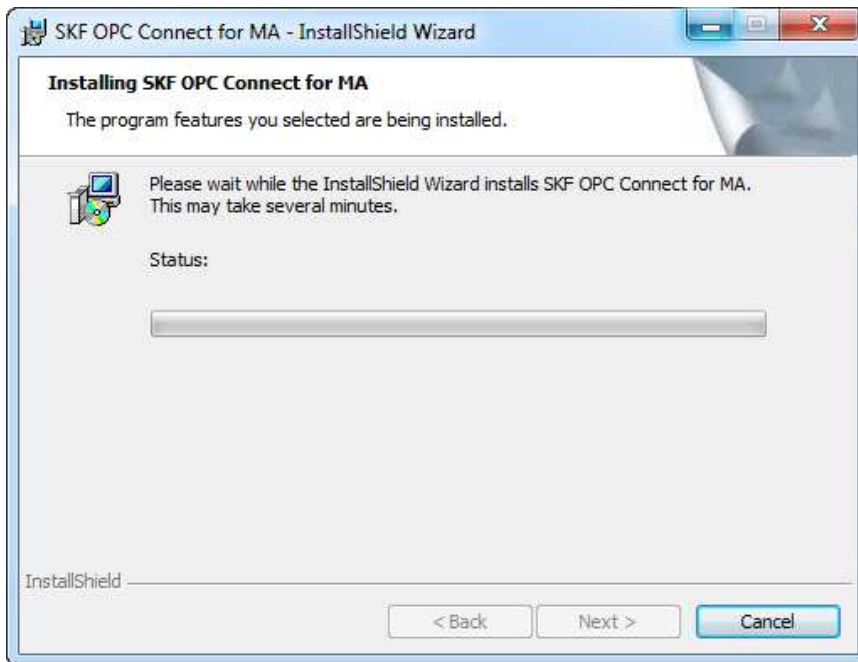
Destination Folder Screen.

- Accept the default destination folder or click **Change** to browse to another folder.
- Click **Next** to proceed to the Ready to Install the Program screen.



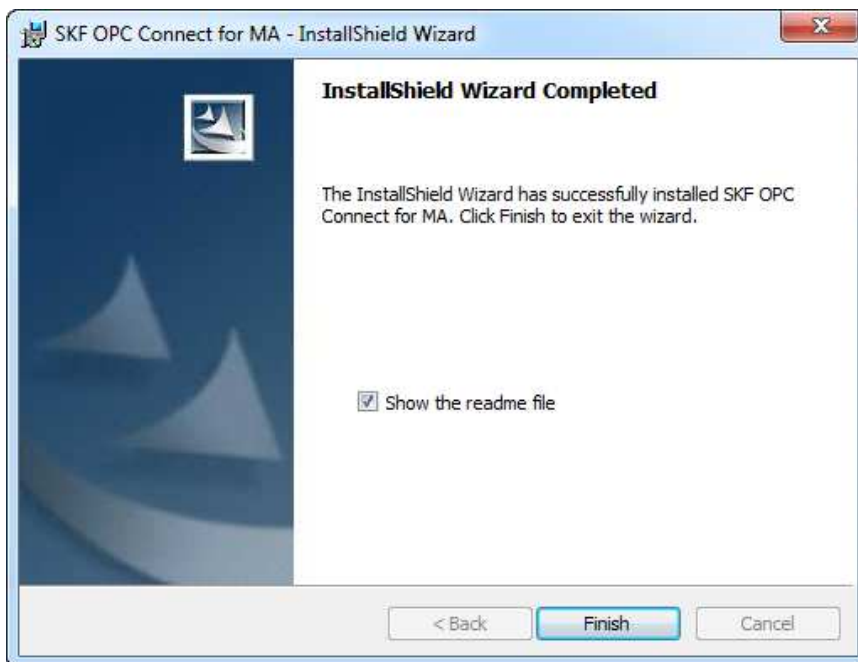
Ready to Install the Program Screen.

- Click **Install** to begin installing SKF OPC Connect.



Installing Screen.

- The installation is initiated and the **Status** bar indicates the progress. When the installation is complete, the **InstallShield Wizard Completed** screen displays.



InstallShield Wizard Completed.

Leave the **Show the readme file** check box enabled if you want to open the readme file, which contains important information related to your installation.

- Click **Finish** to exit the wizard.