

# @ptitude Observer Watchdog Card

Part No. 32087600  
Revision B

---

## Installation Guide

---

Copyright © 2009 by SKF Reliability Systems  
All rights reserved.  
Aurorum 30, 977 75 Luleå  
Sweden  
Telephone: +46 (0) 920 758 00, Fax: +46 (0) 920 134 40



## SKF Reliability Systems

SKF Condition Monitoring Center  
Aurorum 30  
977 75 Luleå  
Sweden  
Telephone +46 (0) 920 758 00  
FAX +46 (0) 920 134 40

For technical support, contact:

TSG-EMEA@skf.com

or

TSG-Americas@skf.com for customers in North and South  
America.

Visit us at our web site  
[www.skf.com/cm](http://www.skf.com/cm)

SKF Patents include: #US05854553, #US05845230,  
#US06489884, #US05679900, #US04768380,  
#US06199422, #US05992237, #US06202491,  
#US06513386, #US06275781, #US06633822,  
#US06006164, #US2003\_0178515A1, #US6,789,025,  
#US6,789,360, #WO\_03\_048714A1  
® SKF is a registered trademark of the SKF Group  
011807kf

# Table of Contents

<b>Watchdog card</b>	<b>1 - 4</b>
Overview .....	1 - 4
Installation of Card Revision 3.X .....	1 - 4
Installation of Card Revision 2.X .....	1 - 5
Installation of Driver .....	1 - 6
Installation of Program Components .....	1 - 8

# Watchdog card

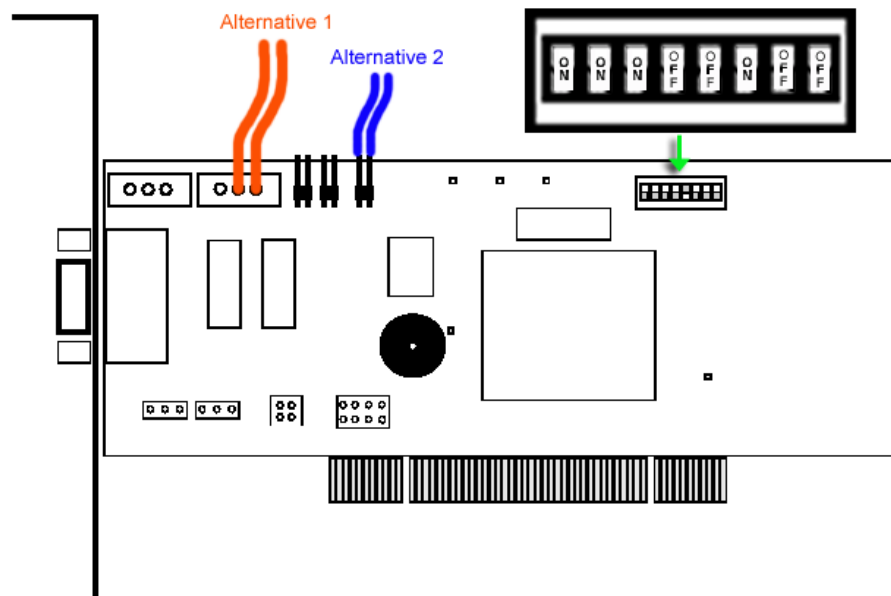
## Overview

The *@ptitude Observer Monitor* is an on-line device monitoring system which is a critical asset. This computer needs high uptime as long as possible. Sometimes the operating system can hang and a reboot is required. Rebooting can be performed manually or automatically. To be able to reboot automatically a watchdog card must be installed in the *@ptitude Observer Monitor* computer. This watchdog card generates a reset pulse if the *@ptitude Observer Monitor* software should stop working.

## Installation of Card Revision 3.X

The watchdog card shall be installed in an unused PCI socket in the *@ptitude Observer Monitor*. Follow the instructions below in order to install the card.

1. Set the dip switches 4, 5, 7 and 8 to OFF and all the others to ON (1, 2, 3 and 6). This gives a timeout of 17.9 minutes.
2. Attach the loose wires from the cable that is delivered with the card according to the figure below.

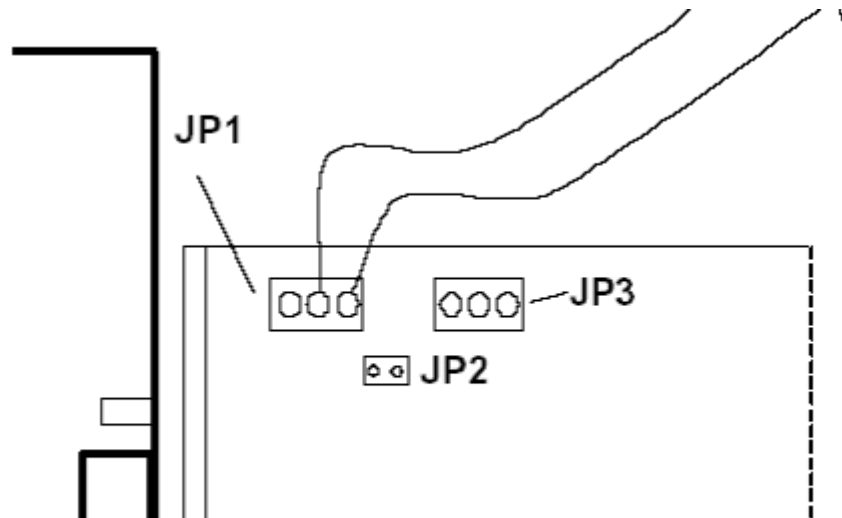


3. Install the card in a free PCI socket.
4. Unplug the ATX cable from the motherboard and install the cable that follows with the card between the motherboard and the loose socket.

## Installation of Card Revision 2.X

The watchdog card shall be installed in an unused PCI socket in the *@ptitude Observer Monitor*. Follow the instructions below in order to install the card.

1. Set the DIP switches 4, 5, 7 and 8 to OFF and the others to ON (this gives a timeout of 17,9 minutes).
2. Attach the loose wires from the cable that is delivered with the card as the figure below.



3. Install the card in an unused PCI socket.
4. Unplug the cable for current feed from the motherboard and install the cable that follows with the card between the motherboard and the loose socket.

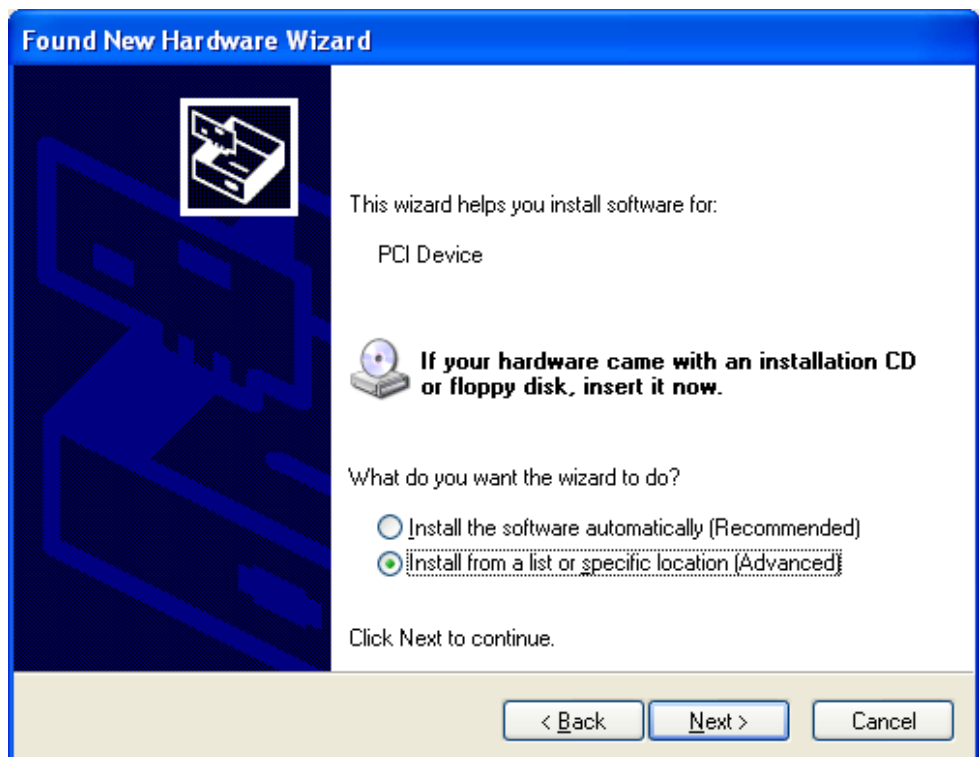
## Installation of Driver

In order to install the driver for the card please follow the instructions below.

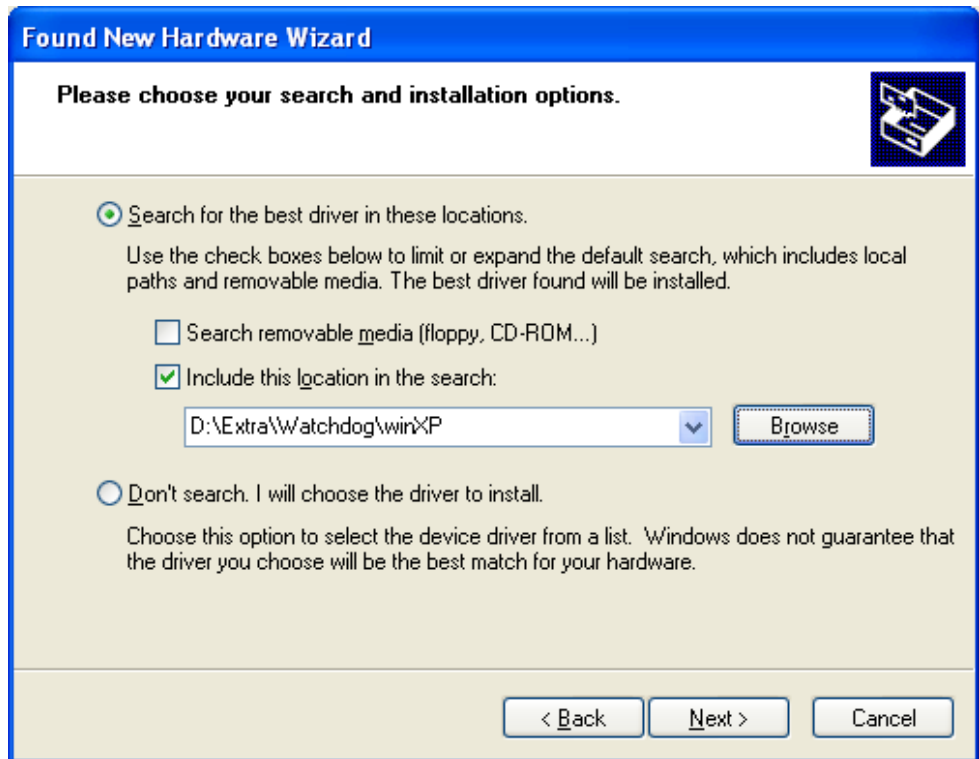
1. Start the computer. During the start-up, the operating system will recognize the card and ask for drivers. Select **No, not this time** and click on **Next**.



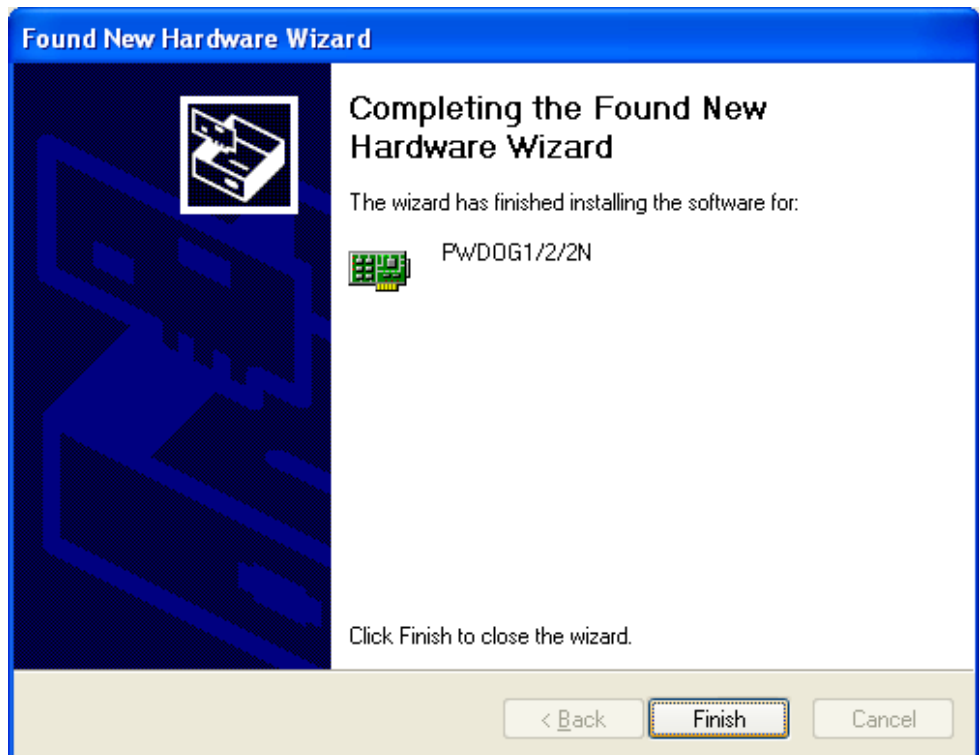
2. Select **Install from a list or specific location**, then click **Next**.



3. Insert the @ptitude Observer CD and select **Search for the best driver in these locations**. Select **Include this location in the search**, press the **Browse** button and select the folder [CD]:\Extra\Watchdog\Win2000 or [CD]:\Extra\Watchdog\winXP depending on the operating system. Press **Next** to continue.



4. Click on **Finish** to end the installation.



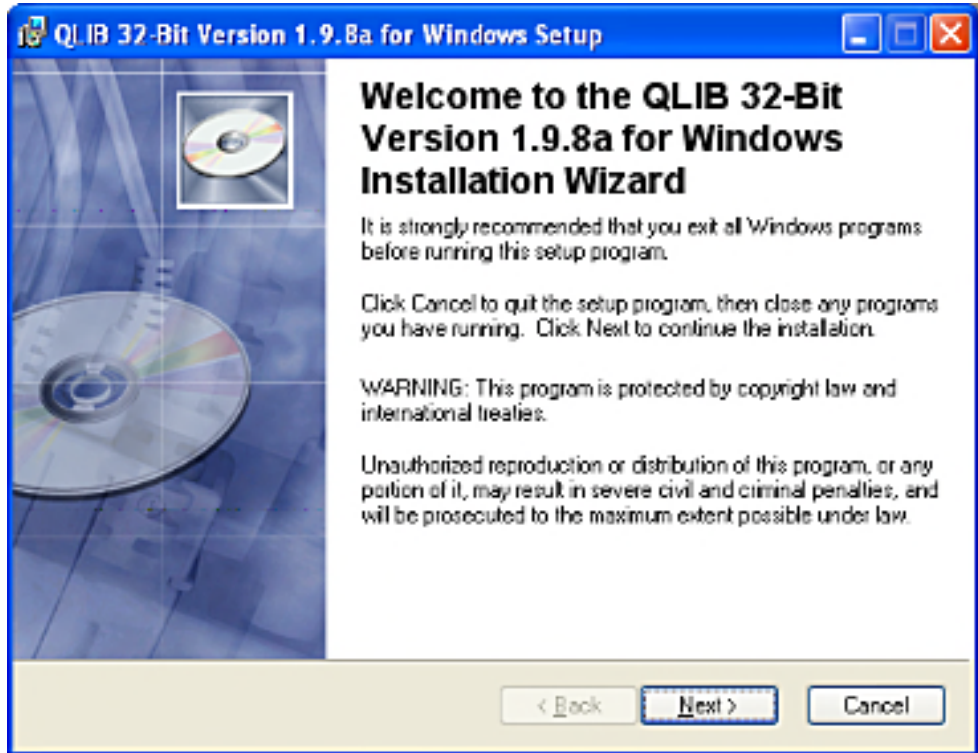
The software needs some additional components in order to handle the watchdog card. The installation of those software components is described in the next section

## Installation of Program Components

---

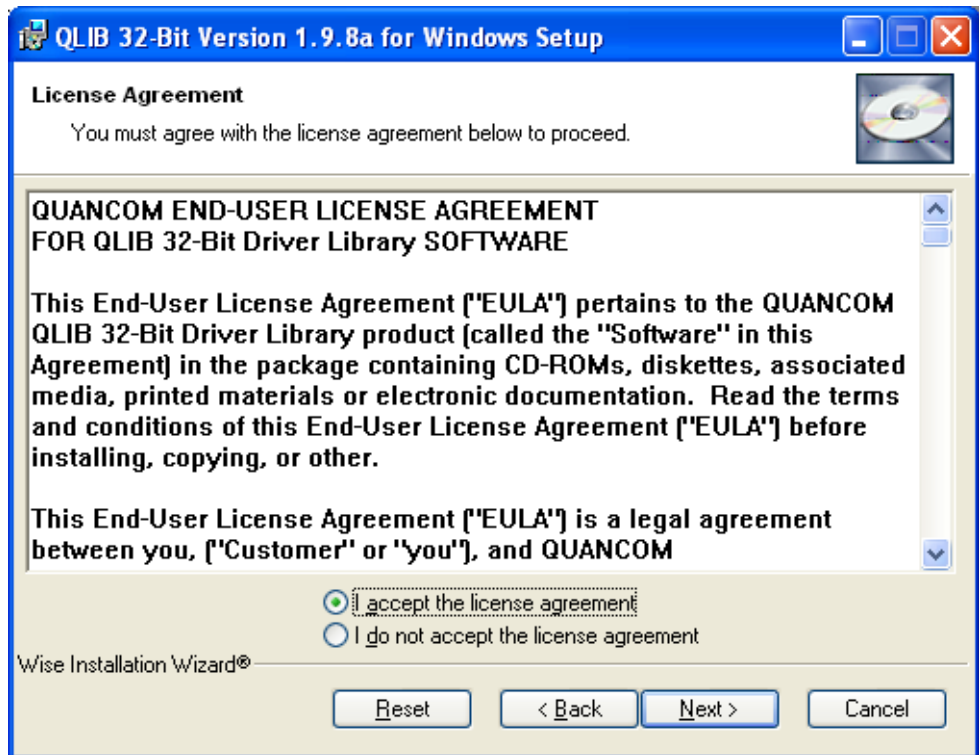
The software uses some components that need to be installed. Please follow the instructions below.

1. Select **Start-Run** and browse to the file [CD]:\Extra\Watchdog\ Qlib32.exe. The display below will be shown. Click on **Next** to continue the installation.

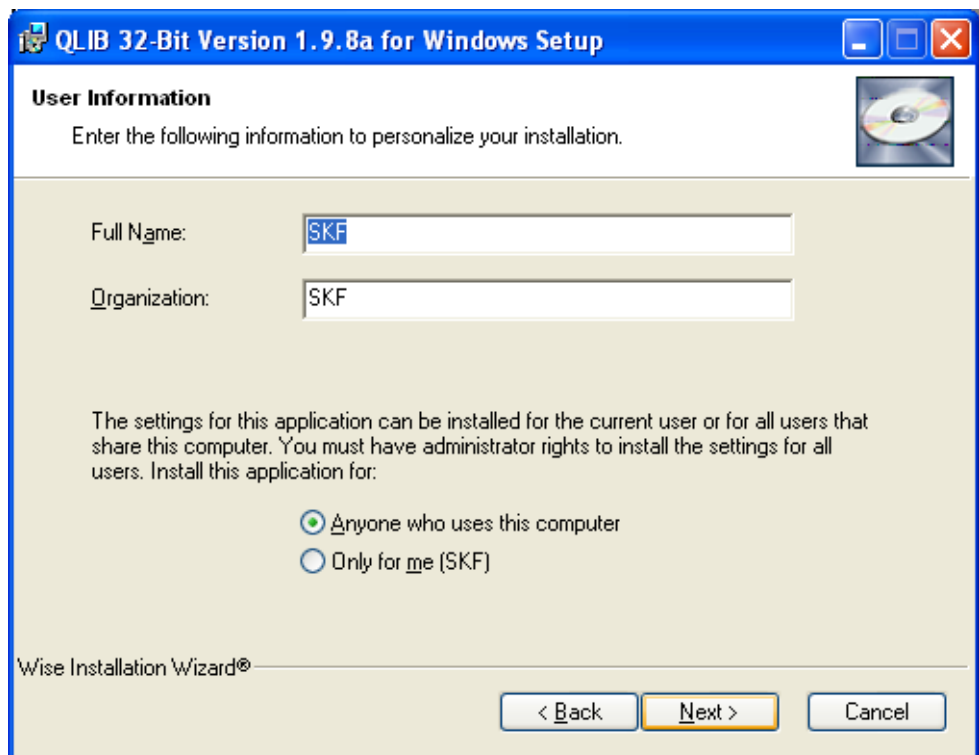




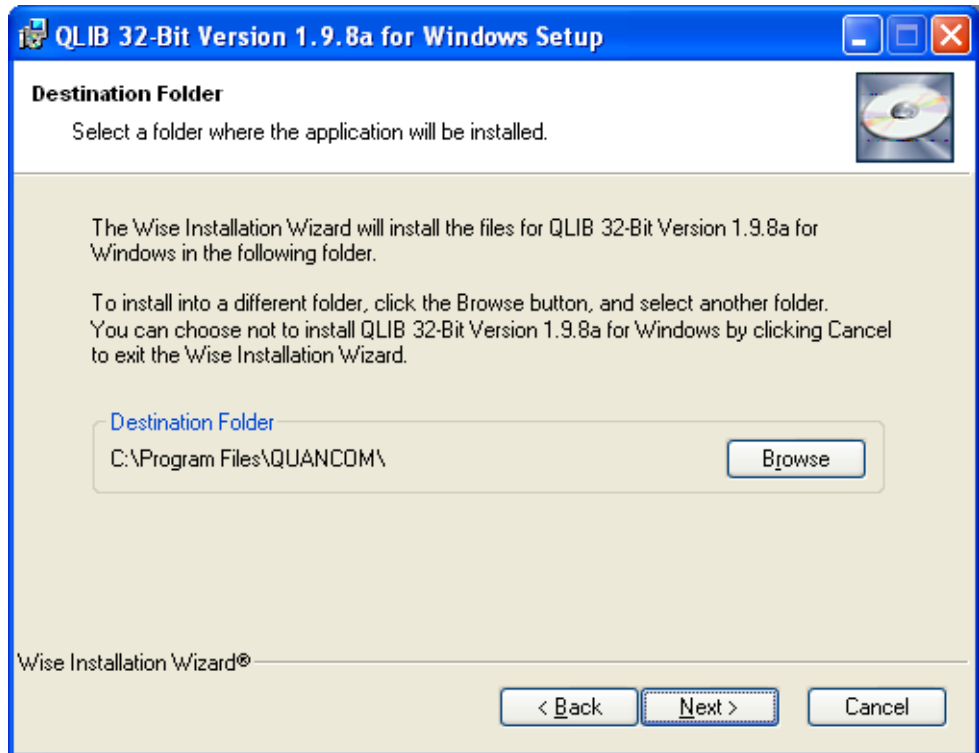
2. If you agree with the License Agreement then you select **I accept the license agreement**, then press **Next**.



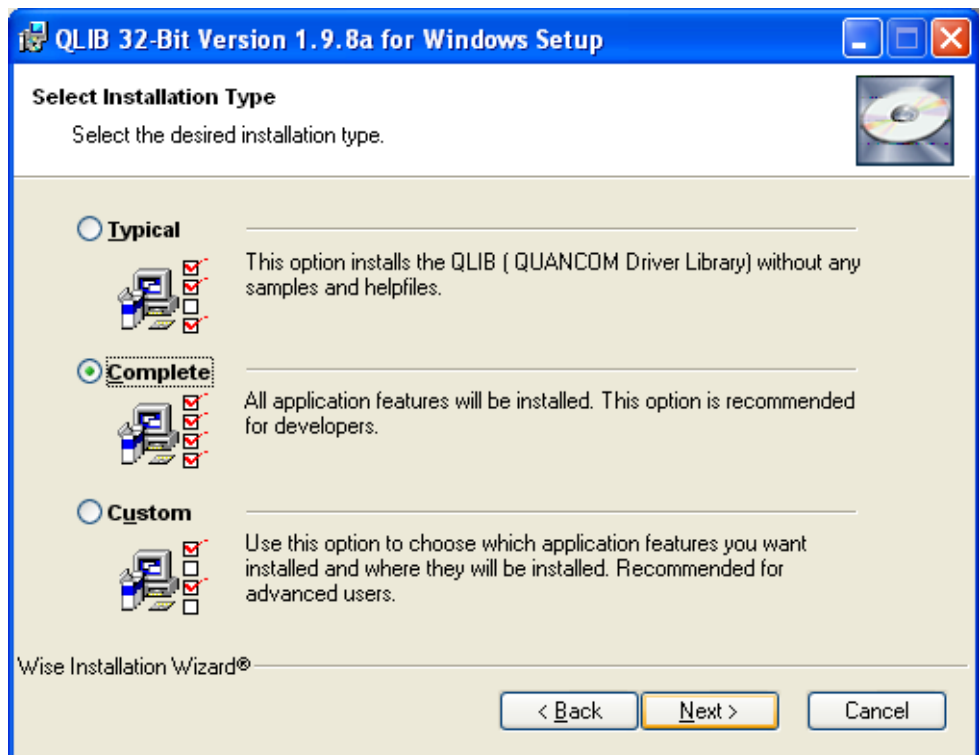
3. Enter **Full Name** and **Organization**. It is recommended to select **Anyone who uses this computer** and click **Next**.



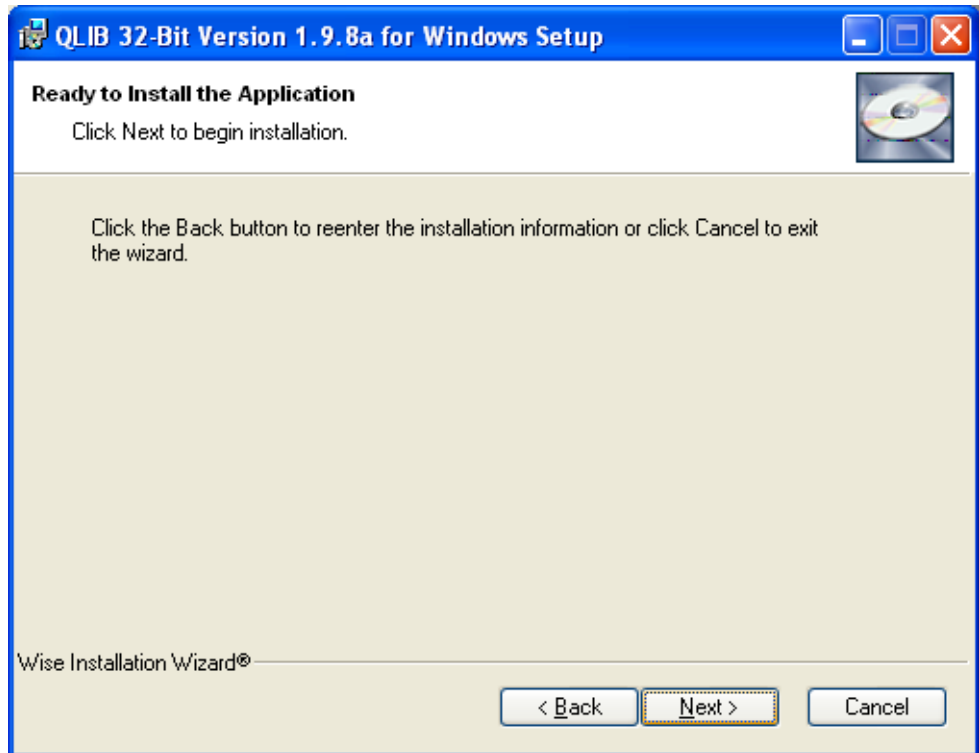
4. Select the **Destination Folder** you want to install and click **Next**.



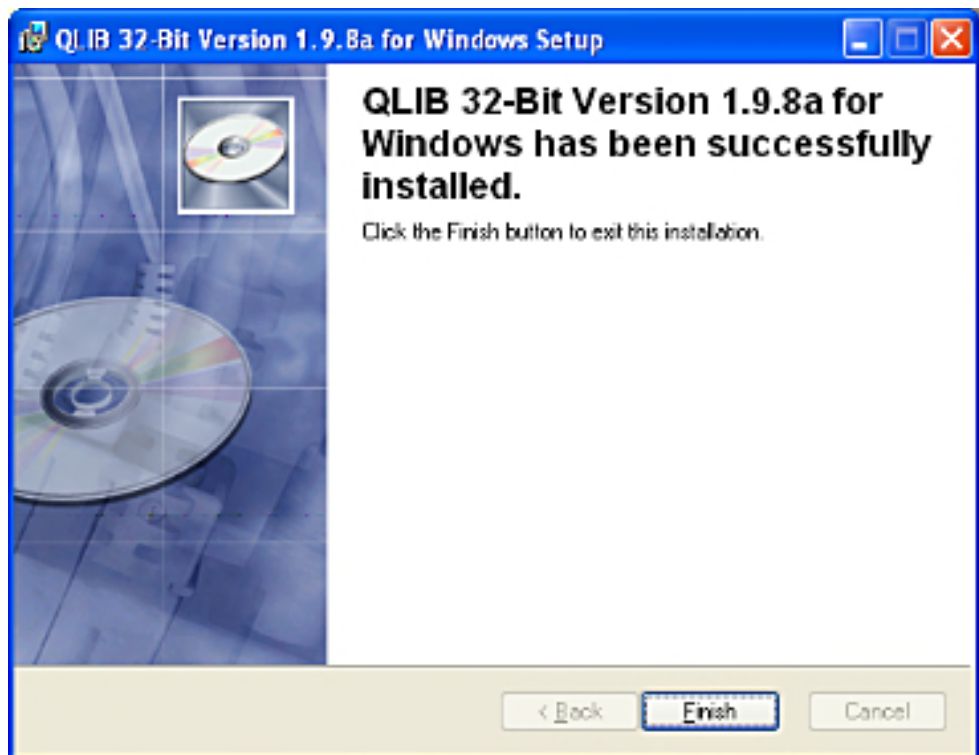
5. Select an installation type. We recommend **Complete**. Press **Next**.



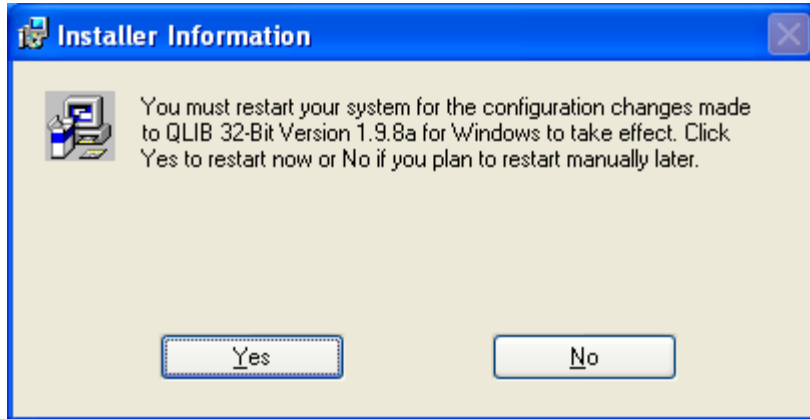
6. Now that all the settings are ok, the installation can continue. Press **Next**.



7. If the installation went well the following display is shown. Press **Finish**.



8. After the installation is completed the computer may need to be restarted.



In order to activate the Watchdog function in the software, a setting must be done in the ini-file called *monitor.ini* which is located in the same folder as *Monitor.exe* (normally located in *\Program Files\SKF\Observer\Observer.ini*). The setting should look like the following:

```
[System]
Watchdog=1
Reboot=1
```

The Reboot setting makes the software to restart if the software detects an error, for example if you should be disconnected from the network.

*Warning - When using a watchdog card the computer should be able to log on without user intervention.*